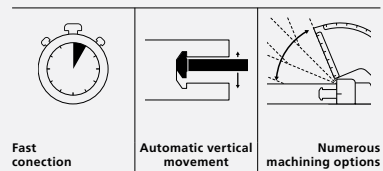


Zeta P2

The machine for the evolving P-System, saving you time daily! Differentiate your products from the standard!



Features



- Biscuit joiner for the production of the form-locking P-System groove
- Extremely fast, time-saving joining method
 - Cut. Connect. Done.
- Large range of connectors for different applications
- Same application advantages as the well-known Lamello system with wooden biscuits
- Precise furniture connections in all angle and connection situations

The Zeta P2 is the biscuit joiner for P-System connectors and is used to create the form-locking P-System groove within seconds. The integrated vertical mechanical drive is automatically triggered at the maximum cutting depth and performs a lateral cutter movement for the P-System groove. Connectors with various functions and different sizes can now be inserted into the form-locking P-System groove. The insertion into the groove is quick and without tools.

Articles



Art. No.

Zeta P2 biscuit joiner, HW, plug type F Schuko, in Systainer[®] M **101403DES**

Zeta P2 biscuit joiner, HW, plug type G, in Systainer[®] M **101403GBS**

Zeta P2 biscuit joiner, DP, plug type F Schuko, in Systainer[®] M **101403DESD**

Zeta P2 biscuit joiner, DP, plug type G, in Systainer[®] M **101403GBSD**

Kit contains: Zeta P2 biscuit joiner, DP, plug type C Euro, Clamex P drill jig incl. drill, adapter 36 mm, spacer 2 and 4 mm, set of tools, stop square

For other plug versions please contact your local Lamello specialist

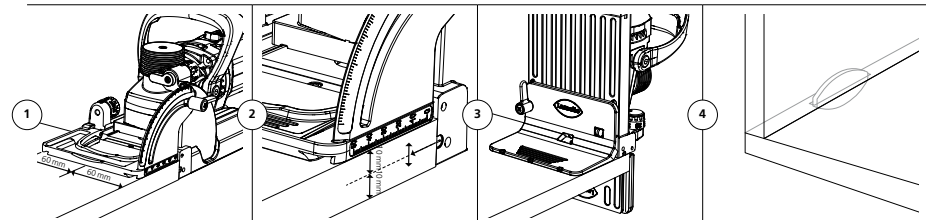


Also available as a set (see PAGE 68)

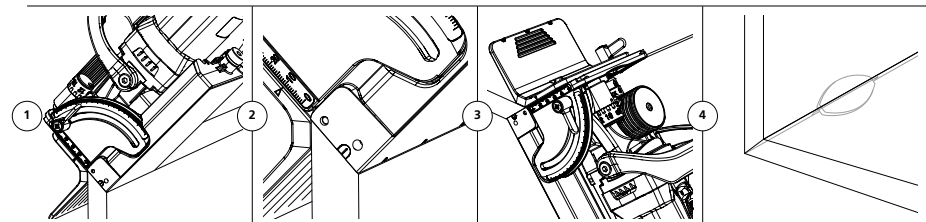
Matching accessories starting on PAGE 170

Function

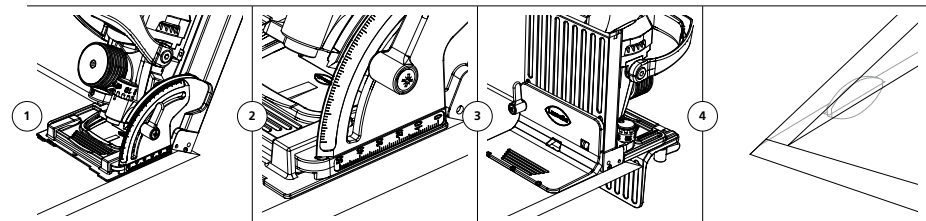
90° corner and dividing panel connection



Miter connection 45°–180° (struck from the outside)



Obtuse miter connection 22.5°–120°



Technical data

Power/Voltage	1 050 W/230 V 800 W/120 V	Teeth	Z3
Speed	9 000 min ⁻¹	Cutting depth max.	20 mm
P-System Cutter	HW: Ø 100.9 × 7 × Ø 22 mm DP: Ø 100.4 × 7 × Ø 22 mm	Weight	3.7 kg



P-SYSTEM



LAMELLO SYSTEM



DRILLING SYSTEM



NETWORKED PRODUCTION



ACCESSORIES

Zeta P2 Set

The perfect start to the P-System

Articles

The Zeta P2 Set is the comprehensive pack to get started with the P-System. It consists of three systainers that can be stacked compactly. The first systainer contains the Zeta P2 machine including accessories. The second systainer contains the Divario P-18 Starter Set and the third systainer contains the most common connectors, Clamex P-14 and Tenso P-14.

	Art. No.
Zeta P2 Set, DP, plug type F Schuko, in Systainer [®] M incl. connector assortment	101403DESET
Zeta P2 Set, DP, plug type G, in Systainer [®] M incl. connector assortment	101403GBSET

Scope of delivery 1st systainer:

1 pce Zeta P2 biscuit joiner, Clamex P drill jig incl. drill, adapter 36 mm, spacer 2 and 4 mm, set of tools, stop square

Scope of delivery 2nd systainer

1 pce Divario P-18 Starter Set in Systainer[®] M
Consisting of: 80 pairs Divario P-18, marking jig metal, installation tool, drill

Scope of delivery 3rd systainer:

1 pce P-System connector set in Systainer[®] M
Consisting of: 80 pairs Clamex P-14, 80 pairs Tenso P-14 incl. preload tool




Connected in seconds ...





Without waiting time, clamps, or secondary processes, glued and clamped in 40 seconds

Advantage

... with Clamex P – detachable

				Time for one connector pair
1 Cut	2 Drill	3 Insert	4 Connect – finished!	1. Cut 25 2. Drill 15 3. Insert 5 4. Connect – finished! 5
				Ready in 50 s

... with Tenso P – glued

				Time for one connector pair
1 Cut	2 Insert	3 Apply glue	4 Connect – finished!	1. Cut 25 2. Insert 5 3. Apply glue 5 4. Connect – finished! 5
				Ready in 40 s

