

Edge Banding Machine for Inclined Edge

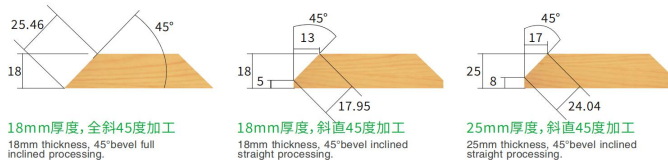
NB360 (NB5X)

Nanxing Machinery
Guangdong, China



Description

With the NB360 you can create on trend cabinets with a 'finger pull' profile design. This eliminates the need for additional hardware such as handles. Create angled or inclined edging with twin diamond cutters and twin glue station.



封边方向 →
Edge banding direction



Details

1. Machine body

- Heavy duty machine body is welded with thick laser-cut steel plates, then through processing of advanced CNC machine for metal work, hence enhance the stability and strength, reduce the vibration in the process; **very heavy duty**; 7700mm long.
- Frame body pass the **heat treatment** and **vibration aging treatment** to guarantees the whole service life without deforming.
- After **sandblasting** and **painting**, the top-grade CNC metal processing machines are used to process the body and components to make sure perfect quality and detail.



2. Professional assembly line

- Nanxing follow the SOP and set up the professional assembly lines. All the assembling is worked out by the experienced technicians that guarantee machine standardization and performance.



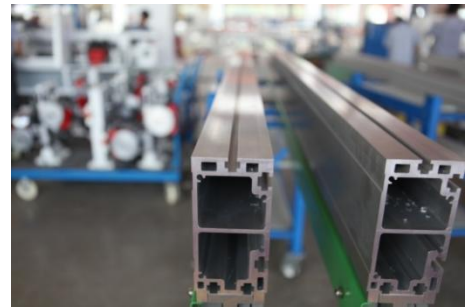
3. Quality control

- Advanced measuring equipment and strict QC system help to make sure the machines and parts are checked and certificated by very high standard.
- All the machines are delivered with Quality Certificate signed by QC specialist.



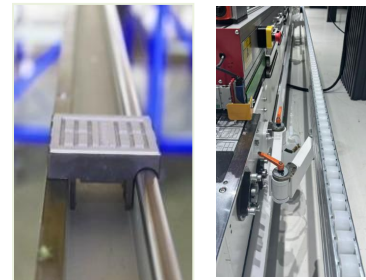
4. Top presser

- Aluminum pressure beam provides excellent stiffness and long service life.
- The height of presser beam adjusted automatically based on work piece's thickness just by inputting the work piece information on touch screen which saves a lot of time.
- Rubber rollers connected compactly in rows press work pieces tightly to make sure the work pieces could convey without displacement, wearproof.



5. Conveyor

- Long straight semicircle guide rail is through hard treatment before installation, conveyor piece can perfectly contact with the guide rail, almost no gap.
- Two steel rods of high rigidity connect the “stretched support conveyor” to the machine body to ensure the stable conveying of the wide work pieces. Max stretching width is 600mm.
- Long steel guiding plate of high thickness and rigidity for longer service life and position is easy to adjust.
- The conveyor motor makes variable frequency starting possible, very stable and equipped with braking system. And motor is fully covered by cover.



6. Release agent sprayer

- Spraying release agent on workpiece surface reduce the adhere of glue.



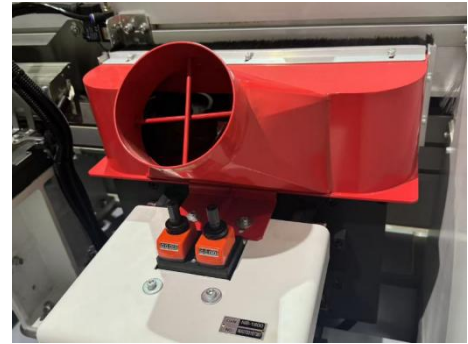
7. Bevel edge milling

- Two pieces of 4kw high-power motors, rotating speed 2800rpm, high rotating speed, low vibration and low noise; $\varphi 210 \times \varphi 25 \times H33 \times 12Z$ (45°)
- 45 degrees diamond forming bevel cutters offer higher rigidity, longer service life and stable performance to ensure perfect milling effect without cracks.
- Fully covered cover door, prevent possible influence caused by wood scraps.



8. Straight surface Pre-milling

- Pre-milling with 2 **Leitz diamond cutters** mill the work piece edge a little bit to ensure smooth edge before gluing for better edge banding result;
- Two motors controlled pneumatically, milling panel edge intermittent. 2× 3.7kW motors; 200Hz
Rotating speed: 12,000 rpm.
125×43×30 DKN8×3.3 Z3+3L
125×43×30 DKN8×3.3 Z3+3R



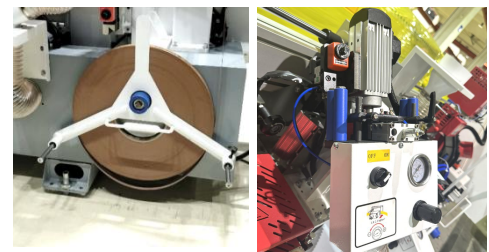
9. Pre-heating

- Warm the work piece edge, the glue could well melt during gluing, especially suitable for wet or cold zones.



10. Half bevel tape feed and edge tape grooving device

- Edge tape grooving to groove on thicker tape for better folding effect;
- The depth and position of the groove can be adjusted by the digital display band calibration knob, easy operation.
Motor power 0.37kw.



11. Bevel and straight gluing

- One straight edge gluing device for straight edge of half bevel edge banding work, and the other for 45 bevel edge.
- Glue is coated on the surface of workpiece edge, so glue line is smaller.



12. Edge tape pressing

- Edge tape could be pressed tightly by compact rollers, bevel rollers will get back while processing straight edge.



13. Hot air blowing gun (2pcs)

- Need to add hot air gun to warm edge tape if you use ABS this kind of fragile edge tape, but PVC is most suitable edge tape



14. Lubrication system

- Lubrication pump for daily maintenance, greasing work of guiding rail just by pulling the handle. Easy and save time.



15. End cutting

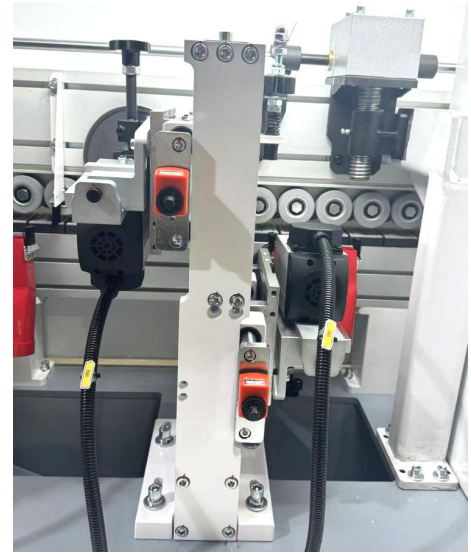
- Linear guide way structure at an angle of 45 degrees with 2 motors 0.35kw 200hz 12000rpm/min to remove the extra edge tape on front and back.
- High precision linear guides – for very high repeatability.
- 2pcs of saw blades ($\varphi 115 \times 3.0 \times \varphi 22 \times 24Z$) with independent cover.
- Dust collector



16. Rough Trimming unit

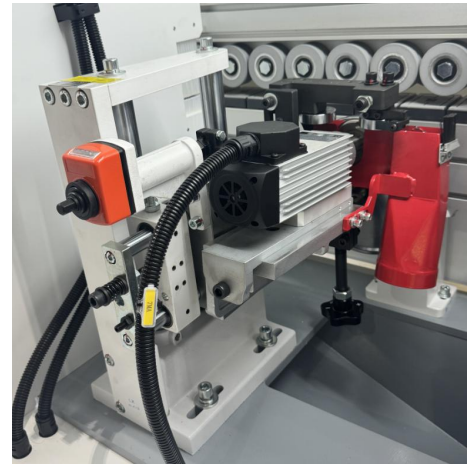
- Rough trimming unit with 2 powerful motors (power 0.75kw; frequency 200hz; rotating speed 1,200rpm/min)
- Pro-nesting copy tracing structure prevent damage on hinge hole

Cutter: 56×20×H14×4Z



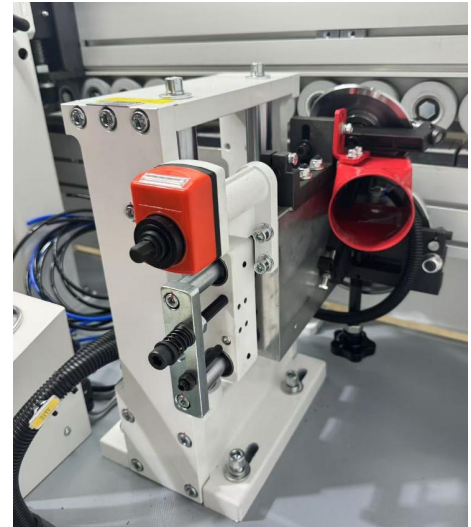
17. Bottom Fine trimming unit

- Bottom fine trimming unit with 1 powerful motors of world famous brand (power 0.55kw; frequency 200hz; rotating speed 1,200rpm/min), 1 milling cutters with two stiff steel positioning guides;
- Independent cover keeps scraps from flying, and guiding to machine bottom.
- Cutter: 70*16*H16*3Z R1.5



18. Bottom Profile scraping unit

- Equipped bottom scraping unit with R1.5 cutters (Standard)
- Tool: R1.5 30103.01836



19. Flat scraping

- Remove possible extra glue of top and bottom for better edge banding effect



20. Clean agent sprayer

- Spraying clean agent on workpiece surface to clean



21. Buffing

- Buffing by dual screen cloth structure is the last step to make perfect edge banding to make the edge shining, more stable.



22. Dust collection

- Independent suction hood ($\phi 125\text{mm}$) on processing units are fully covered ;



23. Remote switch and indicator light

- A remote switch enables the operator to stop or start the machine anytime during the process that provides the max. convenience to adjust or test the machine.
- Operation indicating light, the operation status of the machine is available at a glance.



24. Safety device

Feeding protector and thickness detection

- Protector prevents any possible accidents and ensures safety of operators, automatic monitoring abnormal operation.
- Work piece thickness detection, if work piece thickness over the limited position, conveyor will stop at once to reduce machine damage.

Interval feeding detection system

- Keep work pieces in proper distance for max edge banding performance.

E-STOP

- To stop running at once, guarantee operator life safety.



25. Cover door and dust collector

- Machine is fully covered and fits sound-absorbing cotton to reduce noise.



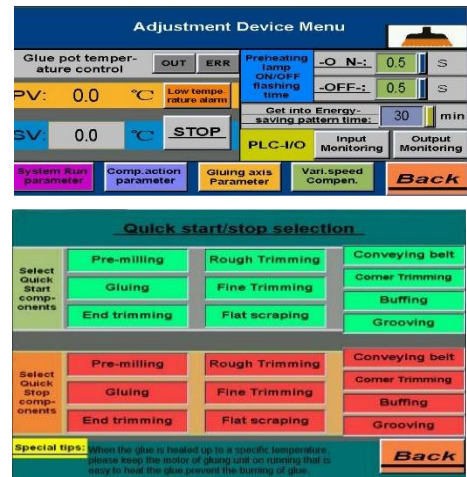
26. Control system

- 10" touch screen. Operation interface is intuitive and simple, available to control each component independently easy for testing and commission work.
- System languages: English, simplified Chinese, and traditional Chinese.



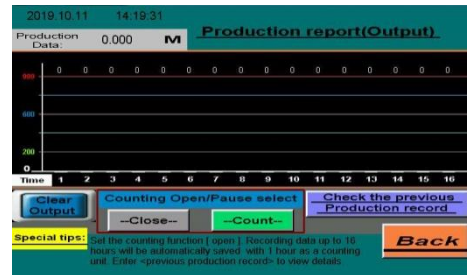
27. Energy saving

- Stand-by mode automatically turned on when machine stops working for a certain period (according to setting time) in order to save energy. Only one click to re-start production.
- One-click Selection, quick start/stop.



28. Production report

- Daily production included workpieces number and length is available at a glance



29. Electric equipment

- PLC control, input voltage 380v, 50Hz (Standard).
- Each processing unit is controlled and protected by independent frequency converter with motor braking function.
- Most of electric components of the machine adopted international brands for high quality and generality.
- Good documentation, each wire has a unique code label which offers max convenience for troubleshooting and online support.





Technical Data

Panel length:	≥150mm
Panel width:	≥120mm
Min. panel size:	150×120mm
Panel thickness:	18-25mm
Edge tape thickness:	0.6-2mm
Feeding speed:	14/16m/min
Dust collector	φ125mm×7
Total power:	33kw
Power supply:	415V/50Hz/3P
Overall dimension:	7700×1050×1650mm
Net weight:	3000kg

**Thanks for the attention!*

The company continuous to improve the product specifications and design details, the specifications are subject to change without notice. 250624