



## Edge Banding Machine for Narrow Edge

### NB660N (NB6JN)

Nanxing Machinery  
Guangdong China

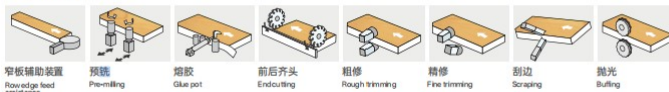
Min. workpiece width 30mm



### Description

Compact press rollers cooperate with additional assistance rollers in the front and in between make it possible to do narrow edge banding work.

封边方向 →  
Edge banding direction





### Details

#### 1. Machine body

- Heavy duty machine body is welded with thick laser-cut steel plates, then through processing of advanced CNC machine for metal work, hence enhance the stability and strength, reduce the vibration in the process; Machine net weight up to **very heavy duty**;
- Frame body pass the **heat treatment** and **vibration aging treatment** to guarantees the whole service life without deforming.
- After **sandblasting** and **painting**, the top-grade CNC metal processing machines are used to process the body and components to make sure perfect quality and detail.



#### 2. Professional assembly line

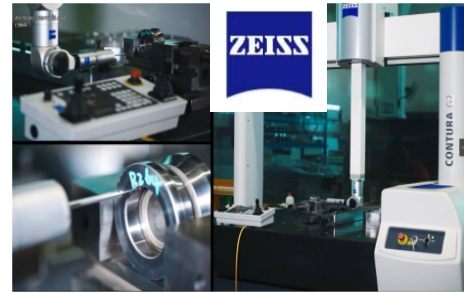
- Nanxing follow the SOP and set up the professional assembly lines. All the assembling is worked out by the experienced technicians that guarantee machine standardization and performance.





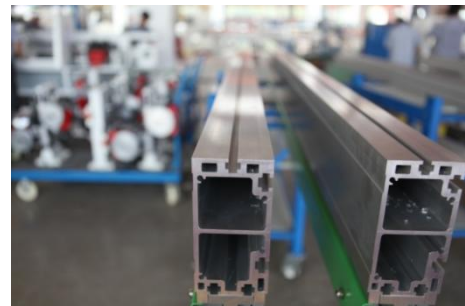
### 3. Quality control

- Advanced measuring equipment and strict QC system help to make sure the machines and parts are checked and certificated by very high standard.
- All the machines are delivered with Quality Certificate signed by QC specialist.
- 



### 4. Top presser

- Aluminum pressure beam provides excellent stiffness and long service life.
- The height of presser beam adjusted automatically based on work piece's thickness just by inputting the work piece information on touch screen which saves a lot of time.
- Smaller rubber rollers connected compactly in 2 rows press work pieces plus inner side small roller assistance to ensure smooth conveying of narrow workpieces.
- Main processing units such as pre-milling, fine trimming and scraping units are specially configured additional rollers outside.



## 5. Conveyor

- Long straight semicircle guide rail is through hard treatment before installation, conveyor piece can perfectly contact with the guide rail, almost no gap.
- Two steel rods of high rigidity connect the “stretched support conveyor” to the machine body to ensure the stable conveying of the wide work pieces. Max stretching width is 600mm.
- Long steel guiding plate of high thickness and rigidity for longer service life. Position is easy to adjust.
- The conveyor motor makes variable frequency starting possible, very stable and equipped with braking system. Easy to install or uninstall. With cover.



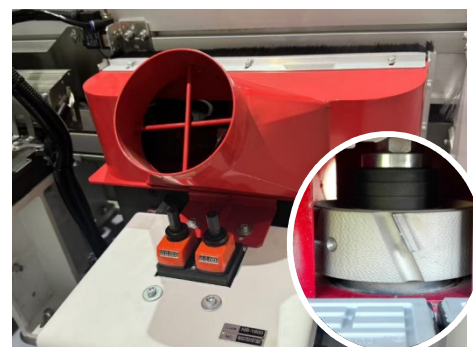
## 6. Narrow part feeding package

- Narrow part feeding package with sliding device, make sure the narrow edge with min. 40mm short end are fed properly.



## 7. Pre-milling

- Pre-milling with 2 **diamond cutters**
- Two motors controlled pneumatically, milling panel edge intermittent. 2×3.7kW motors; Rotating speed: 12,000 rpm.





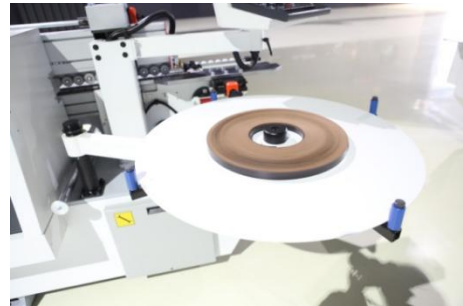
### 8. Pre-heating

- Warm the work piece edge, the glue could well melt during gluing, especially suitable for wet or cold zones.



### 9. Coil tape bracket

- Big edge tape bracket is in proper height for smooth edge tape feeding and longer service life. Machine screen will appear alarm when edge tape is used up. Save waiting time.



### 10. Tape Snipping

- Snipping air cylinder with electric controlled switch to cut the edge tape properly.





### 11. Two-color no-cleaning PUR glue pot+Double barrel gluing machine

- Excellent gluing/heating effect; 2 colours of glue can be switched automatically.
- PUR glue mainly relies on moisture curing, not easily affected by temperature leading to cracking.
- PUR glue heated and air moisture reaction curing, irreversible, again heating will not melt, strong stability.
- PUR glue machine:20KG\*2



### 12. Pressure rollers

- One pre-pressure roller of 100mm diameter coordinates well with four post rollers make edge tape pressed on edge surface firmly.
- First and second roller is equipped with glue scraper to remove excessive glue stuck on rollers;



### 13. Lubrication system

- Lubrication pump for daily maintenance, greasing work of guiding rail just by pulling the handle. Easy and save time.





### 14. End cutting

- Linear guide way structure at an angle of 45 degrees with 2 motors 0.35kw 200hz 12000rpm/min to remove the extra edge tape on front and back.
- High precision linear guides – for very high repeatability.
- 2pcs of saw blades ( $\varphi 104 \times 3 \times 30T \times 22AB$ ) with independent cover.
- Dust collector



### 15. Rough Trimming

- Each set with 2 motors (power: 0.75kw; rotating speed: 12000rpm/min)
- Tool Dimension:  $56 \times 20 \times H14 \times 4Z$



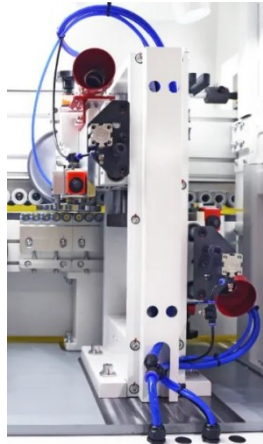
### 16. Fine trimming unit

- Each set with 2 motors (power: 0.55kw; rotating speed: 12000rpm/min).
- One set of fine trimming milling cutters move backwards by cylinder if changing to the other tape thickness, set-up time tends to zero.
- Tool Dimension:  $6T \times \varphi 69 \times H13 \times \varphi 16 R1.5$



### 17. Scraping units

- It is used to eliminate the ripple marks caused by the cutting process of trimming non-linear motion, and to make the upper and lower parts of the plate smoother and neater
- Tool Profile R1.5



### 18. Buffing units

- Buffing by dual screen cloth structure is the last step to make perfect edge banding to make the edge shining, more stable.



### 19. Safety device

#### Feeding protector and thickness detection

- Protector prevents any possible accidents and ensures safety of operators, automatic monitoring abnormal operation.
- Work piece thickness detection, if work piece thickness over the limited position, conveyor will stop at once to reduce machine damage.

#### Interval feeding detection system

- Keep work pieces in proper distance for max edge banding performance.

#### E-STOP

- To stop running at once, guarantee operator life safety.



## 20. Cover door and dust collector

- Machine is fully covered and fits sound-absorbing cotton to reduce noise.



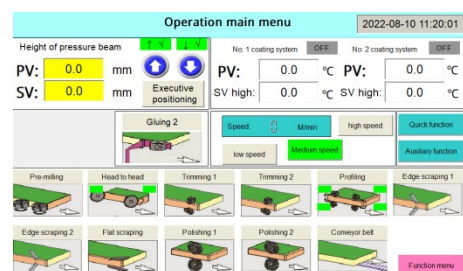
## 21. Control system

- 10" touch screen. Operation interface is intuitive and simple, available to control each component independently easy for testing and commission work.
- System languages: English, simplified Chinese, and traditional Chinese.



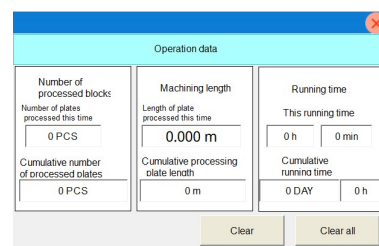
## 22. Operation interface

- Stand-by mode automatically turned on when machine stops working for a certain period (according to setting time) in order to save energy. Only one click to re-start production.
- One-click Selection, quick start/stop.



## 23. Production report

- Daily production included workpieces number and length is available at a glance



## 24. Electric equipment

- PLC control, input voltage 380v, 50Hz (Standard).
- The position can be calculated precisely by encoder
- Each processing unit is controlled and protected by independent frequency converter with motor braking function.
- Most of electric components of the machine adopted international brands for high quality and generality.
- Good documentation, each wire has a unique code label which offers max convenience for troubleshooting and online support.





## 25. Narrow workpiece solution

- 120×120mm (four sides)
- 200×30mm (long edge)
- 200×40mm (short edge)





### Technical Data

---

<b>Model</b>	NB660N (NB6JN)
<b>Panel length</b>	$\geq 120\text{mm}$
<b>Panel width</b>	$\geq 30\text{mm}$
<b>Mini panel thickness</b>	120×120mm (four sides) 200×30mm (long edge) 200×40mm (short edge)
<b>Panel thickness (narrow edge with Corner rounding on)</b>	$\leq 25\text{mm}$
<b>Panel thickness</b>	9-60mm
<b>Edge tape thickness</b>	0.4-3mm
<b>Feed speed</b>	16/20/24m/min
<b>Dust extraction</b>	$\phi 125\text{mm} \times 4$
<b>Total power</b>	22.5kw
<b>Overall dimension</b>	6600×1050×1650mm
<b>Net weight</b>	2230kg (not including the option)

*\*Thanks for the attention!*

*The company continuous to improve the product specifications and design details, the specifications are subject to change without notice. 25-7-24*