

## Edge Banding Machine NB7CJ

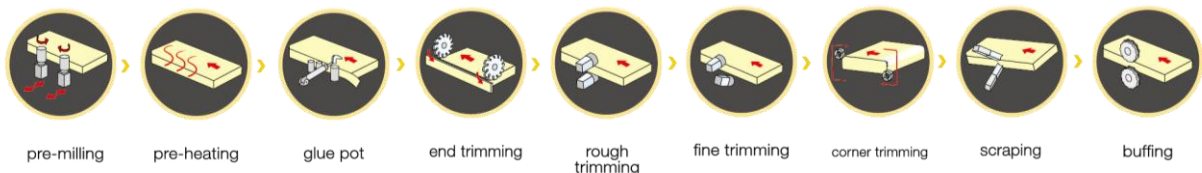
(with pre-melter)



### Description

- Heavy duty machine body and most mechanical machine parts are proceeded by advanced CNC machines for higher stability and longer service life without deforming;
- Pre-melter gluing system
- Merges numerous functions in one machine, including pre-milling, pre-heating, pre-melter gluing system, snipping, end trimming, rough trimming, fine trimming, corner trimming, scraping, spraying and buffing, edge banding work can be done in one process.
- Automatic standby, one-button wake-up device and energy saving;
- Most electric components are in world famous brands.
- Customer Reference: **30+** countries; **2000+** machines

Edge banding direction



## Details

---

### 1. Machine body

- Heavy duty machine body is welded with thick laser-cut steel plates, then through processing of advanced CNC machine for metal work, hence enhance the stability and strength, reduce the vibration in the process; Machine net weight up to **3670kg- very heavy duty**;
- Frame body pass the **heat treatment** and **vibration aging treatment** to guarantees the whole service life without deforming.
- After **sandblasting** and **painting**, the top-grade CNC metal processing machines are used to process the body and components to make sure perfect quality and detail.



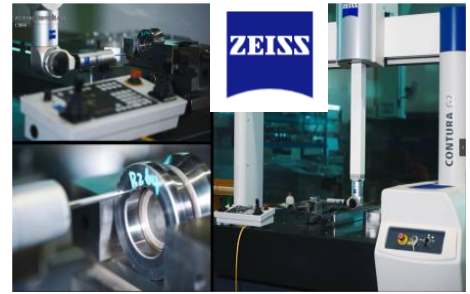
### 2. Professional assembly line

- Nanxing follow the SOP and set up the professional assembly lines. All the assembling is worked out by the experienced technicians that guarantee machine standardization and performance.



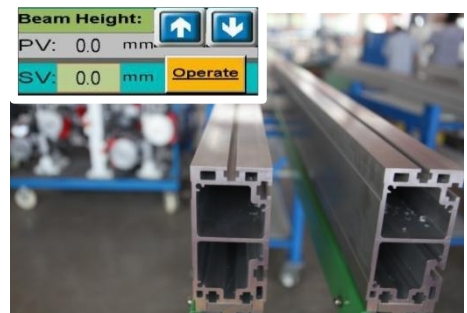
### 3. Quality control

- Advanced measuring equipment and strict QC system help to make sure the machines and parts are checked and certificated by very high standard.
- All the machines are delivered with Quality Certificate signed by QC specialist.



### 4. Top presser

- Aluminum pressure beam provides excellent stiffness and long service life.
- The height of presser beam adjusted automatically based on work piece's thickness just by inputting the work piece information on touch screen which saves a lot of time.
- Rubber rollers connected compactly in rows press work pieces tightly to make sure the work pieces could convey without displacement, wearproof.



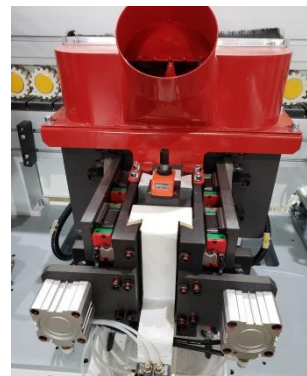
## 5. Conveyor

- Long straight semicircle guide rail is through hard treatment before installation, conveyor piece can perfectly contact with the guide rail, almost no gap.
- Two steel rods of high rigidity connect the “stretched support conveyor” to the machine body to ensure the stable conveying of the wide work pieces. Max stretching width is 600mm.
- Long steel guiding plate of high thickness and rigidity for longer service life. Position is easy to adjust.
- The conveyor motor makes variable frequency starting possible, very stable and equipped with braking system. Easy to install or uninstall.



## 6. Pre-milling

- Pre-milling with **diamond cutter**  $\varnothing 125 \times H43 \times \varnothing 30$  Z3+3 simply handles the work piece edge before gluing offers optimum basis of binding effect.
- Two motors controlled pneumatically, milling panel edge intermittent.  $2 \times 3.7\text{kW}$  motors; 200Hz  
Rotating speed: 12,000 rpm.
- Fully covered dust cover.



## 7. Spraying device (release+ cleaning agent)

Spraying release agent on workpiece surface reduce the adhere of glue, then spray clean agent before buffing thus reduce possible glue line effectively. You would need clean by hand if without this function



## 8. Pre-heating

- Warm the work piece edge, the glue could well melt during gluing, especially suitable for wet or cold zones.



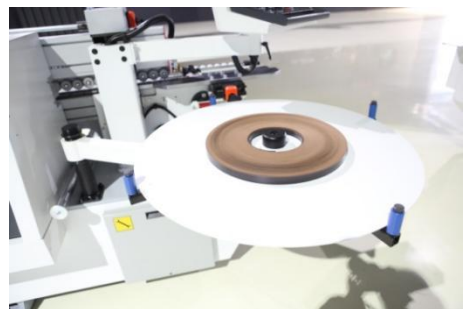
## 9. Pre-melter gluing system

- Pre-melt gluing system has a glue tank on top to offer proper glue volume according to processing, save heating-up time, and a small glue pot on bottom, thus reducing the carbonization and vulcanization from burning up of glue resins, keep glue always fresh.
- Liquid level sensor detection device controls the glue amount accurately so as to prevent overflow.
- Just one screw to release and install glue pot, 60mm high gluing roller, more glue supplying suitable for mass production, long parts.
- Sliding seat, easy to switch between pre-melter and PUR device. (PUR device is option)



## 10. Coil tape feeder

- Edge tape supporter of high quality is in proper height for smooth edge tape feeding and longer service life. Machine screen will appear alarm when edge tape is used up. Save waiting time.



## 11. Snipping

- Snipping air cylinder with electric controlled switch to cut the edge tape properly.



### 12. Pressure rollers

- One pre-pressure roller of 100mm diameter coordinates well with four post rollers make edge tape pressed on edge surface firmly.



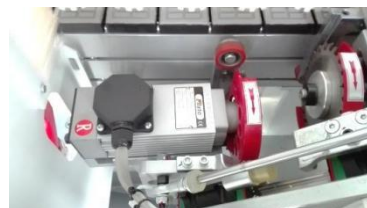
### 13. Lubrication oil pump

- Lubrication pump for daily maintenance, greasing work of guiding rail just by pulling the handle. Easy and save time.



### 14. End trimming

- Linear guide way structure at an angle of 45 degrees with 2 motors 0.35kw 200hz 12000rpm/min to remove the extra edge tape on front and back.  
High precision linear guides – for very high repeatability.
- With dust collection on top
- 2pcs of saw blades (105\*3\*22\*24Z) with independent cover.



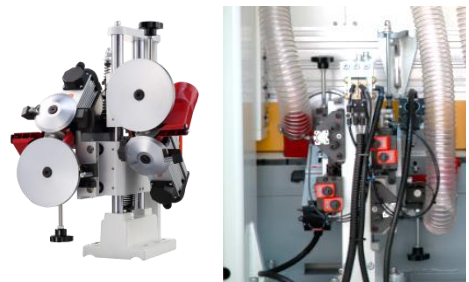
### 15. Rough trimming

- Rough trimming unit with 2 powerful motors of world famous brand (power 0.75kw; frequency 200hz; rotating speed 1,2000rpm/min), 2 milling cutters with two stiff steel positioning guides;
- Independent cover keeps scraps from flying, and guiding to machine bottom.



### 16. Fine trimming with pneumatic auto tools adjustment

- 2 motors (power: 0.55kw; frequency: 200hz, rotating speed: 12000rpm/min). 2 fine trimming milling cutters (Standard: R1.5);
- 2 position tool adjusting, just one click to switch between thin edge to thick edge which saves time of adjusting.
- Guiding board with high stiffness and independent cover on cutters for longer service life.



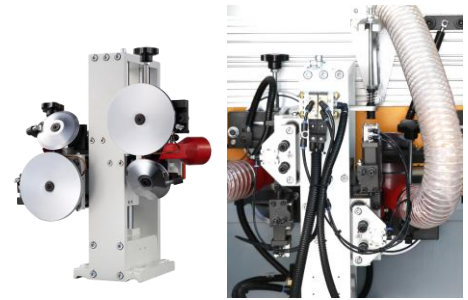
### 17. Corner trimming unit

- Designed to trim sharp corner on front, back and two straight edges so as to achieve R circular arc radius.
- Driven by 2 motors (power: 0.3kw; frequency: 200 Hz, rotating speed: 12000rpm/min).
- Planar linkage with 2 corner trimming tools R1.5 3Z
- Rotating angle is adjusted automatic with an electric sensor, heavy duty designed.



### 18. Scraping unit with 2 position pneumatic auto adjustment.

- Scraping the edge by R1.5 cutters (Standard), making edge banding more beautiful.
- 2 position tool adjusting, just one click to switch between thin edge to thick edge which saves time of adjusting.



### 19. Buffing

- Buffing by dual screen cloth structure is the last step to make perfect edge banding to make the edge shining, more stable.



### 20. Safety device

#### Feeding protector and thickness detection

- Protector prevents any possible accidents and ensures safety of operators, automatic monitoring abnormal operation.
- Work piece thickness detection, if work piece thickness over the limited position, conveyor will stop at once to reduce machine damage.



#### Interval feeding detection system

- Keep work pieces in proper distance for max edge banding performance.



#### E-STOP

- To stop running at once, guarantee operator life safety.



## 21. Dust collection

- Independent suction hood ( $\varphi 125\text{mm}$ ) on processing units are fully covered: Pre-milling\*1; End cutting\*1; Rough trimming \*1; Fine trimming \*1; Scraping \*1, totally 5 sets.



## 22. Remote switch & Indicator light

- A switch enables the operator to stop or start the machine anytime during the process that provides the max. convenience to adjust or test the machine.
- Indicator light, the operation status of the machine is available at a glance.



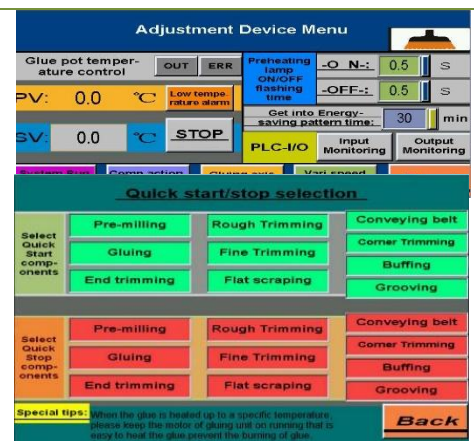
## 23. Control system

- 10" touch screen. Operation interface is intuitive and simple, available to control each component independently easy for testing and commission work.
- System languages: English, simplified Chinese, and traditional Chinese.



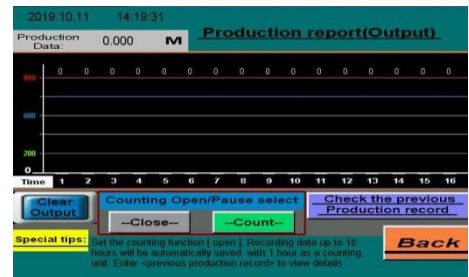
## 24. Energy saving

- Stand-by mode automatically turned on when machine stops working for a certain period (according to setting time) in order to save energy. Only one click to re-start production.
- One-click Selection, quick start/stop.



## 25. Production report

- Daily production included workpieces number and length is available at a glance



## 26. Electric equipment

- PLC control, input voltage 380v, 50Hz (Standard).
- The position can be calculated precisely by encoder
- Each processing unit is controlled and protected by independent frequency converter with motor braking function.
- Most of electric components of the machine adopted international brands for high quality and generality.
- Good documentation, each wire has a unique code label which offers max convenience for troubleshooting and online support.



## Technical Data

---

<b>Panel length:</b>	≥120 mm
<b>Panel width:</b>	≥80 mm
<b>Mini. Panel size:</b>	120×80mm
<b>Panel thickness:</b>	10-60 mm
<b>Edge tape thickness:</b>	0.4-3 mm
<b>Feeding speed:</b>	16/20/24 m/min
<b>Power supply:</b>	415 V; 50 Hz
<b>Air pressure required:</b>	0.7MPa
<b>Operation system</b>	10" touch screen
<b>Dust collector</b>	Φ125mm×5
<b>Total power:</b>	24 Kw
<b>Approx. weight:</b>	3,670 kg
<b>Overall dimension:</b>	7,700*1,450*1,650 mm

*\*Thanks for the attention!*

*The company continuous to improve the product specifications and design details, the specifications are subject to change without notice. 240427*