

Manual Edge Banding Machine MF50S

Nanxing Machinery
Guangdong China



Description

- Friendly for curved and straight edge banding
 - Teflon coated glue pot is easy to clean and with temperature control
 - Steel table plate of high stiffness and flatness, long service life
-

Details

1. Machine body

- Professional CNC metal processing machines are used to process the body and components to make sure perfect quality and detail.
- More than 20 years experience ensures stability and performance



2. Table plate

- Thick Steel table plate of high flatness and longer service life, avoid scrap on board's surface
- Front table is 45 degree adjustable is designed for inclined edge banding.



3. Table presser

- Tape presser rollers are movable to suit different shape edge..



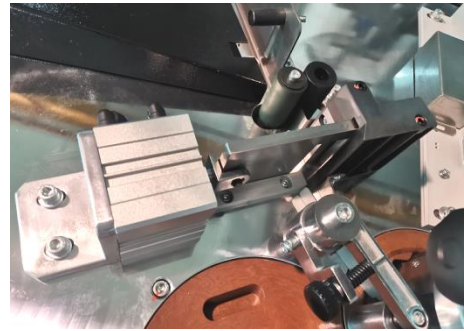
4. 2 gluing rollers

- 2 gluing rollers are designed for straight edge and free-shaped edge



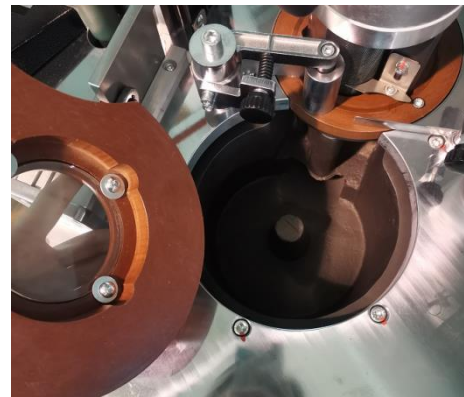
5. Tape cut

- Cut tape after stepping on foot pedal switch



6. Glue pot

- Teflon coated glue pot of larger capacity
- The glue pot cover is adiabatic and with glass to watch remained glue volume;



Technical Data

Edge Tape Width	10-50mm
Edge Tape Thickness	0.3-3mm
Minimum radius of surface	20mm
Feeding Speed	1-18m/min
Heating Power	2.2kw
Motor power	0.2kw
Total power	2.5 kW
Overall dimension	1800 *1120*1150mm
Net weight	310kg

**Thanks for the attention!*

The company continuous to improve the product specifications and design details, the specifications are subject to change without notice. 220712

Additional Information

- Machine voltage / Frequency : 380V / 50Hz
- Total Power kW : 2.5
- Total Power HP : 3.5
- Req. Stabilizer : 10 KVA
- Stabilizer Range : 3PH 360 to 460
- MCB AMP : 10
- Cable size in sqmm x core : 2.5x5
- Pn. Pressure / CFM : 2cfm
- Dust Succession CMH :
- Succession Velocity m/sec :
- DC Port Size :
- Hose Pipe Dia mm :
- Package Dimensions - 01 : 100x1120x1150