

Lamello



Drilling System



Unique drilling systems for high demands on productivity and aesthetics



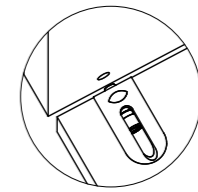
Drilling System

Unique drilling systems for high demands on productivity and aesthetics

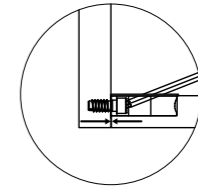
Drilling System – Cabineo, Invis Mx2 – Overview	4–5
Cabineo 12 – Time-saving cabinet connector for corner joints from 13 mm	8–9
Cabineo 8 – Time-saving cabinet connector for centre panels from 16 mm	10–11
Cabineo 8 M6 – Wear-resistant cabinet connector for various materials and increased strength	12–13
Cabineo insert M6 – For repeated assembly and disassembly without loss of strength	14–15
Application examples – Cabineo	16–17
Advantages of Cabineo – Simple, fast and strong	18
Cabineo compared with cam and dowel	19
Examples of manufacturing and assembly processes – Cabineo	20–21
Cabineo with CNC – Specific equipment options for CNC machines for Cabineo	22–23
CNC tools – For Cabineo	24
Accessories/Spare Parts – Cabineo	26–27
Technical information – Cabineo	28–29
Invis Mx2 – Magnet-driven connecting fittings	32–35
Rasto drill jig – Universal drill jig without measuring or marking	36–37
Application examples – Invis Mx2	38–39
Accessories/Spare Parts – Invis Mx2/Rasto	40–41
Technical information – Invis Mx2	42–43
We are here for you!	44–45
Overview of connectors	46–47
Disclaimer regarding load limits	47



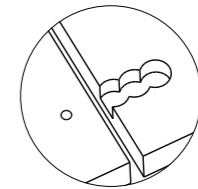
Features Cabineo



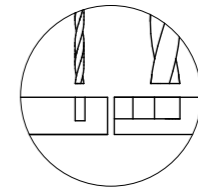
Fast assembly



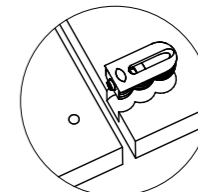
High clamping force



No edge drilling

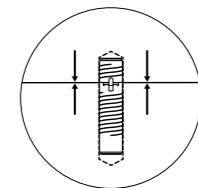


No dowel holes

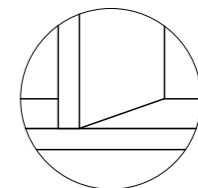


One-piece and pre-installed

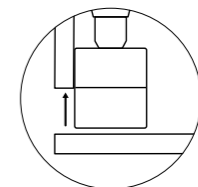
Features Invis Mx2



High clamping force



Invisible

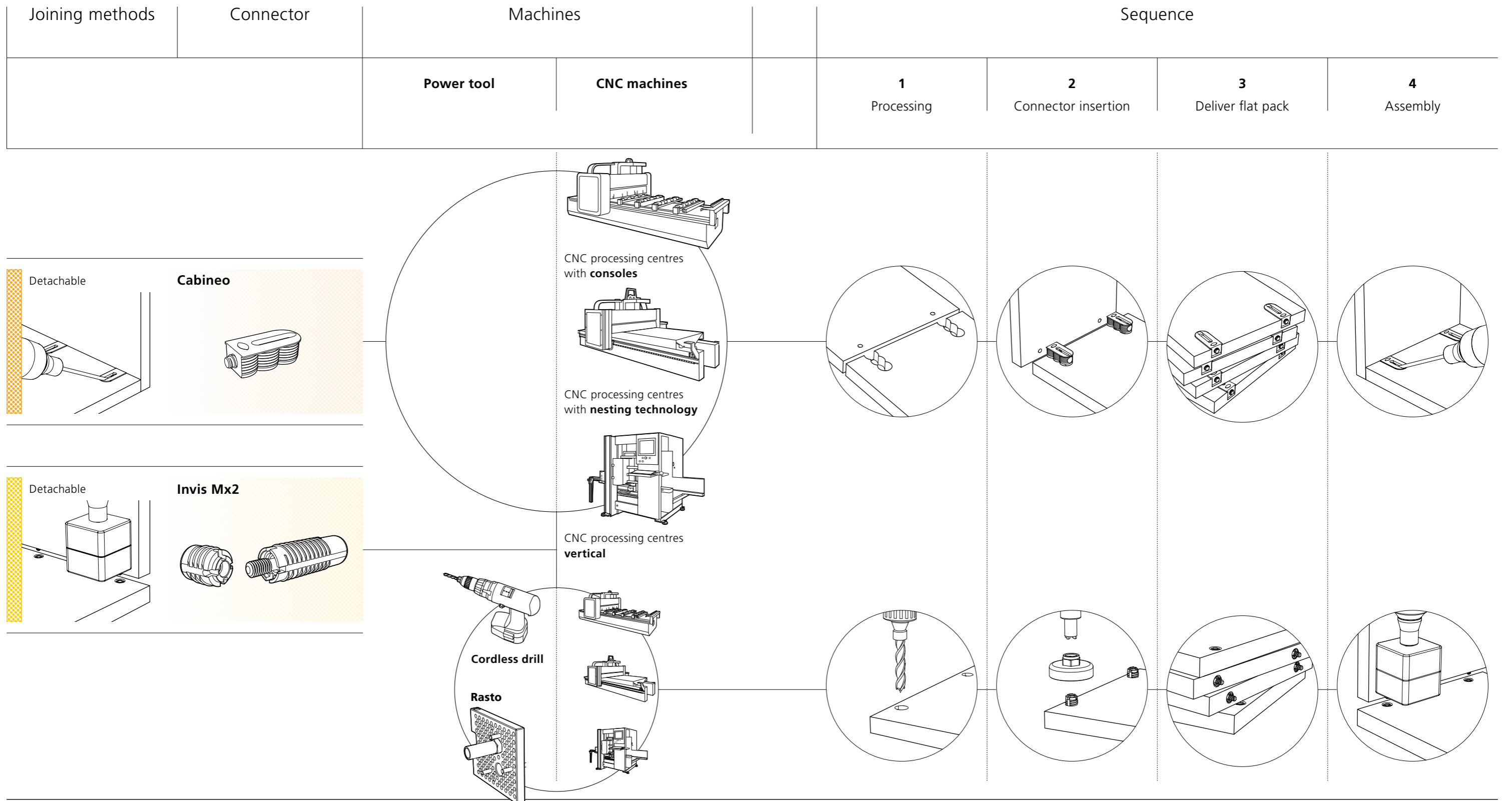


Detachable

Drilling System

- Cabineo
- Invis Mx2

Overview



« With the protruding screw the workpieces are perfectly aligned. Then we simply join them with a cordless drill. »

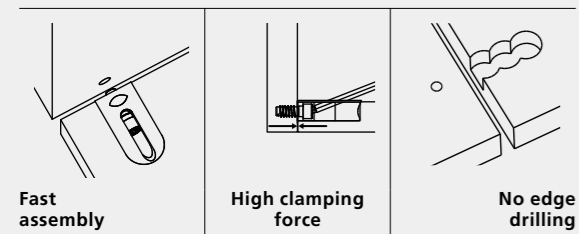
Objekteinrichtung Hengelhaupt GmbH and Greve Innenausbau GmbH,
Monteur Denny Wollmann, Grevesmühlen, Germany

Cabineo 12

Time-saving cabinet connector for corner joints from 13 mm



Features



Cabineo 12 is a one-piece cabinet connector which can be used with all CNC machines because only surface machining is required. The Cabineo is installed in the board either in the workshop or on site. The pre-assembled screw in the connector is screwed into the 5 mm hole of the second workpiece using a cordless drill. Cabineo impresses with its time-saving processing and assembly as well as the high clamping force which leads to stable connections without the need for additional dowels. Cabineo is available in white or black.

Articles



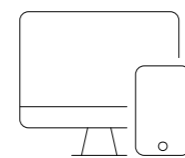
Cabineo 12	Art. No.
500 pieces	186320
2000 pieces	186321



Cabineo 12 black	Art. No.
500 pieces	186330
2000 pieces	186331

Cabineo 8/12 Starter set	Art. No.
Cabineo 8 + 12 (40 pieces each), incl. Cabineo hex bit and set of cover caps (40 pieces)	186305

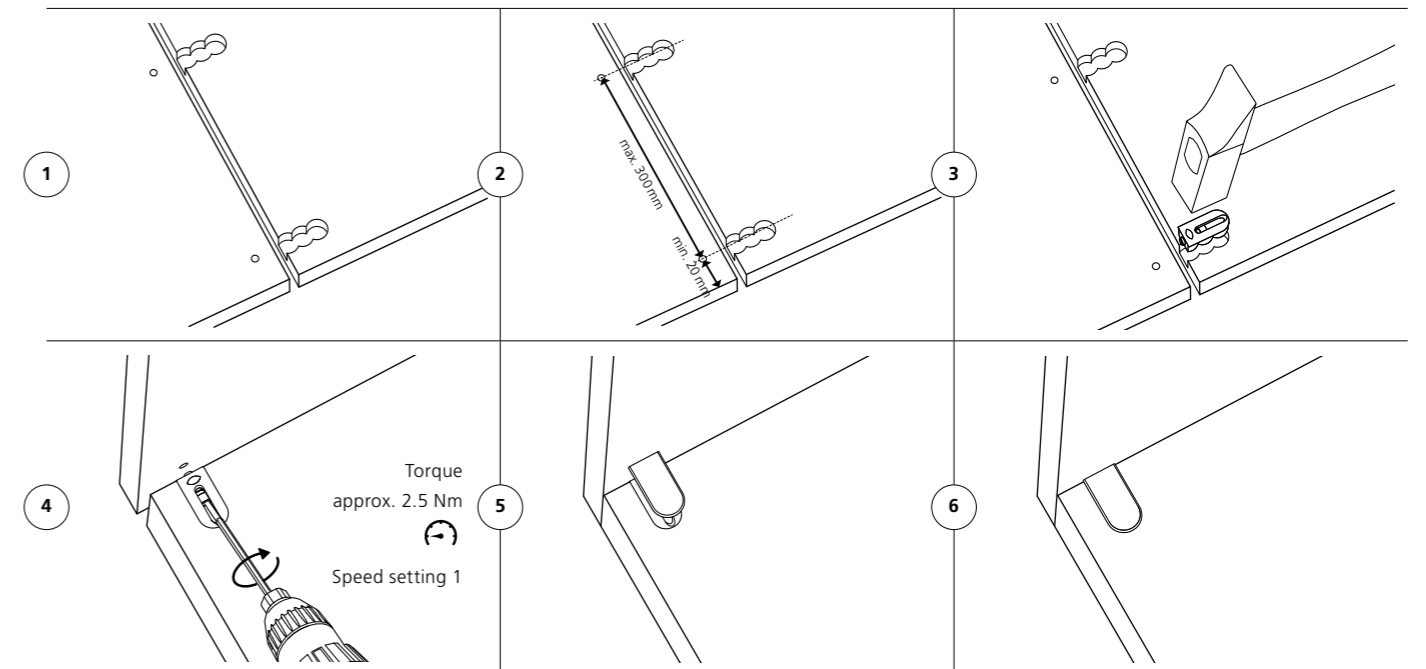
www.lamello



Experience the connector live and receive comprehensive product information!



Function



Technical data

Joining methods	Size	33.8 × 16.5 × 10.8 mm		
	Screw length	12 mm		
	Cutter	Ø 12 mm or smaller		
	Drill	Ø 5 mm and Ø 15 mm		
	Material housing	Fiberglass reinforced plastic		
	Installation tolerance	Long. ± 0.1 mm		
	Strength per connector without dowel (N)			
	Particle board 19 mm Up to	Tensile strength (N)	Shear strength	Clamping force
		900 ¹	850 ¹	900 ¹
		10 N ~ 1 kg		
	Material range	Particle board, MDF, plywood, softwood, hardwood etc.		

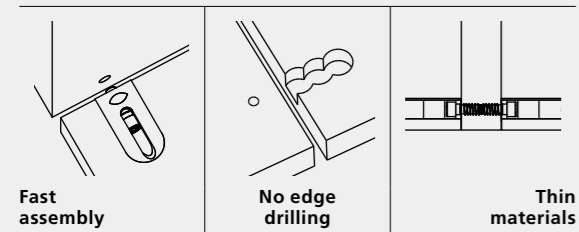
See **PAGE 28–29** for technical specifications | ¹ See comment on load limits on **PAGE 47**

Cabineo 8

Time-saving cabinet connector for centre panels from 16 mm



Features



Cabineo 8 is a one-piece cabinet connector which can be used with all CNC machines because only surface machining is required. The Cabineo is installed in the board either in the workshop or on site. The pre-assembled screw in the connector is screwed into the 5 mm hole of the second workpiece using a cordless drill. Cabineo impresses with its time-saving processing and assembly as well as the high clamping force which leads to stable connections without the need for additional dowels.

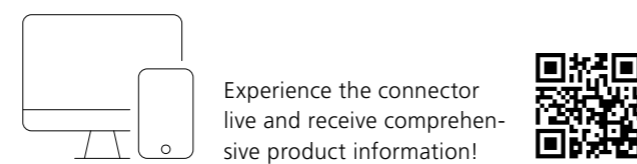
Articles

	Art. No.
Cabineo 8	
500 pieces	186310
2000 pieces	186311

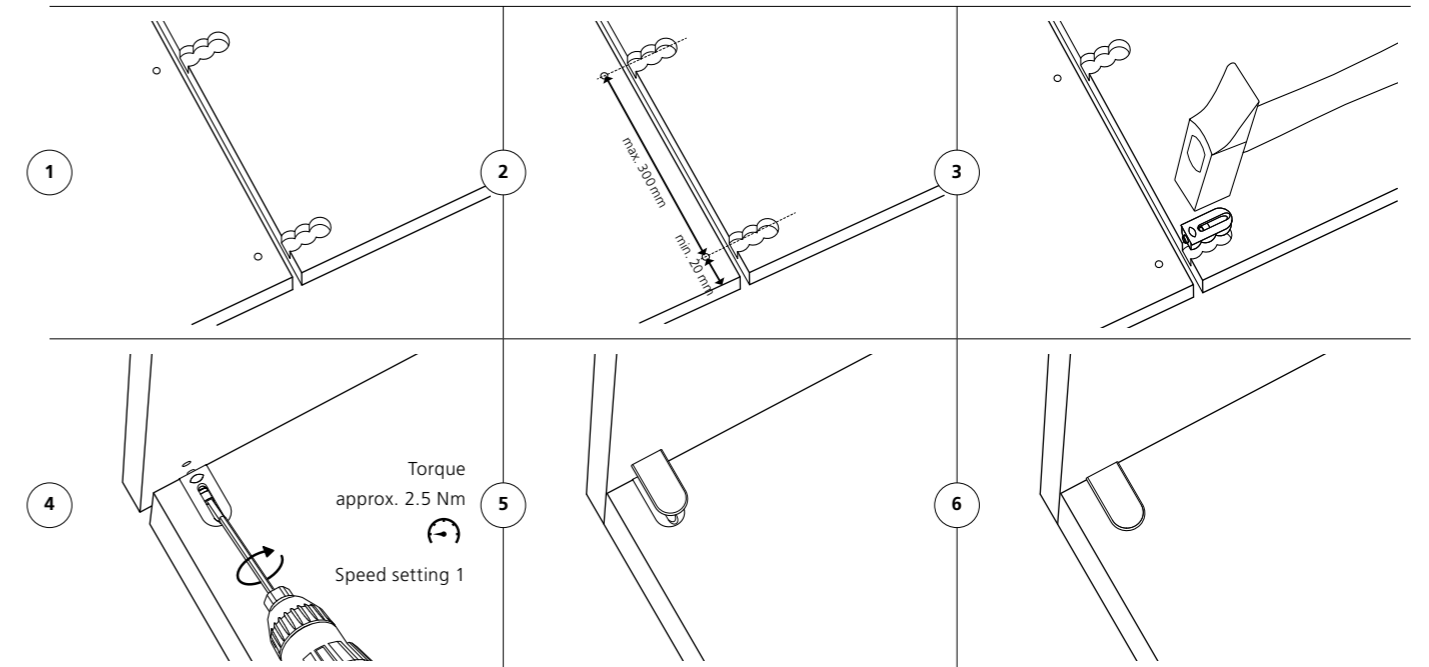
	Art. No.
Cabineo 8 black	
500 pieces	186340
2000 pieces	186341

Cabineo 8/12 Starter set	Art. No.
Cabineo 8 + 12 (40 pieces each),	186305
incl. Cabineo hex bit and set of cover caps (40 pieces)	

www.lamello



Function



Technical data

Joining methods	Size	33.8 × 16.5 × 10.8 mm		
	Screw length	8 mm		
	Cutter	Ø 12 mm or smaller		
	Drill	Ø 5 mm and Ø 15 mm		
	Material housing	Fiberglass reinforced plastic		
	Installation tolerance	Long. ± 0.1 mm		
	Strength per connector without dowel (N)			
	Particle board 19 mm Up to	Tensile strength (N)	Shear strength	Clamping force
		500 ¹	550 ¹	500 ¹
		10 N ~ 1 kg		
	Material range	Particle board, MDF, plywood, softwood, hardwood etc.		

See **PAGE 28–29** for technical specifications | ¹ See comment on load limits on **PAGE 47**

Cabineo 8 M6

Wear-resistant cabinet connector for various materials and increased strength



Features



Cabineo 8 M6 is a one-piece cabinet connector which can be used with all CNC machines because only surface machining is required. The connector is ideal when joining wood composites with materials such as aluminium, steel or compact laminate.

After installing the connector in the board, the pre-assembled metric screw is screwed into a threaded hole or a socket, using a cordless drill.

Cabineo impresses with its time-saving processing and assembly as well as the high clamping force which leads to stable connections without the need for additional dowels. Cabineo is available in white or black.

Articles



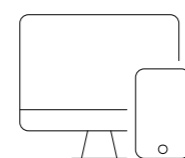
Cabineo 8 M6	Art. No.
500 pieces, metric thread M6	186315
2000 pieces, metric thread M6	186316



Cabineo 8 M6 black	Art. No.
500 pieces, metric thread M6	186345
2000 pieces, metric thread M6	186346

Cabineo 8 M6 Starter set	Art. No.
Cabineo 8 M6 (80 pieces), insert and cover caps (40 pieces each), Cabineo insertion tool (1 piece), Cabineo hex bit 1/4" (1 piece)	186306

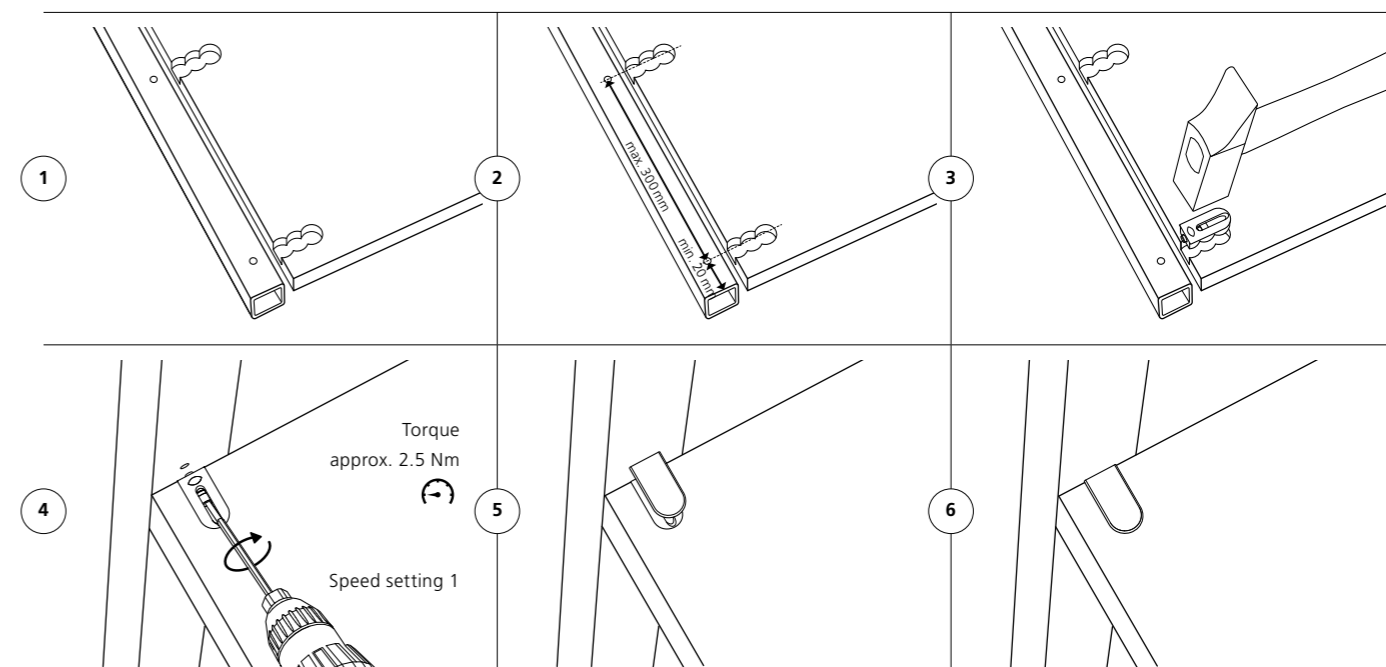
www.lamello



Experience the connector live and receive comprehensive product information!



Function



Technical data

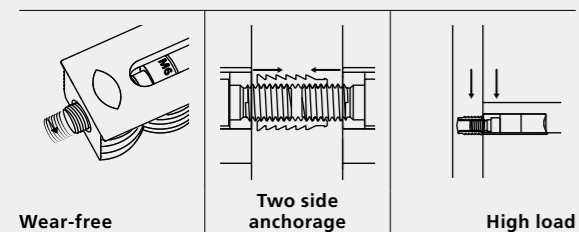
Joining methods	Size	33.8 × 16.5 × 10.8 mm		
	Screw length	8 mm		
	Cutter	Ø 12 mm or smaller		
	Drill	Ø 15 mm		
	Screw thread	M6		
	Material housing	Fiberglass reinforced plastic		
	Installation tolerance	Long. ± 0.1 mm		
	Strength per connector without dowel (N)			
	In HPL 12 mm Up to	Tensile strength (N)	Shear strength	Clamping force
		1700 ¹	1000 ¹	1700 ¹
		10 N ~ 1 kg		
	Material range	Particle board, MDF, plywood, softwood, hardwood etc.		

See PAGE 28–29 for technical specifications | ¹ See comment on load limits on PAGE 47

Cabineo insert M6

For repeated assembly and disassembly without loss of strength

Features




The Cabineo insert M6 is a threaded insert to drive in, which can be used in combination with the Cabineo 8 M6. It is ideal for applications where the thread cannot be cut directly into the workpiece or to increase the strength in corner and dividing panel joints. The Cabineo insert M6 is hammered into the through-hole of the middle panel so that the Cabineo can reach into the insert from both sides. The same connector and insert can be used everywhere for corner and dividing panels.



Articles

Cabineo insertion tool is included in delivery for the inserts.

	Cabineo insert M6 x 12.3	Art. No.
	100 pieces	186370
	500 pieces	186371

	Cabineo insert M6 x 15.3	Art. No.
	100 pieces, for dividing panels	186375
	500 pieces, for dividing panels	186376

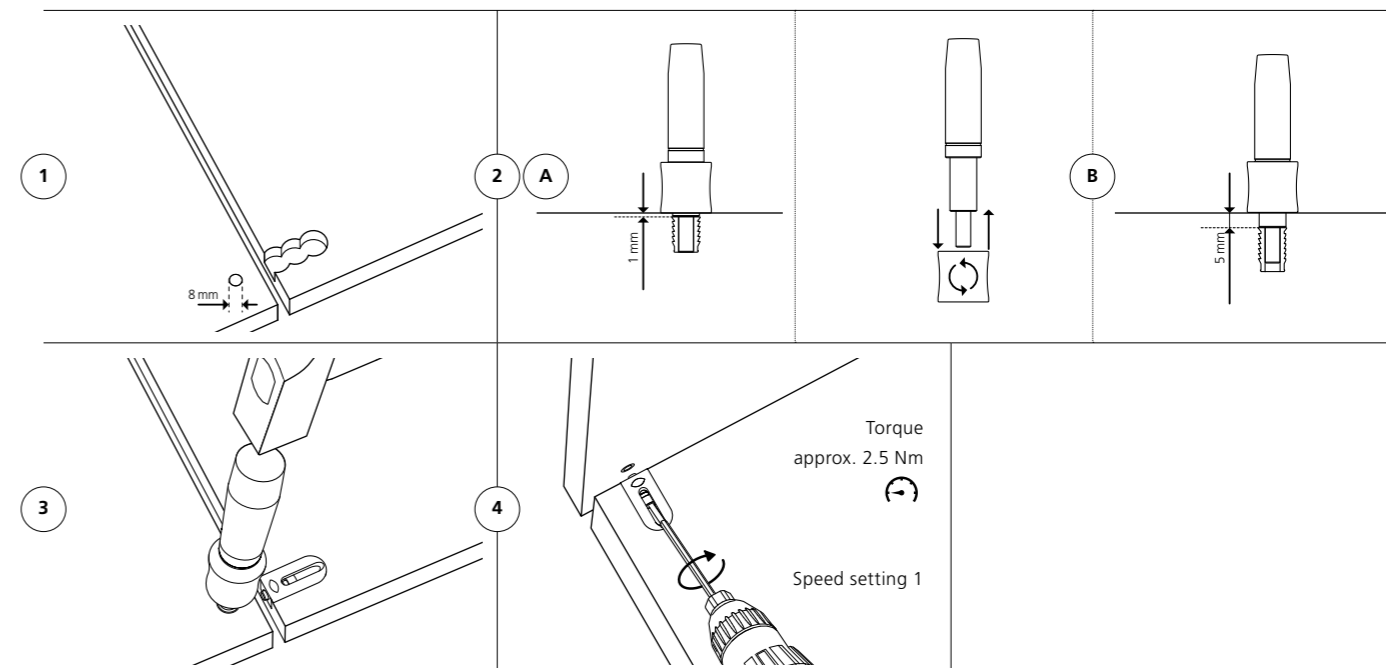
	Cabineo insert insertion tool	Art. No.
	For insert M6	276310

www.lamello.com

Experience the connector live and receive comprehensive product information!

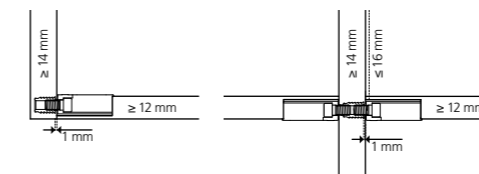



Function

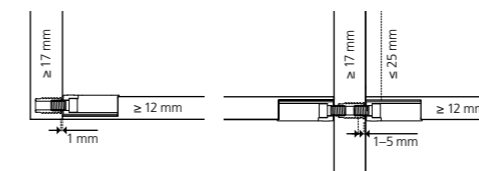


Technical data

Joining methods



Cabineo insert M6 x 12.3 for material thickness 14–16 mm



Cabineo insert M6 x 15.3 for material thickness 17–25 mm

Size	12.3/15.3 x 9.3 x 9.3 mm		
Thread	M6		
Drill hole	Ø 8 mm		
Material	Brass		
Installation tolerance	Long. ± 0.1 mm		
Strength per connector without dowel (N)			
Particle board 19 mm	Tensile strength (N)	Shear strength	Clamping force
Up to			
Insert M6 x 12.3	750 ¹	1050 ¹	750 ¹
Insert M6 x 15.3	900 ¹	1200 ¹	900 ¹
	10 N ~ 1 kg		
Material range	Particle board, MDF, plywood, softwood, hardwood etc.		

Application examples

Cabineo

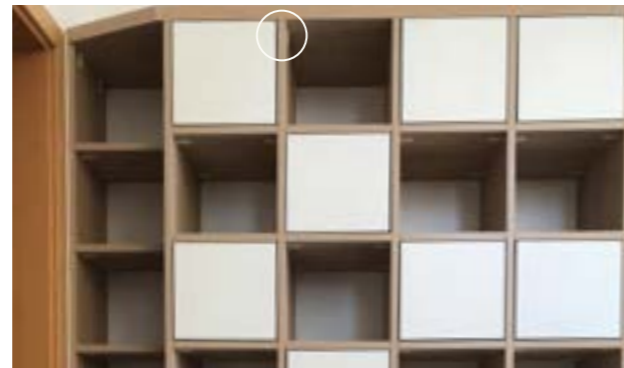
- Furniture manufacturing, interior fitting, trade fair construction, shop fitting, caravans
- Built-in cupboards, free-standing cupboards, kitchen cabinets, wall units, bookshelves, toilet partitions etc.
- Corner connections between the side panel and the base or top panel, dividing wall connections and joints of fixed shelves



Cabineo 8 M6



Cabineo 12



Cabineo 8



Cabineo 12






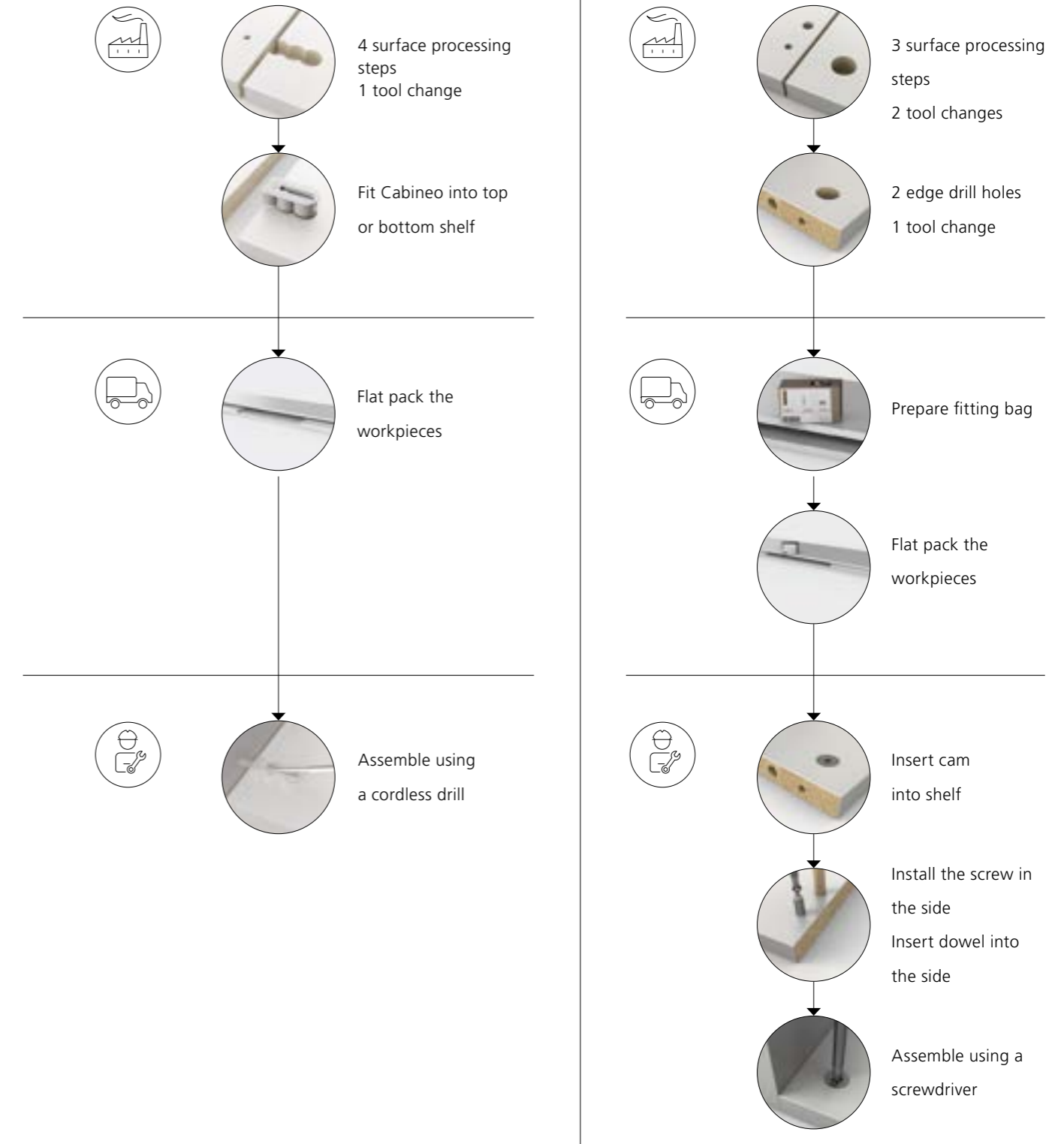
Cabineo 8 M6

Advantages of Cabineo

Simple, fast and strong

Cabineo compared with cam and dowel

<p>1. Advantages in production</p> <p>Time-saving in production</p> 	<ul style="list-style-type: none"> - Optimised process due to surface machining; no edge drilling necessary - Only one tool change from 5 mm to 15 mm drill; no tool change for the dowel hole drill necessary - No dowel holes means less drill holes per connector - Shallow element of 10 mm allows for panels from 12 mm thickness
<p>2. Advantages in transportation</p> <p>Time-saving in transportation</p> 	<ul style="list-style-type: none"> - Efficient pre-installation of the one-piece connector in the factory - Flat pack delivery with pre-installed connectors - No extra bags or loose hardware required with furniture shipment - Detachable for transport or if the fixed shelves need adjusting
<p>3. Advantages in assembly</p> <p>Time-saving in the assembly</p> 	<ul style="list-style-type: none"> - One-piece connector without dowels; no pre-assembly of screws or dowels in the side panels necessary - Easy positioning of the Cabineo in the corresponding hole due to the protruding screw - Fast assembly with a cordless drill - Installation of fixed shelves or vertical dividers in an already assembled unit



Examples of manufacturing and assembly processes

Cabineo



Flatpack workpiece delivery with pre-assembled connector.



Place furniture side on base. The element is correctly positioned by the protruding screw.



Join furniture elements with cordless drill and Cabineo tool. Easy, fast working with preset torque approx. 2.5 Nm.



Position top and push towards the furniture side.



Screw front corner in place with a cordless drill. This makes one-man assembly easy.



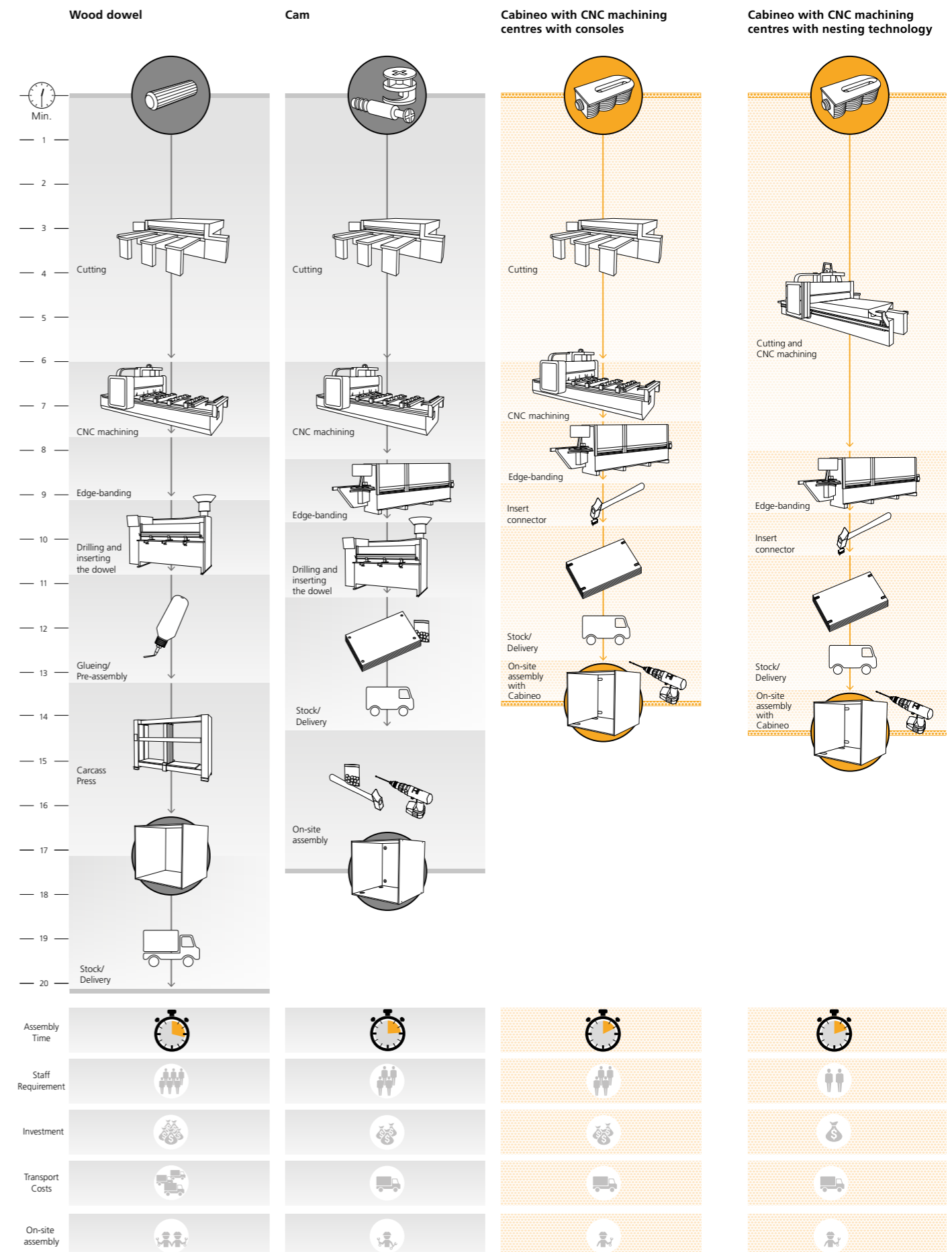
After assembly, fasten the fixed intermediate shelves in the required positions.



- Tip:
- Place one side of the shelf on the shelf support and fasten the other side
 - Retract the screw to facilitate installation.

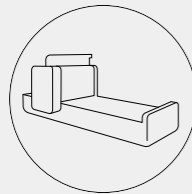


If required, use cover caps on the Cabineo.



Cabineo with CNC

Specific equipment options for CNC machines for Cabineo



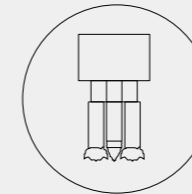
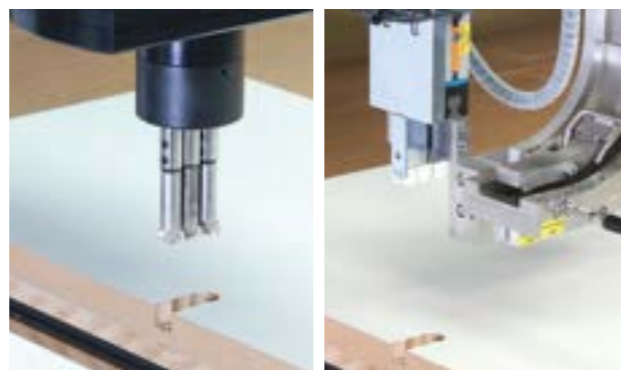
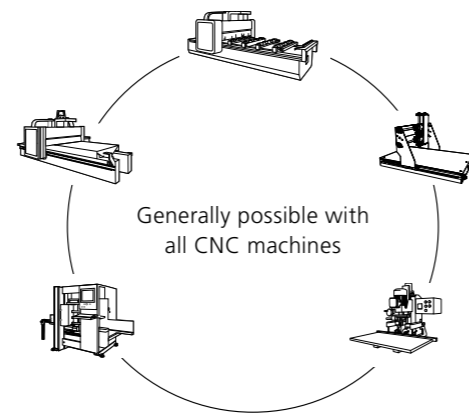
CNC machine

Homag CENTATEQ N-600

Homag has developed the unmanned installation of the Cabineo connector on its nesting CNC machine CENTATEQ N-600. First, the multi spindle aggregate from Benz creates the drill shape, consisting of 3 drill holes, in one plunge. Once the panels are cut to size, the machine will commence with the fully automated insertion of the Cabineo into the board.

Gannomat Basica Variabel 0194

First, the 3 spindle aggregate drills the 15 mm drill holes in one plunge. Following this, the Cabineo is held by an insertion aggregate and is pressed into the board. The 5 mm holes for the Cabineo screw are drilled either with the boss hinge aggregate or the 11 spindle shelf pin aggregate.



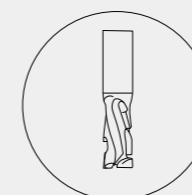
CNC tools - aggregate

Benz MULTI V3 CABINEO

Benz has developed a 3 spindle aggregate to drill the holes for the Cabineo in one plunge. This reduces the production time to 1–2 seconds (1 drill, anti-clockwise rotation; 2 drills, clockwise rotation).

Atemag VERTINEO Function Line

Atemag offers an aggregate for the efficient machining of the three Cabineo drill holes in one process step (2 drills, anti-clockwise rotation; 1 drill, clockwise rotation).



CNC tools

Leuco triple drill

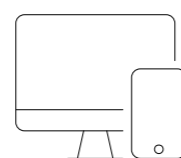
Leuco developed the three meshing drills for aggregates with triple multi-spindle head

Leitz triple drill

Leuco triple drill set for Cabineo aggregate.



www.lamello



Experience CNC live and receive comprehensive product information!



CNC tools


For Cabineo




Drilling System


Cabineo drill/cutter


 Art. No.
Cabineo drill Ø 15 mm with short centering point **136312**

 Art. No.
Cabineo cutter Ø 10 mm **136310**

 Art. No.
Cabineo cutter Ø 12 mm **136311**

Cabineo drills for triple aggregate*

 Art. No.
Cabineo drills for aggregate Ø 15 mm **136314**
RH carbide tipped (right hand rotation)

 Art. No.
Cabineo drills for aggregate Ø 15 mm **136315**
LH carbide tipped (left hand rotation)

* Benz: 2x 136314 and 1x 136315 (MULTI V3 CABINEO)
Atemag: 1x 136314 and 2x 136315 (VERTINEO Cabineo Drilling)



« We have tried out and compared many connectors. Processing for the Cabineo is extraordinarily simple, and allows us to make significant time savings throughout the production process. »

Andreas Derrer, Owner and Managing Director, Schreinerei Derrer AG,
Dielsdorf, Switzerland

Accessories / Spare Parts

Drilling System



Cabineo



Cabineo installation tool	Art. No.
With handle, incl. hex bit 1/4"	256300



Cabineo hex bit 1/4" GL 120 mm	Art. No.
	276312



Cabineo hex bit 1/4" GL 80 mm	Art. No.
	276308
Cabineo hex bit 1/4" GL 80 mm, 100 pieces	276309



Cabineo drill/cutter	Art. No.
Cabineo drill Ø 15 mm with short centering point	136312



Cabineo cutter Ø 10 mm	Art. No.
	136310



Cabineo cutter Ø 12 mm	Art. No.
	136311



Cabineo drills for aggregate* Ø 15 mm	Art. No.
RH carbide tipped (right hand rotation)	136314



Cabineo drills for aggregate* Ø 15 mm	Art. No.
LH carbide tipped (left hand rotation)	136315



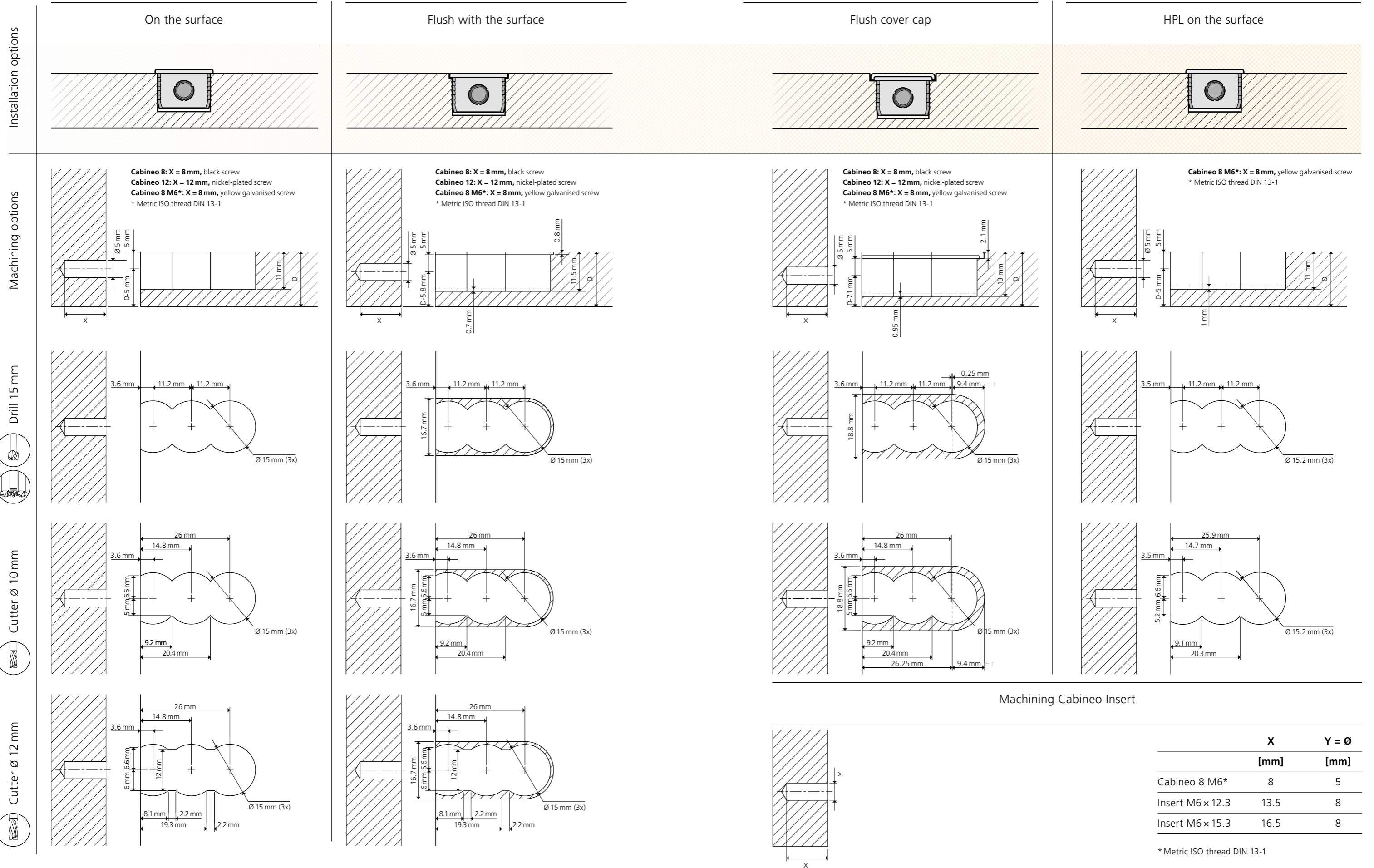
	Art. No.	
	100 pieces	2000 pieces
RAL 9003 signal white	186350S	186351S
RAL 9010 pure white	186350W	186351W
RAL 9018 papyrus white	186350P	186351P
RAL 1015 light ivory	186350H	186351H
RAL 1011 brown beige	186350B	186351B
RAL 8007 fawn brown	186350R	186351R
RAL 7040 window grey	186350F	186351F
RAL 7005 mouse grey	186350A	186351A
RAL 9005 jet black	186350T	186351T
Metal look, silver	186350C	186351C
Metal look, nickel	186350N	186351N
Metal look, dark steel	186350D	186351D



Cabineo insert insertion tool	Art. No.
For insert M6	276310

Technical information

Machining Cabineo



	X	Y = Ø
	[mm]	[mm]
Cabineo 8 M6*	8	5
Insert M6 × 12.3	13.5	8
Insert M6 × 15.3	16.5	8

* Metric ISO thread DIN 13-1

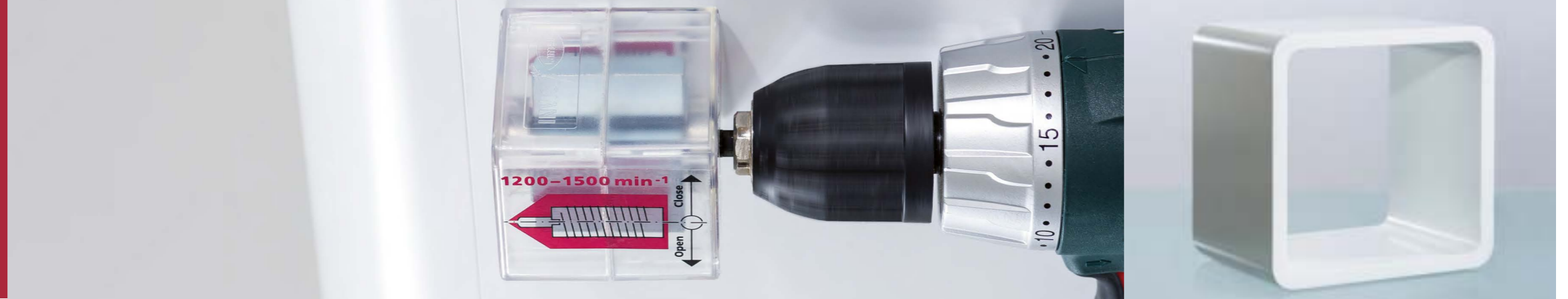
« I am impressed with the strength of this invisible connection. Even after repeatedly opening and closing the joint. »

Walter Fankhauser, Production Manager at Röthlisberger, Gohl Branch, in Emmental, Switzerland

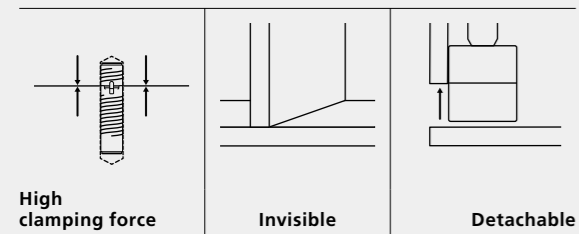


Invis Mx2

Magnet-driven connecting fittings



Features



Invis Mx2 is a unique, magnet-driven connection for the highest demands on aesthetics, stability and productivity. With no visible openings, Invis Mx2 is connected and disconnected quickly again and again, using its magnetic drive.

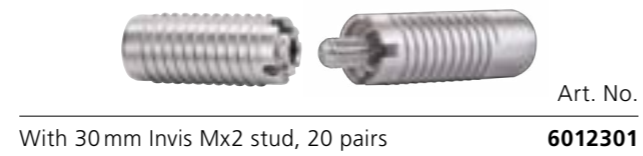
Invis Mx2 connectors are screwed into the 12 mm drill holes in the panel. Using the MiniMag with a cordless drill, the connection closes and creates a clamping force of up to 250 kg per connector.

Ideal for high gloss painted furniture, molded workpieces, stairs, etc.

Articles



Invis Mx2 connector set Art. No. **6012300**
With 14 mm Invis Mx2 stud, 20 pairs

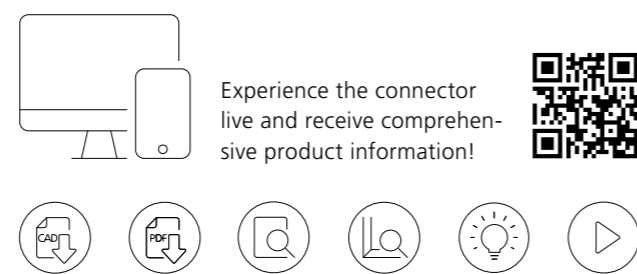


Art. No. **6012301**
With 30 mm Invis Mx2 stud, 20 pairs



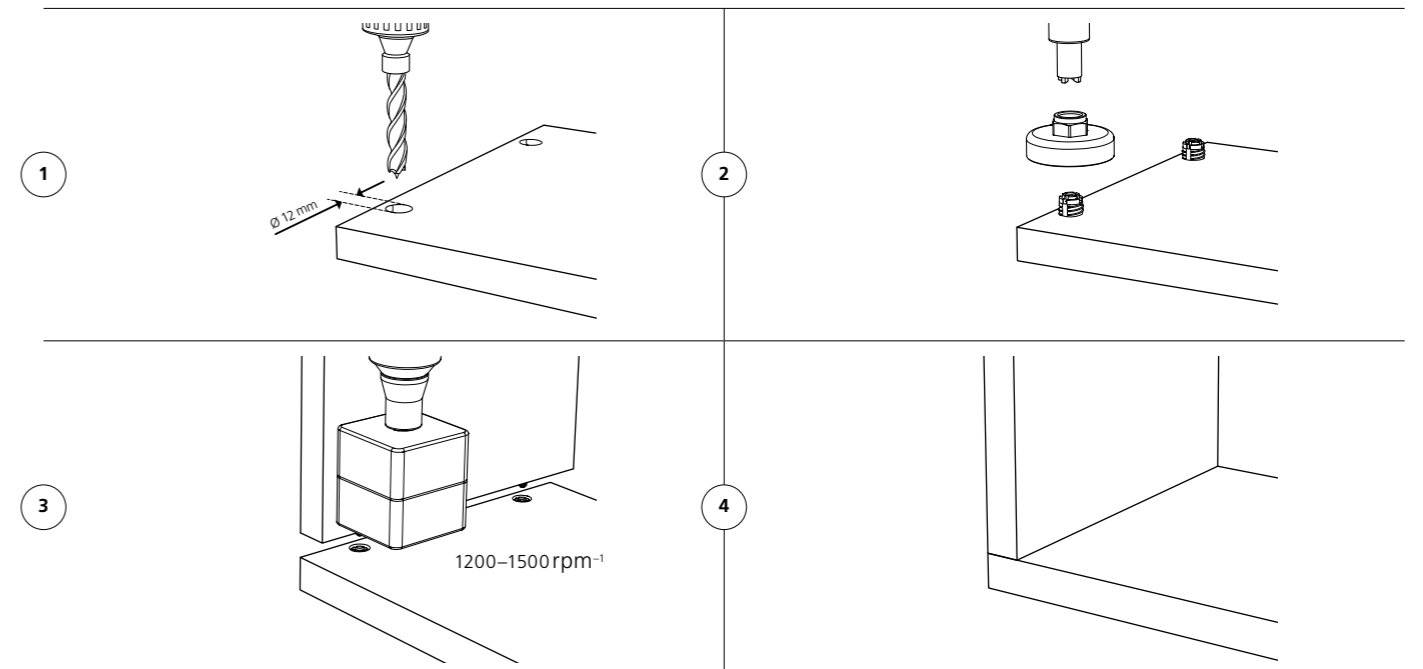
Invis Mx2 Starter set Art. No. **6100302**
Invis Mx2 MiniMag, Invis Mx2 connector sets, 20 pairs, with 14 mm Invis Mx2 stud, Rasto drill jig with 12 mm drill bit, depth adjuster, bushing, screw bit, flexible shaft, insertion jig

www.lamello



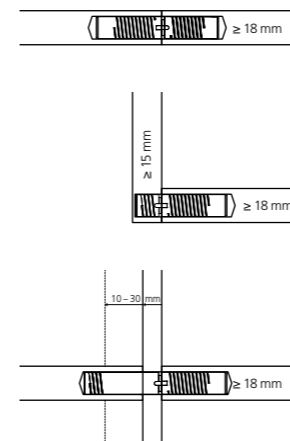
Experience the connector live and receive comprehensive product information!

Function



Technical data

Joining methods



Size connector	Ø 12 x 35 mm	
Size stud	Ø 12 mm x 30/14 mm	
Size centre-wall stud	Ø 12 mm x 30 mm	
Drill	Ø 12 mm	
Speed MiniMag	Must be 1200-1500 rpm ⁻¹	
Material housing	Zinc	
Installation tolerance	Long. ± 0.1 mm	
Clamping force per connector	250 kg ¹	
Tensile strength (N) Up to	Connector sets with stud	14 mm 30 mm
	MDF	1500 N ¹ 4000 N ¹
	Particle board	600 N ¹ 1600 N ¹
	Beech	2000 N ¹ 4000 N ¹
	Spruce	1000 N ¹ 2000 N ¹
Material range	Particle board, MDF, plywood, softwood, hardwood etc.	

See PAGE 42-43 for technical specifications | ¹ See comment on load limits on PAGE 47

Articles



Invis Mx2 connector 35 mm

Art. No.

20 pieces

6012317



Invis Mx2 stud 14 mm

Art. No.

20 pieces

6012312



Invis Mx2 stud 30 mm

Art. No.

20 pieces

6012309



Invis Mx2 centre wall stud 10-30 mm

Art. No.

10 pieces

6012208



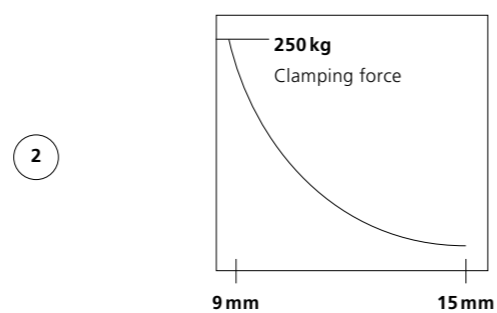
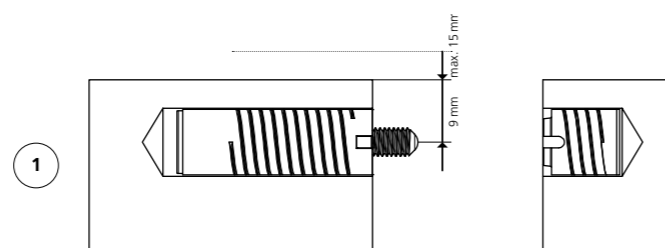
Invis Mx2 MiniMag

Art. No.

Incl. screw bit

6100301

Function



Small distance from the edge for high clamping force

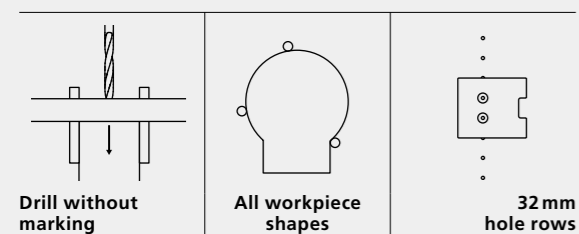


Rasto drill jig

Universal drill jig without measuring or marking



Features



Rasto is a universal drilling jig and is used for creating precise drilled holes for Invis Mx2. The drilling jig can be clamped onto almost any workpiece shape by means of three positioning pins without measuring or marking. After the first workpiece has been drilled, the position is transferred unchanged to the second workpiece. Working in this way means the holes will always line up with each other.

Rasto is also suitable for 8 mm dowel holes or 5 mm holes for handles or for row hole drilling.

Articles

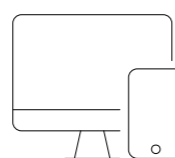


Rasto Duo set Art. No. **126007**
 In a systainer: 2 transparent perforated plates,
 8 drill bushings, 2 × Ø 5, 8, 10, 12 mm,
 3 wood drill bits Ø 5, 8, 12 mm, 6 positioning bolts,
 2 fastening screws, 1 connection rod,
 1 Invis Mx2 spacer, 1 Invis Mx2 insertion bush

Rasto Basic set Art. No. **126005**
 In a cardboard box: 1 transparent perforated plate,
 4 drill bushings Ø 5, 8, 10, 12 mm,
 3 positioning bolts, 1 fastening screw

Rasto Mono set Art. No. **126006**
 In a systainer: 1 transparent perforated plate,
 4 drill bushings Ø 5, 8, 10, 12 mm, 3 wood drill bits
 Ø 5, 8, 12 mm, 3 positioning bolts, 1 fastening screw,
 1 Invis Mx2 spacer, 1 Invis Mx2 insertion bush

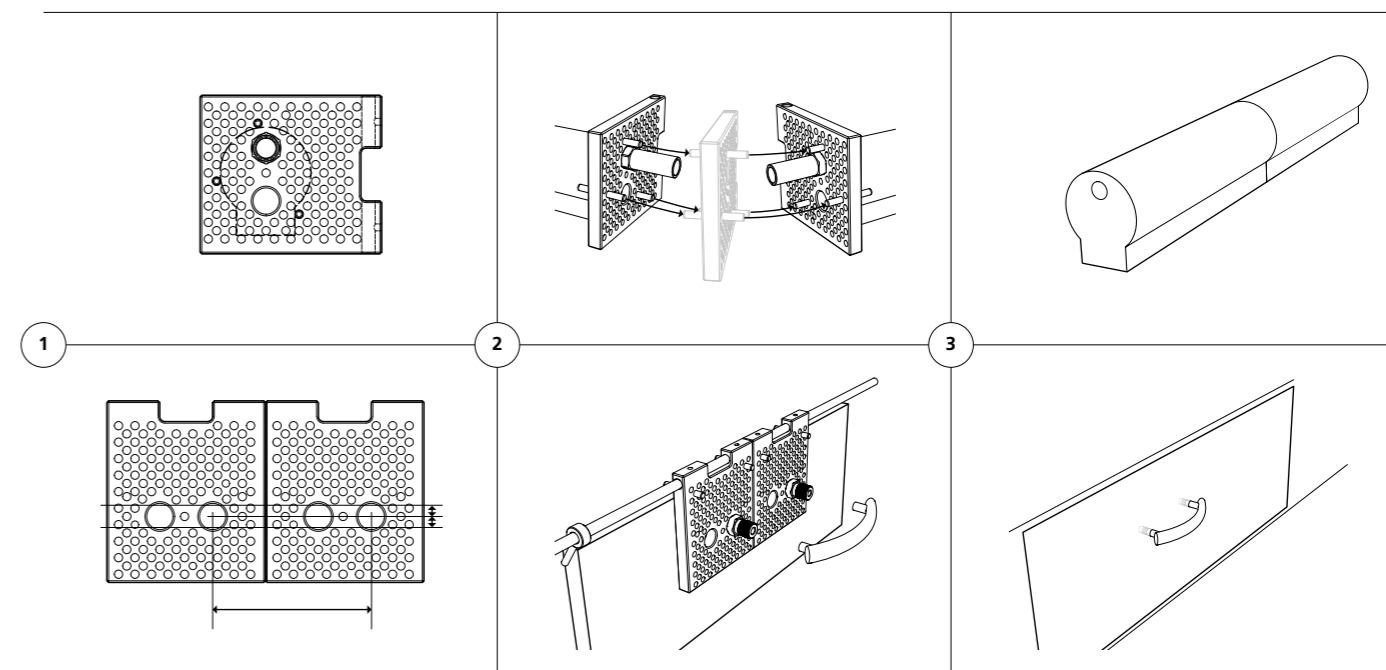
www.lamello



Experience Rasto live
and receive comprehensive
product information!

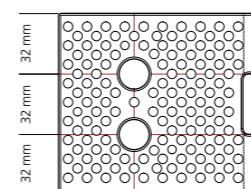


Function



Technical data

Rasto perforated plate



Size Rasto plate	110 × 96 × 12 mm
Material Rasto plate	Polycarbonate

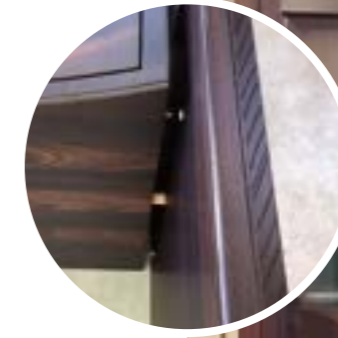
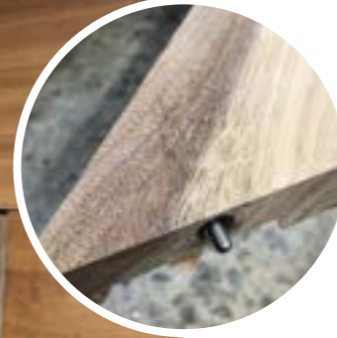
Application examples

Invis Mx2

Tables, shelves and wardrobes, Shopfitting systems, handrail pre-production, boat interior fittings, exhibition constructions, quality furniture, stairs, substructures, partition elements, wall panels, furniture, table legs, dividing panels

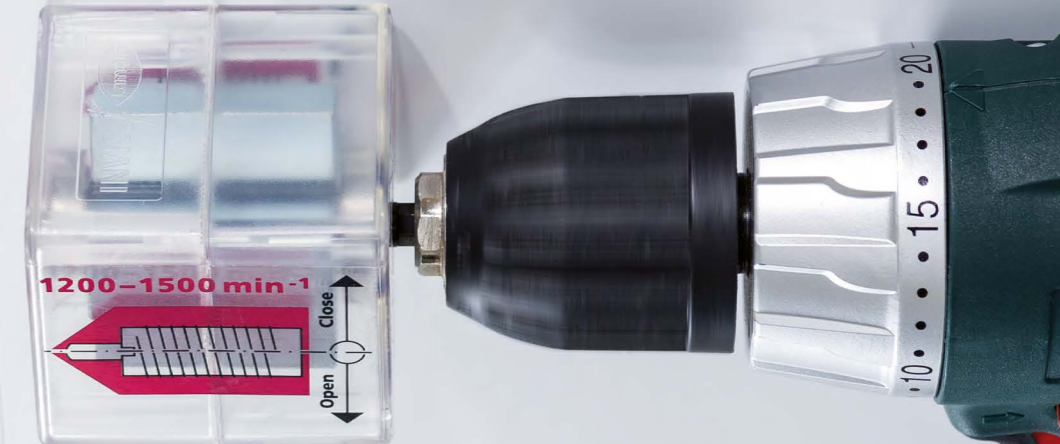


Invis Mx2



Accessories / Spare Parts

Drilling System



Invis Mx2



Invis Mx2 screw bit Art. No. **6112205**
1 piece



Invis Mx2 MiniMag Art. No. **6100301**
Incl. screw bit



Invis Mx2 flexible shaft Art. No. **6100204**
1 piece



Invis Mx2 insertion jig Art. No. **6112333**
For studs 14mm



Invis Mx2 insertion bush for Rasto Art. No. **6112330**
For studs 14mm

Rasto



Rasto wood drill bit with centering tip Art. No.
 Ø 5 mm **6100160**
 Ø 6 mm **6106161**
 Ø 8 mm **6108060**
 Ø 10 mm **6110162**
 Ø 12 mm **6112060**



Rasto depth adjuster Art. No.
 Ø 5 mm **6100059**
 Ø 6 mm **6100063**
 Ø 8 mm **6100060**
 Ø 10 mm **6100064**
 Ø 12 mm **6100061**



Invis Mx2 spacer Art. No. **6112331**
For Rasto



Rasto perforated plate Art. No. **6160000**
1 piece



Rasto drill bush Art. No.
 Ø 5 mm **6100065**
 Ø 6 mm **6100056**
 Ø 8 mm **6100057**
 Ø 10 mm **6100067**
 Ø 12 mm **6100058**



Rasto fixing screw Art. No. **6560450**
4.5 x 35 mm, TX 25



Rasto positioning bolts Art. No. **6160001**
Ø 5 x 40 mm

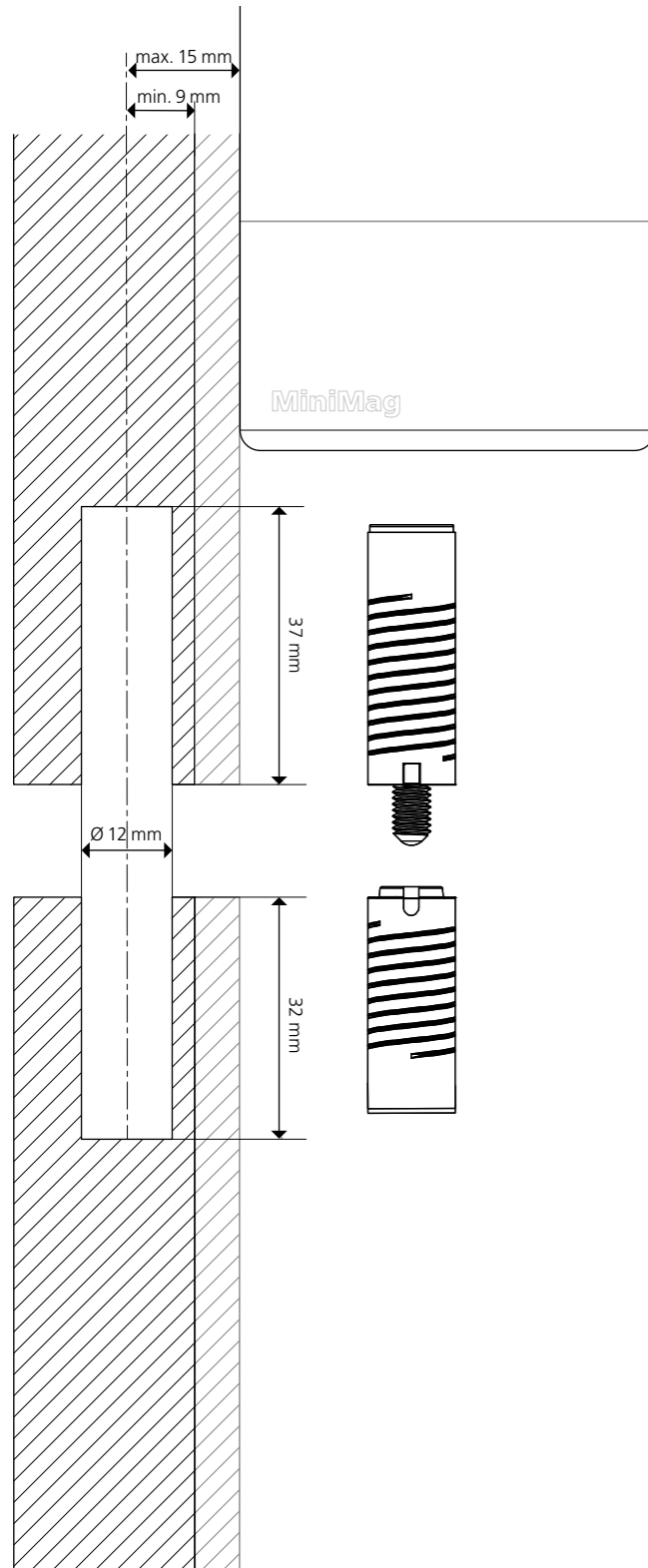


Rasto connection rod 500 mm Art. No. **6160601**
Two-part

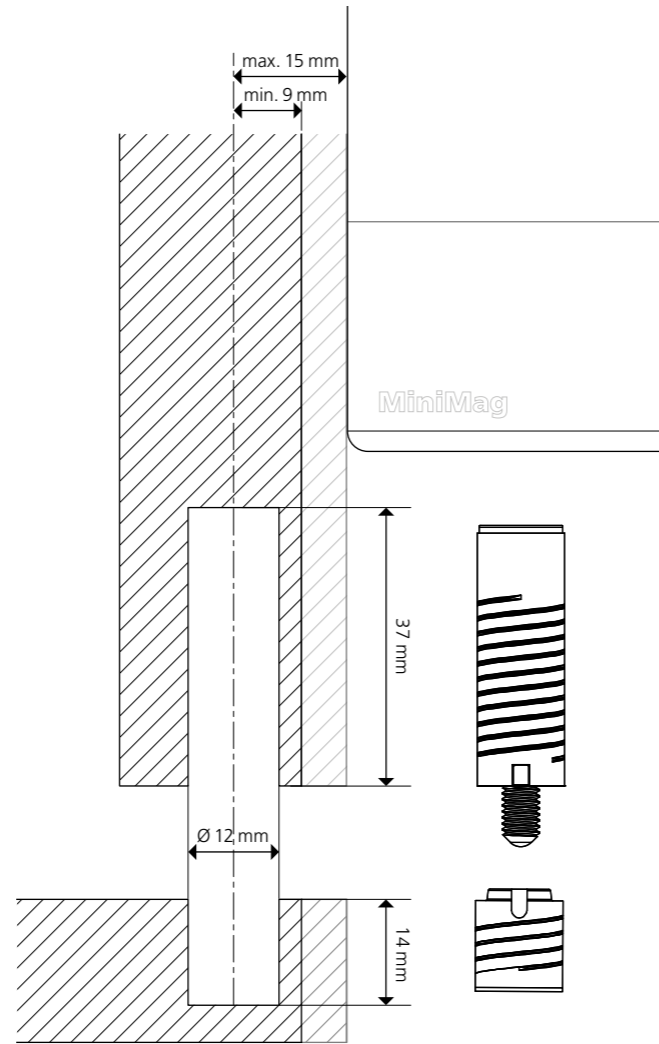
Technical information

Machining Invis Mx2

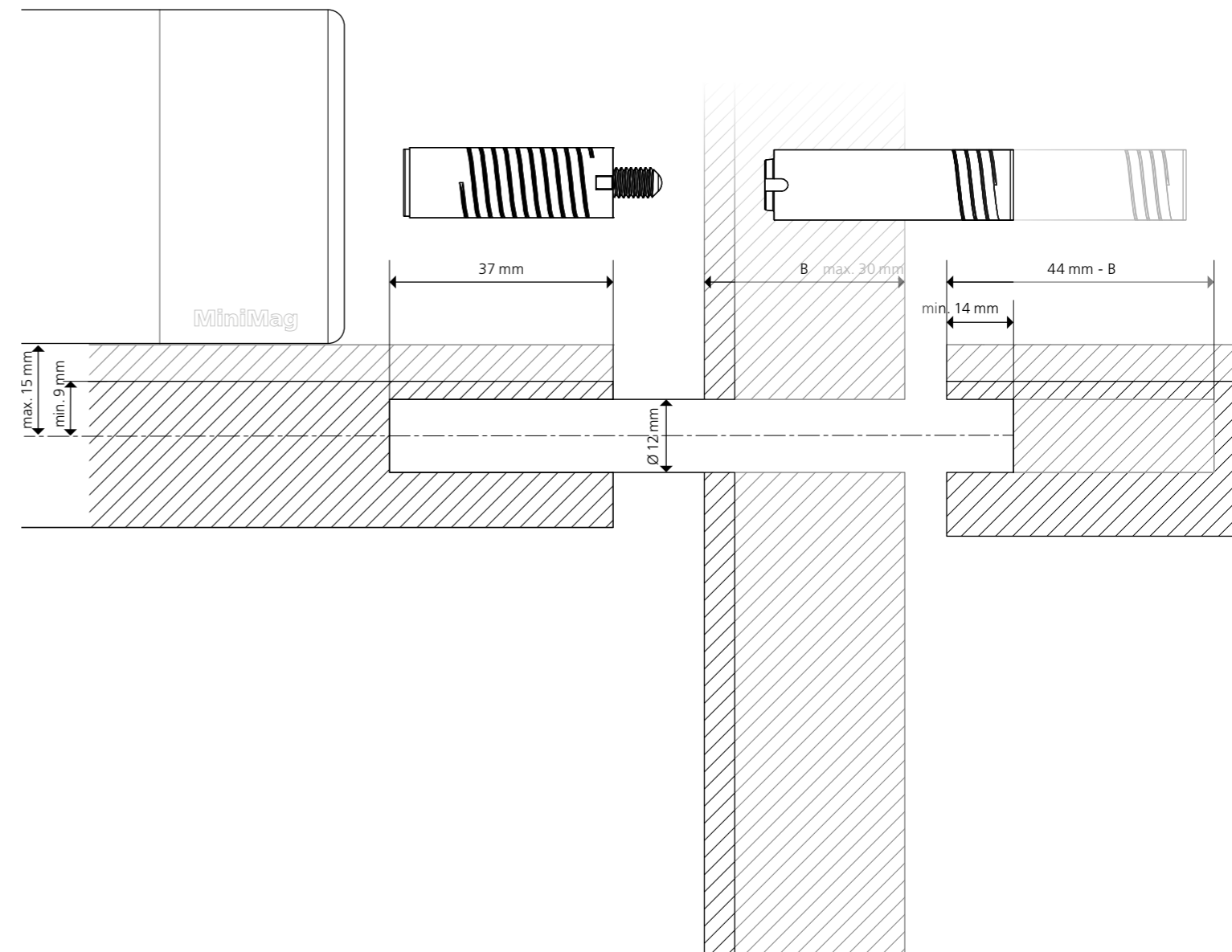
Invis Mx2 stud 30 mm



Invis Mx2 stud 14 mm



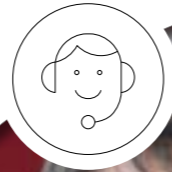
Invis Mx2 centre wall stud 14–30 mm



We are here for you!

Support in person

Do you have any questions concerning our products or a certain application? Would you like to learn more about the process benefits for your business? Our qualified employees and sales partners will be happy to help you quickly and competently, whether by telephone, online or during a personal support on site.



Latest news

Stay up-to-date and sign up for our Lamello News and e-newsletter. Become part of the Lamello community on social media and be inspired, or visit our stand at one of the numerous trade fairs. We are always happy to hear from you.



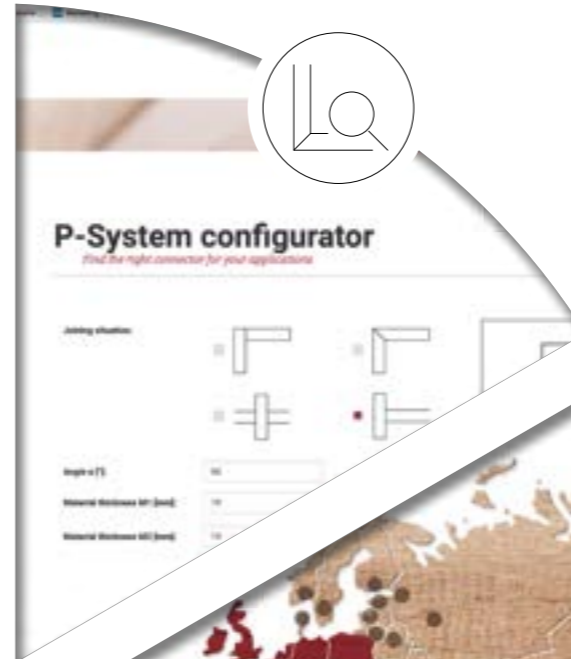
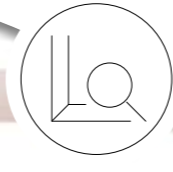
Our services

Quality is one of the cornerstones of our business, and so our products are designed to last. If a repair is necessary, we can offer you uncomplicated service through our certified Lamello service partners and a spare parts warranty of at least 10 years.



Support in your planning

With the connector search and the P-System configurator on our website, you can quickly find the right connector for your design and requirements. With CAD data for our connectors, tips and tricks, as well as videos about the wide range of applications, we can guide and support you in your planning on our website and on the Lamello YouTube channel.



Qualified sales partners

Our professional and committed sales partners provide you with qualified advice, always keeping you informed about new products. This way, you can see the benefits of our products first hand.



Competent planning and machining partners

From planning and design to the right tool to machine with the CNC machine: more than 40 industry-leading partner companies support the efficient use and integration of our products into your production.



Overview of connectors

Drilling System

- 1 Cabineo 8: X = 8 mm, black screw
 - 2 Cabineo 12: X = 12 mm, nickel-plated screw
 - 3 Cabineo 8 M6*: X = 8 mm, yellow galvanised screw
- * Metric ISO thread DIN 13-1

Cabineo		Pieces	Art. No.	Installation options		Machining options	
Detachable	Cabineo 12	500	186320		On the surface 1, 2, 3		
		2000	186321		Installation options		
	Cabineo 12 black	500	186330		Flush with the surface 1, 2, 3		
		2000	186331		Installation options		
	Cabineo 8	500	186310		On the surface 1, 2, 3		
		2000	186311		Installation options		
	Cabineo 8 black	500	186340		Flush with the surface 1, 2, 3		
		2000	186341		Installation options		
	Cabineo 8 M6 metric thread M6	500	186315		On the surface 1, 2, 3		
		2000	186316		Installation options		
	Cabineo 8 M6 black metric thread M6	500	186345		Flush with the surface 1, 2, 3		
		2000	186346		Installation options		
	Cabineo insert M6 x 12.3	100	186370		Machining Cabineo Insert		
		500	186371		Installation options		
	Cabineo insert M6 x 15.3 for centre panels	100	186375		Machining Cabineo Insert		
		500	186376		Installation options		

Invis Mx2		Pairs	Art. No.	Installation options	
Detachable	Invis Mx2 connector set with 14 mm Invis Mx2 stud	20	6012300		Small distance from the edge for high clamping force
	Invis Mx2 connector set with 30 mm Invis Mx2 stud	20	6012301		
	Invis Mx2 connector 35 mm	Pieces	Art. No.		
		20	6012317		
	Invis Mx2 stud 14 mm	20	6012312		
	Invis Mx2 stud 30 mm	20	6012309		
	Invis Mx2 centre wall stud 10-30 mm	10	6012208		

Disclaimer regarding load limits

Wherever we list information on material strength or loads for our products, they are empirical values of load limits, based on specifically defined test conditions similar to DIN 68501:2016-11. Specific characteristics, in particular to the effect that the products will reach the listed loads in the actual used case, are not thereby guaranteed. Rather, it is the responsibility of the respective user to check and ensure the suitability of the products for each specific used case. Since actual load limits substantially depend on circumstances unrelated to the products themselves, e.g. the properties of the carrier materials used, the assembly or the installation environment, any advice provided by us in the form of a product recommendation with regard to a specific suitability is always non-binding and does not release the user from his or her own examination. **To the maximum extent possible under the law, all warranties, express or implied are DISCLAIMED. This includes, but is not limited to, any warranty of fitness for a particular purpose or merchantability. We undertake no responsibility that the goods except as may be included in any contract, and we assume no responsibility that the goods will be fit for any particular purpose, except as may be provided in any contract.**

Subject to modifications and amendments

© Lamello AG. The content of this brochure is protected by copyright and cannot be used for any other purpose without the written consent of Lamello AG.



Manufacturer:
Lamello AG
Joining technology
Hauptstrasse 149
CH-4416 Bubendorf
Tel. +41 61 935 36 36
Fax +41 61 935 36 06
info@lamello.com
www.lamello.com

Drilling System 06 / 23

Art. No. 986321 EN