

## NCB612T - CNC 6-Sided Drilling Machine



### Description

- Nanxing has invested quite a lot on world class 5 Axis CNC machining Center and robot integration work station for metal works, making its production very top in the woodworking machinery. MES System - SOP Processing -Total QC Control guarantee the high quality of your machines.
- Powerful CNC CONTROL SYSTEM equipped with specialist software to run for high process efficiency and easy operation, the fastest in the field industry.
- Full function operation mode can satisfy different process request.
- Top drilling blocks Ver. **18** plus Hor. X &Y 6+4, 1 bottom drilling block with ver. 9. TOTAL drills are 37. Top and bottom have 3,5kw spindle router. One crosshead spindle with horizontal processing.
- Adapt 7 kinds of file format and common furniture design software.
- Customer Reference: **30+** countries; **2000+** machines

## Details

---

### 1. Machine body

- Heavy duty machine body is welded with square tube and laser-cut steel plates, then through processing of advanced CNC machine for metal work, hence enhance the stability and strength, reduce the vibration in the process; Gantry and machine body have been designed as one organic structure of high rigidity;
- Frame body pass the **heat treatment** and **vibration aging treatment** to guarantees the whole service life without deforming.
- After **sandblasting** and **painting**, the top-grade CNC metal processing machines are used to process the body and components to make sure perfect quality and detail.



### 2. Quality control

- Advanced measuring equipment and strict QC system also help to make sure the final machine we offer to our customers are of high quality;
- All the machines are delivered with Quality Certificate signed by QC specialist.



### 3. Professional assembly line

- Assembly is final and important step for better machine performance. Nanxing's professional assembly lines from machine body to small electrical components were by experienced technicians that guarantee machine standardization and performance.



### 4. Feed-in

#### Air float table

- Floating feed table full of steel balls with sufficient air ensures panel transmitted extremely smooth without any scratches on panel surface.
- Air supplier: 1.1kw



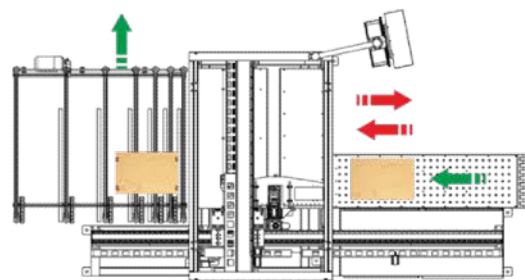
#### Dual clamps

- Long guiding rail with dual clamps for fast processing work of various work pieces; Special air blow design to clean the clamp before clamp the workpiece.



### Feed-out

- Can choose feed mode feed-in & out in front side or feed-in in front and feed-out in back.
- Feed out in back mode with 2 steps smooth out.
- The hairbrush and conveyor belt can offer very good protection to the surface.





## 5. Positioning

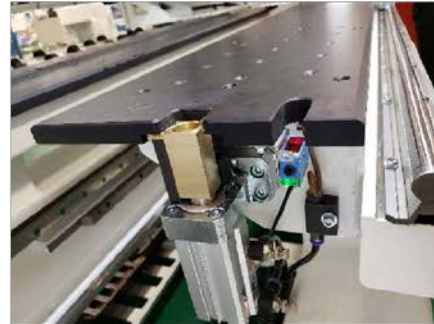
### Side alignment

- Dual clampers cooperate well with auto side alignment to guarantee precision and stability in panel processing.



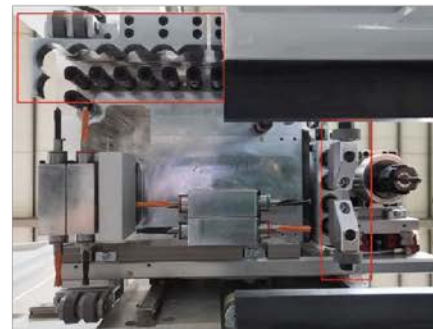
### Stopper

- The stop is strong design to offer stable alignment. Besides, the sensor can measure the workpiece X length. The air blow will clean the dust on the sensor.



### Press device

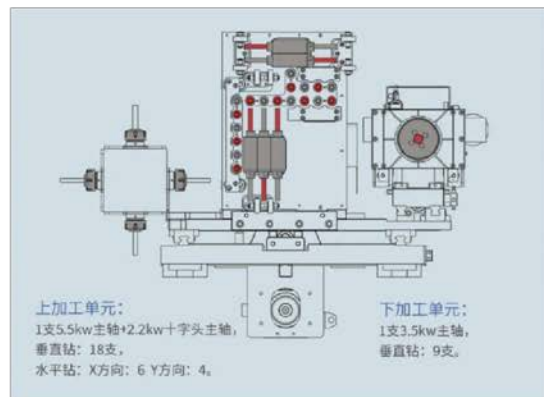
- The stop is strong design to offer stable alignment. Besides, the sensor can measure the workpiece X length. The air blow will clean the dust on the sensor.



## 6. Drilling blocks

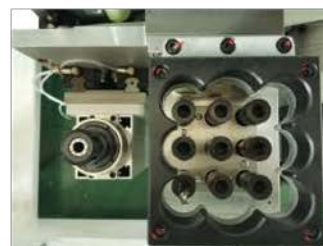
### Top drilling block:

- 3.5kw world famous main spindle + 1 drilling block, increasing.
- Vertical drills: **18**  
Horizontal drills: 3\*3 in X direction; 2\*2 in Y direction.
- Crosshead spindle, for horizontal processing, working range: 0- 800mm



### Bottom drilling block:

- 3.5kw world famous main spindle+ one boring block
- 9 vertical drills



## 7. 4 tools slot

- Tool type ER25, main spindle can change tool automatically from 4 slots



## 8. Accurate movement of each axis

### X and Y direction

- Transported by high-stiffness rack and pinion, ensures the high precision, stability, smooth running and long service life.



### Z direction

- Ball screw rod gives the machine added precision in Z direction.



### Servo motor

- The accurate movement of each axis is ensured by the high quality servo motors.  
X axis: 0.75kw\*2;  
Y axis: 0.85kw\*3;  
Z axis: 0.85kw\*3.
- Max travelling speed:  
X/U/Y/Z:135/135/75/30m/min



## 9. Drag chain

- High-quality drag chain used to drag and protect electric wire and air tube during movement of each axis for longer service life.



### 10. Hand wheel

- Hand wheel makes commissioning more convenient.



### 11. Min. processing part

- NCB2412S drilling block design and software can do drilling for 30×250mm.



### 12. Bar-code reader

- Read the panel processing information generated by furniture making software, Panel processing can be simply performed by scanning the Bar code, especially suitable for production line.

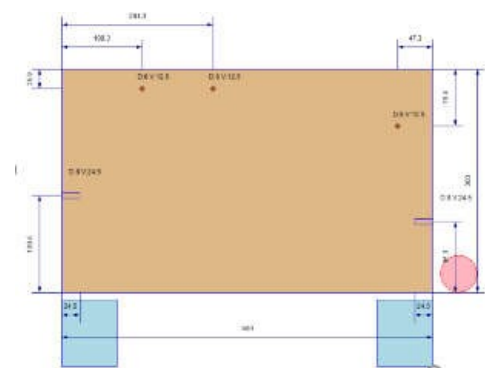
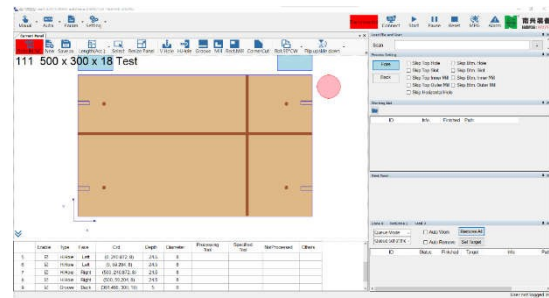


### 13. IPC

- IPC with Windows 10 operating system. ➤ 17" DELL display;

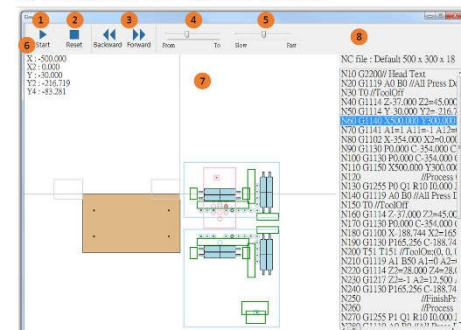
## 14. Multi-function operation

- Control interface is modern and friendly;



## Feature;

## 9.6 Drill Machine PC CAM - Auto Mode - Simulation



### Simulation;

### 15. File format support.

- support the file format, such as MPR, DXF, BAN, BPP, PDX; XML; XXL.





## Technical Data

|                             |                           |                 |
|-----------------------------|---------------------------|-----------------|
| <b>Total power</b>          | 22.5 KW                   |                 |
| <b>Machine size</b>         | 6, 150 * 2,806 * 2,353 mm |                 |
| <b>Power supply</b>         | 380V/50Hz                 |                 |
| <b>Air supply</b>           | 0.6-0.7MPa                |                 |
| <b>Total weight</b>         | 3,500Kg                   |                 |
| <b>Control system</b>       | Brand                     | SYNTEC          |
| <b>Panel size</b>           | Length                    | 250-2,400mm     |
|                             | Width                     | 30-1,200mm      |
|                             | Thickness                 | 8-50mm          |
| <b>Max. traveling speed</b> | (X /U) axis               | 135m/min        |
|                             | Y axis                    | 75m/min         |
|                             | Z axis                    | 30m/min         |
| <b>Working table</b>        | Material                  | HPL+ steel      |
|                             | Table size                | 2,150 X 600     |
|                             | height                    | 960mm           |
| <b>Transmission mode</b>    | X axis                    | Rack and pinion |
|                             | Y axis                    | Rack and pinion |
|                             | Z axis                    | Ball screw rod  |
| <b>Servo motor</b>          | X axis                    | 2*0.75kw        |
|                             | Y axis                    | 3*0.85kw        |

|                       |                           |                              |
|-----------------------|---------------------------|------------------------------|
|                       | Z axis                    | 3*0.85kw                     |
| <b>Boring blocks</b>  | Boring block qty          | Top 1; Bottom 1              |
|                       | Vert. drills qty (top)    | 18                           |
|                       | Horiz. drills qty (top)   | X: 3×3 + Y: 2×2              |
|                       | Vert. drills qty (Bottom) | 9                            |
|                       | Max drill diameter        | Φ35mm                        |
|                       | Drill spacing             | 32mm                         |
|                       | Rotation speed            | 4000rpm                      |
|                       | Shank diameter            | Φ10mm                        |
| <b>Main spindle</b>   | qty                       | ER25                         |
|                       | power                     | 3.5kw×1 max.18000rpm         |
|                       | Tool slot                 | 4 (ATC)                      |
|                       | Crosshead                 | 0-800mm process travel       |
| <b>Dust collector</b> | qty                       | 2                            |
|                       | diameter                  | Top 150mm×1<br>Lower 125mm×1 |
|                       | speed                     | ≥28m/min                     |