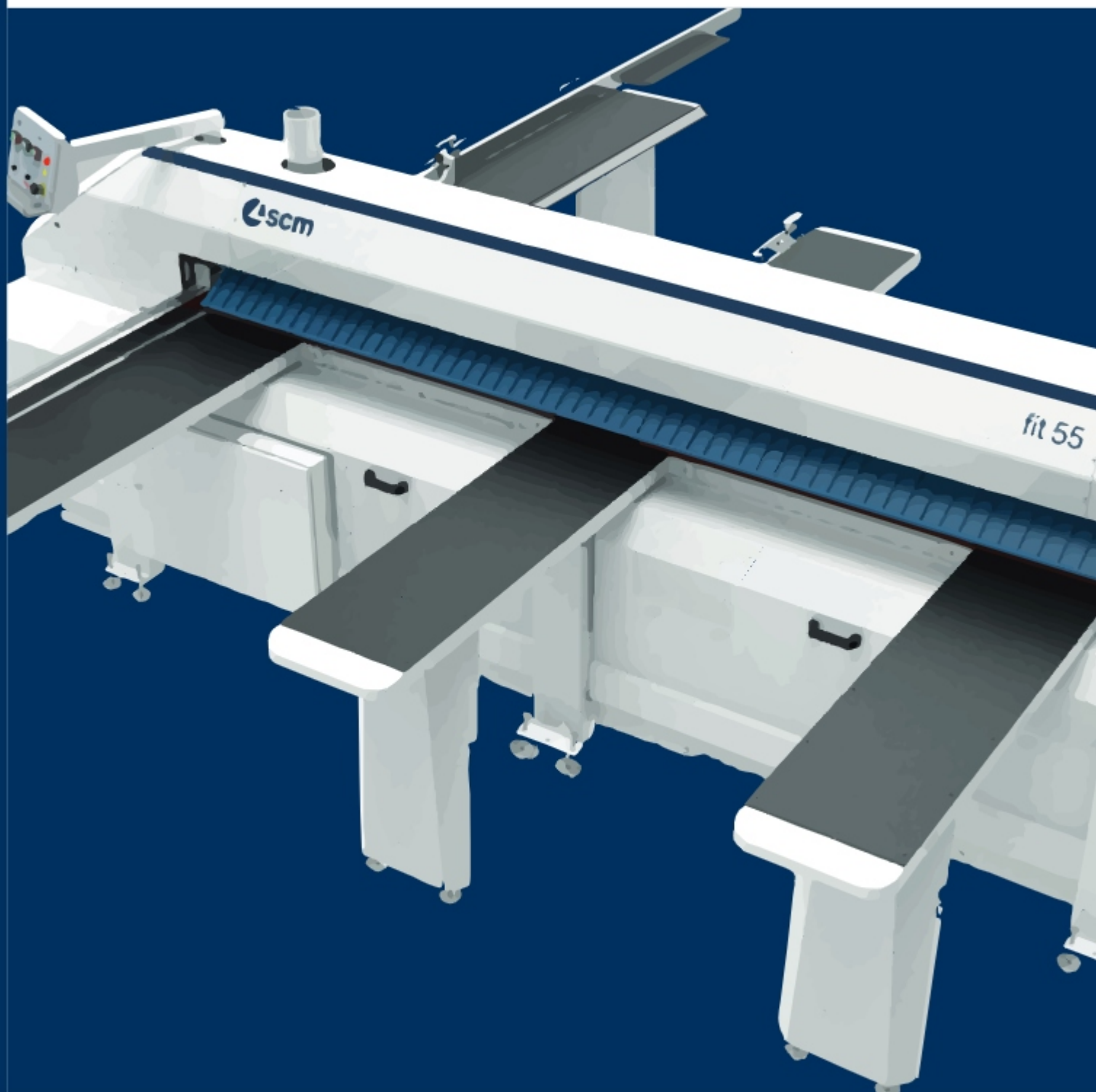


fit 55 / fit 70

manual horizontal beam saw



fit 55

compact and efficient

The fit 55 horizontal beam saw is a compact, high performance machine

Capable of cutting panels up to a thickness of 45mm or 3 panels with a 15mm overlap

A Frame that provides greater cutting accuracy

Rotary control panel, better ergonomics

Flexibility to work with diverse materials

Fit 55, best economic value in its class



fit 70

performance and technology

03

The fit 70 horizontal beam saw is a compact, high performance machine

Capable of cutting panels up to a thickness of 60mm or 4 panels with a 15mm overlap

A Frame that provides greater cutting accuracy

Rotary control panel, better ergonomics

Flexibility to work with diverse materials



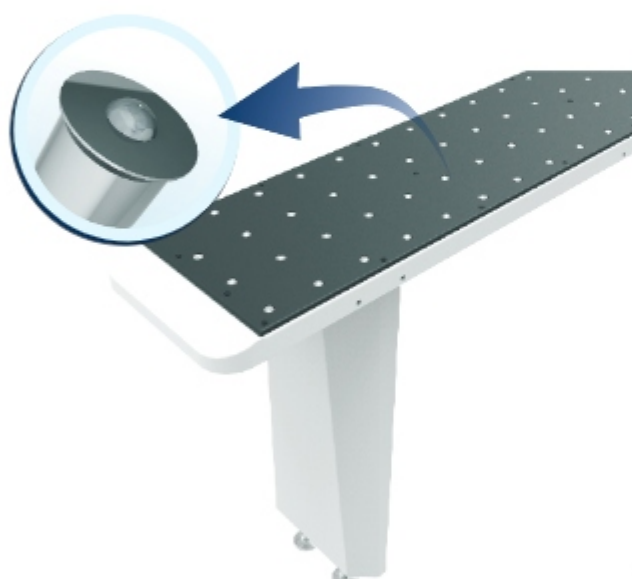
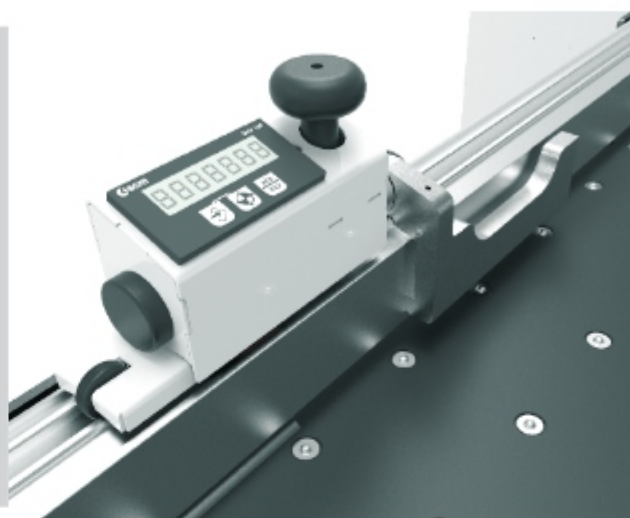
fit 55 / fit 70

speed and precision

Squaring fence with digital readout

Digital precision device for frame position display of the square guide, available for the front and rear square guide.

Position reading is done by means of a magnetic strip and fine adjustment for approximations.



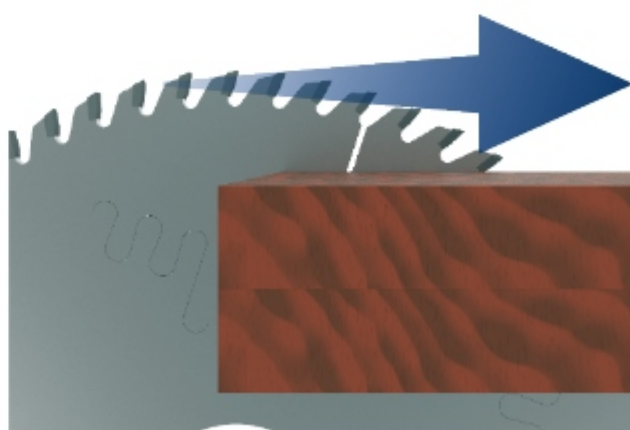
Air-floating table

This resource facilitates the handling and removal of the panels.

An air generator maintains a mattress of air under the material, reducing friction, which preserves the surface of the material and the planer work table.

Saw speed

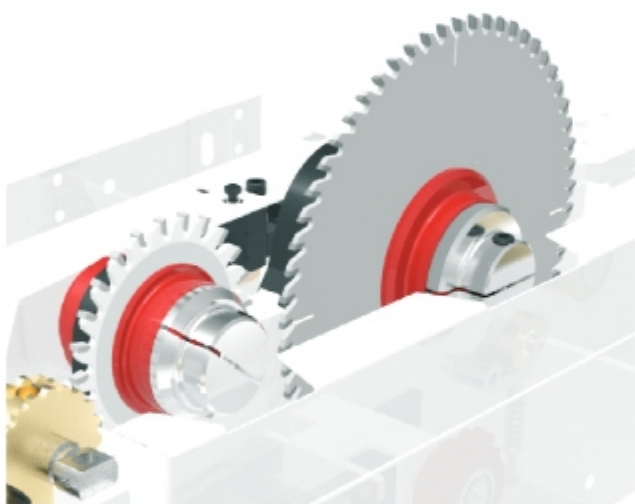
Quickly adjust saw speed, allowing for a better performance





◀ Rotating panel

Rotating panel makes it possible to work from both sides of the machine.

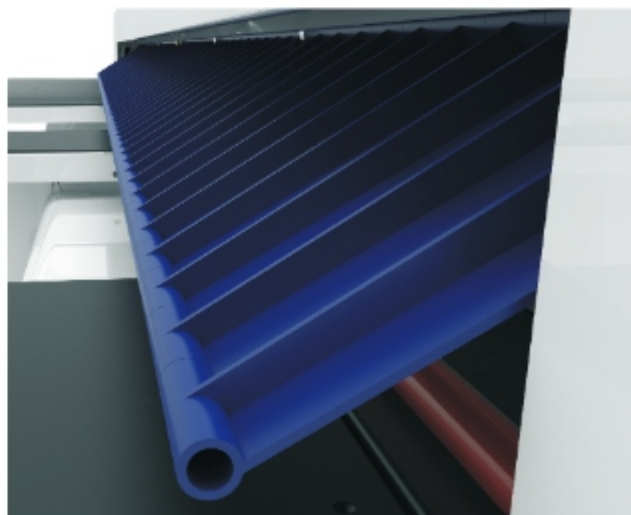


◀ Changing saws

Easy operating saw change system. It has an access cover for the saws with electromagnetic closure and security monitoring.

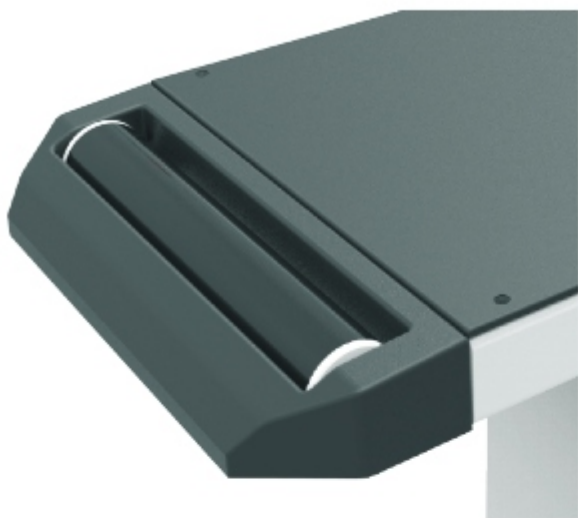
Safety shield ▶

Installed next to the press, it prevents the operator from coming into contact with cutting area during the work process.



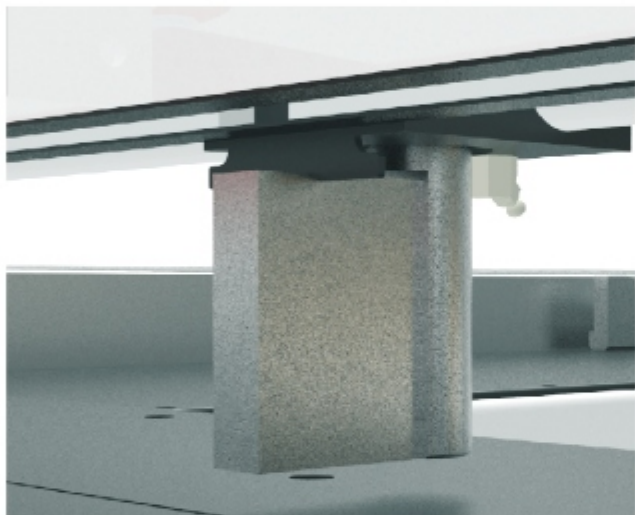
fit 55 / fit 70

versatility



◀ Input table with rollers (fit 70)

The rollers facilitates the loading process and prevents the possible risks that could result from this



◀ Top trimming (fit 70)

More agility with automatic positioning for panel trimming.

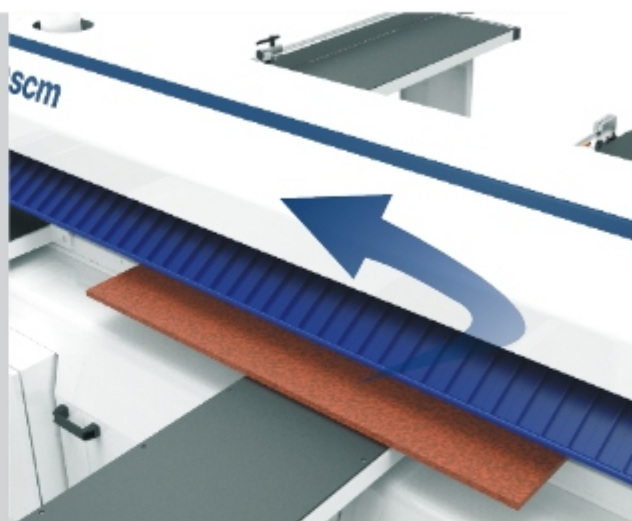
Manual positioner ▶

Manual positioning allows a greater number of cuts and dimensions and enables greater versatility through joining multiple cutting dimensions. Fast and accurate setup with digital indicator and measurement reader.



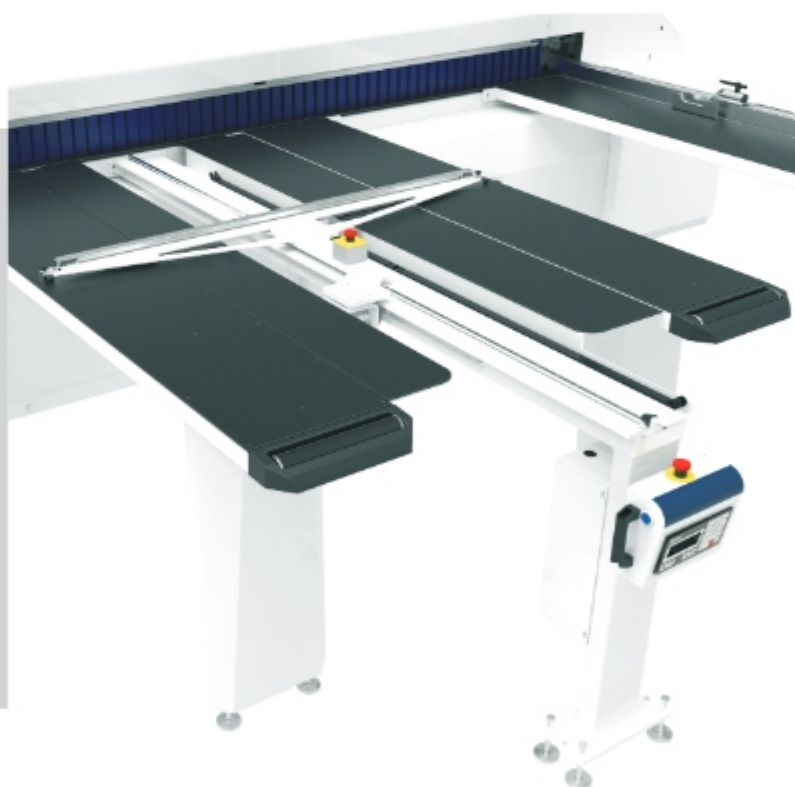
Return point

For cuts that do not use the entire cut width. The panel dividing saw fit takes into account the stopping points of the saw, in order to optimize the route from the saw car.



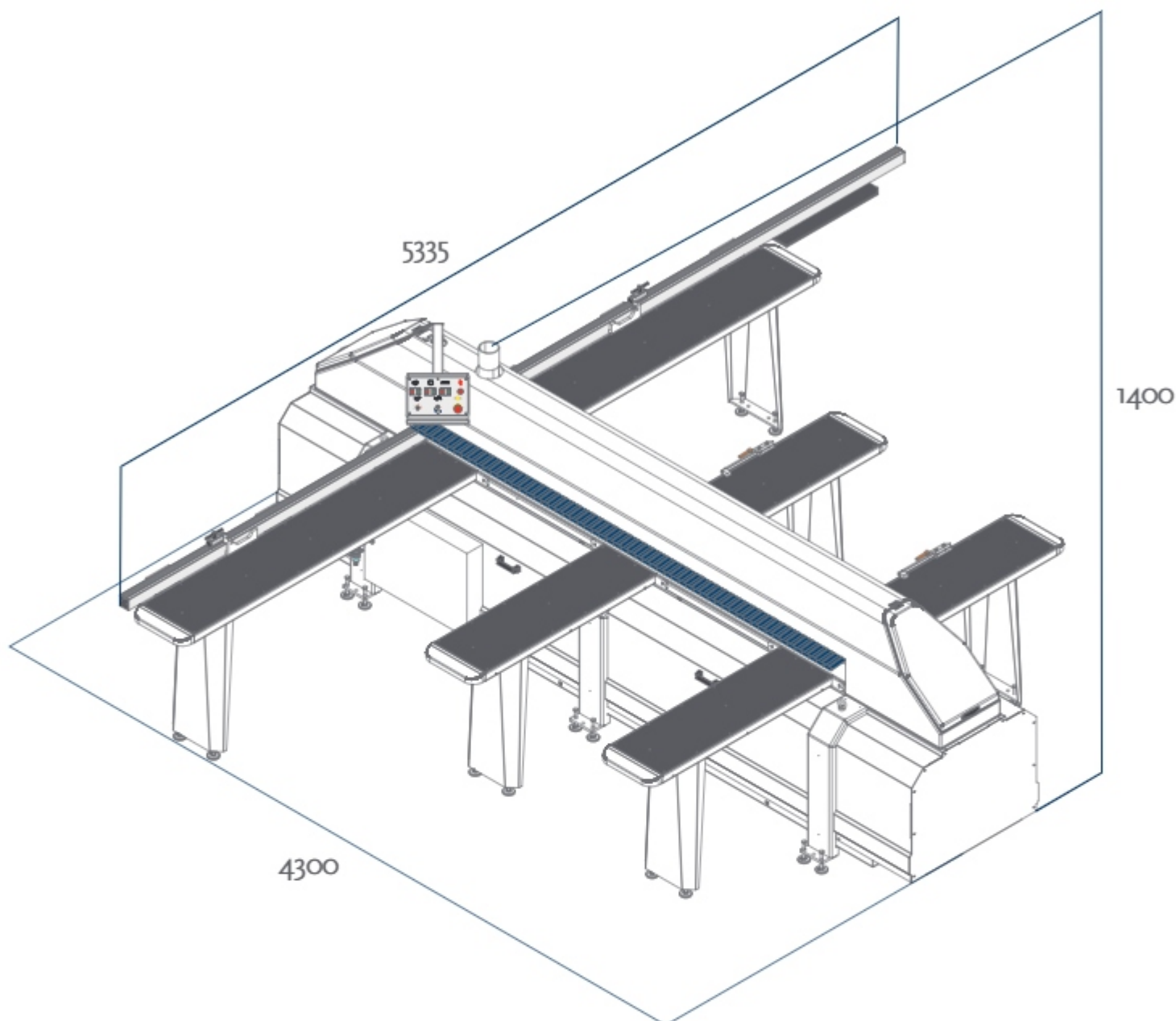
Electronic position

Automatic sheet positioner controlled by PLC provides greater agility in the positioning of parts with easy movement guaranteed by the use of the linear guide and heavy-duty structure.



fit 55

compact with high performance



FIT 55

Technical Data

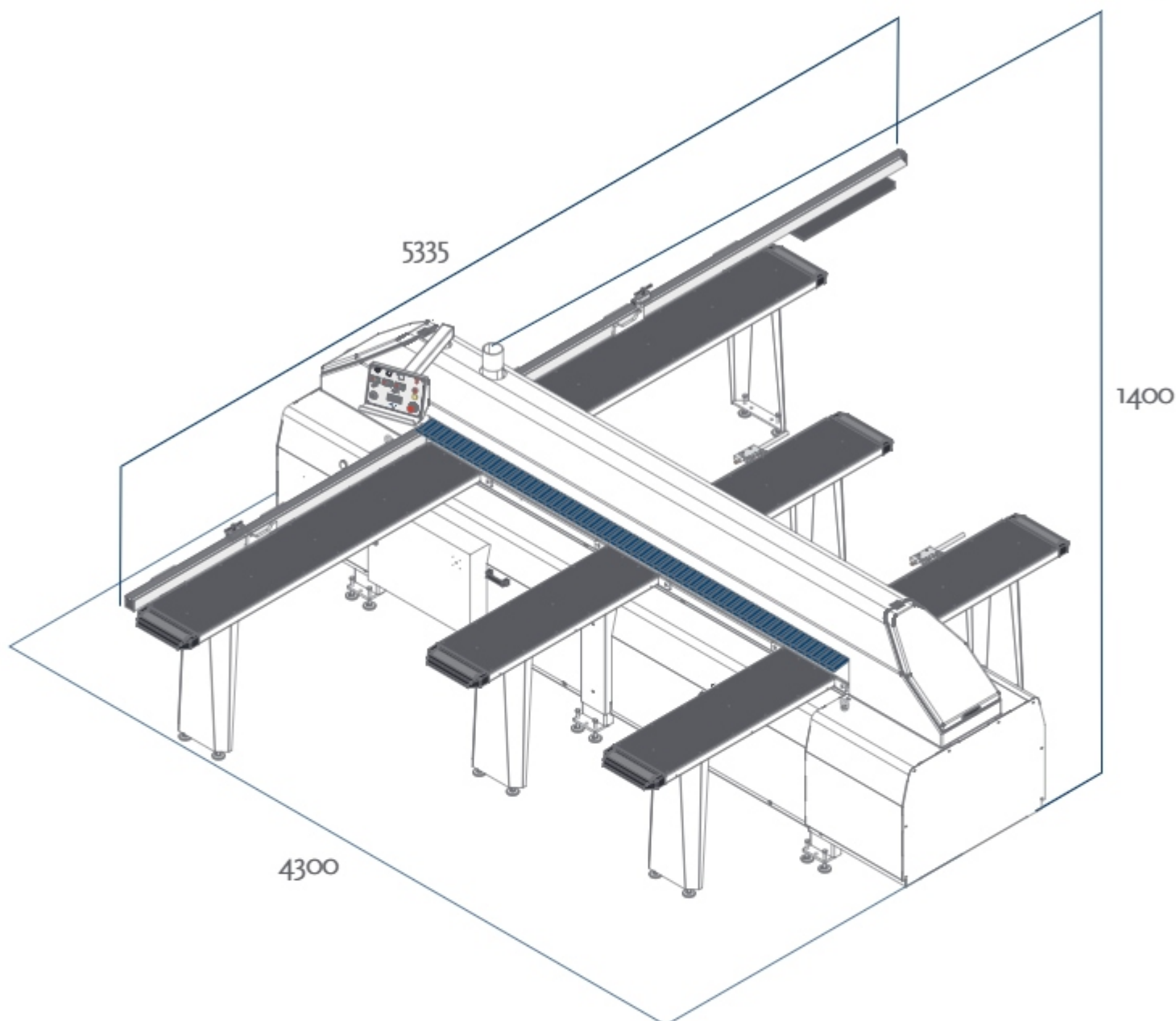
Saw blade projection	mm	55
Maximum cutting height	mm	45
Cutting length	mm	2900
Saw and bore diameter	mm	250/55
Scoring blade and bore diameter	mm	115/45
Saw motor power	cv	7,5
Scoring motor power	cv	0,75
Transverse motor power	cv	0,75
Saw carriage speed	m/min	10 to 30
Returning saw speed	m/min	30
2 fixed tables 90° 380 x 2000 mm		
4 support tables 380 x 1250mm		
Security bar		
Quick saw and scoring change		

*Technical data may change according to the version and configuration settings

fit 70

compact with high performance

09



FIT 70

Technical Data

Saw blade projection	mm	70
Maximum cutting height	mm	60
Cutting length	mm	2900
Saw and bore diameter	mm	290/55
Scoring blade and bore diameter	mm	115/45
Saw motor power	cv	7,5
Scoring motor power	cv	0,75
Transverse motor power	cv	0,75
Saw carriage speed	m/min	10 a 30
Returning saw speed	m/min	30
2 fixed tables 90° 380 x 2000 mm		
4 support tables 380 x 1250mm		
Security bar		
Quick saw and scoring change		

*Technical data may change according to the version and configuration settings

THE STRONGEST WOOD TECHNOLOGIES ARE IN OUR DNA

SCM. A HERITAGE OF SKILLS IN A UNIQUE BRAND

Over 65 years of success gives SCM the centre stage in woodworking technology. This heritage results from bringing together the best know-how in machining and systems for wood-based manufacturing. SCM is present all over the world, brought to you by the widest distribution network in the industry.

65 years history

3 main production sites in Italy

300.000 square metres of production space

17.000 machines manufactured per year

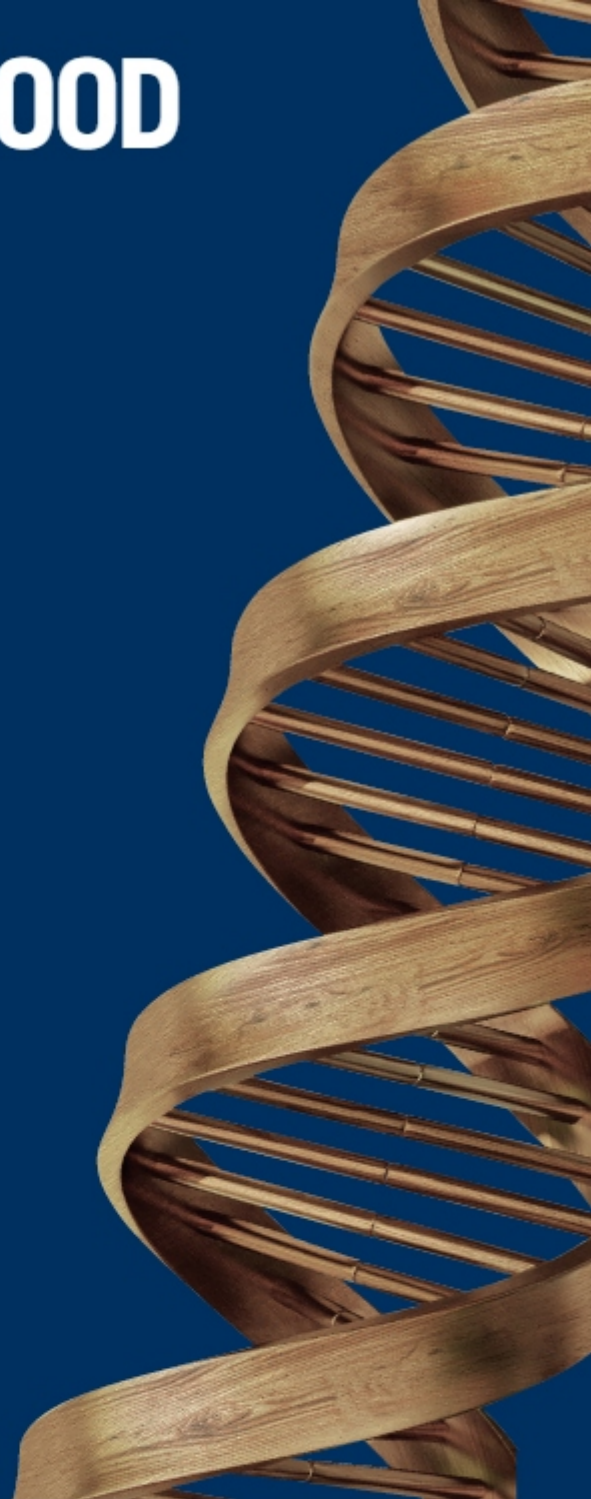
90% export

20 foreign branches

350 agents and dealers

500 support technicians

500 registered patents



In SCM's DNA also strength and solidity of a great Group. The SCM Group is a world leader, manufacturing industrial equipment and components for machining the widest range of materials.

SCM GROUP, A HIGHLY SKILLED TEAM EXPERT IN MACHINES AND INDUSTRIAL COMPONENTS

INDUSTRIAL MACHINERY

Stand-alone machines, integrated systems and services dedicated to processing a wide range of materials.



WOODWORKING
TECHNOLOGIES



TECHNOLOGIES FOR PROCESSING
COMPOSITE MATERIALS, ALUMINIUM,
PLASTIC, GLASS, STONE, METAL

INDUSTRIAL COMPONENTS

Technological components for the Group's machines and systems, for those of third-parties and the machinery industry.



SPINDLES AND TECHNOLOGICAL
COMPONENTS



ELECTRIC
PANELS



METALWORK



CAST IRON

Representatives

Largest network of representatives



Consult the largest **Network of Representatives** of national machines and imports, we attend the entire Brazilian nation and Mercosul



OPPORTUNITIES
www.scmwood.com
+55 (47) 3631-3500

TECHNICAL ASSISTANCE

Largest network of technical assistance



◀ Replacement parts

Always use genuine replacements parts to maintain the machine.
This way, you can continue to enjoy the productivity and quality that you have experienced.
Direct line to sale of spare parts: +55 (47) 3631-3550 / +55 (47) 3631-3527



◀ On-site technical assistance

We offer the largest technical assistance network in the industry.
Get in touch with our service center and request on-site assistance.



◀ Remote technical assistance

For greater agility in service, we have a highly qualified technical team in diagnosis and remote solutions.
More than 90% of open calls to our call center are solved remotely through our technical support team.

Customer Service Center: +55 (47) 3631 - 3553
E-mail: assistencia@tecmatic.com.br



is more



SCM GROUP TECMATIC MÁQUINAS E EQUIPAMENTOS LTDA
Rodovia Deputado Genésio Tureck - SC-418, 1477
Dona Francisca São Bento do Sul - SC - Brasil
tel. +55 (47) 3631-3500 - fax +55 (47) 3631-3501
marketing_br@scmgroup.com
www.scmwood.com