

# nova range

classical machines for the advanced joinery



# All “Made in SCM Italy”

*From casting iron to finished product.*

Come see our production plants and touch the quality of SCM machines;  
you will be our guest.







# APP Thundercut

Technology at your fingertips

SCM Thundercut is the Optimizer/Sequencer App for mobile devices that allows to optimize the panel surface and guides the operator through the cutting sequence.

**High cut speed execution, less material waste and mistake odds minimized, even for not skilled workers!**

Download it now from the AppStore and Google Play:

SCM Thundercut



You can manage your circular saws fleet, the material warehouse and many project you are working on.



The 3D sequencer, thanks to its simple and clear design, suggest the ideal settings of the machine for every single cut to be executed.



The App is available for circular saws, circular saws with movable blade unit, saw-shaper combination machines and universal combination machines (you will find the QR code to activate the App in each new machine).



# SCM CLASSICAL MACHINES, QUALITY EVEN MORE GUARANTEED

Since 1952, SCM has been leader in the design and production of woodworking machines.

We are getting closer to reach 70 years of company history by offering to our customers knowledge and advanced technologies that distinguish **L'invincibile, class** and **nova** classical machines. Different ranges united by the strength points: performance, ease-of-use and certified quality. We believe so much in the reliability of our machines to offer to our customers the possibility to have a **warranty extended up to 2 years\***. An extra peace of mind for small artisans workshops and joineries who see SCM as the ideal partner to grow their business.

To activate the 2-year warranty extension, it is compulsory to register on-line the machine on the website:

[scmwood.com/warranty-extension](http://scmwood.com/warranty-extension)

\*Check the models of machines that can take advantage of the initiative on the website:

[scmwood.com/joinery-machines](http://scmwood.com/joinery-machines)





# programmable circular saw nova si 400ep



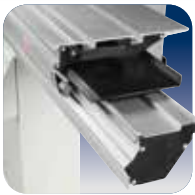
		nova si 400ep	nova si 400
Max. saw blade diameter <b>with installed scoring unit</b>	mm	400	400
Max. saw blade projection from the table at 90°/45°	mm	140/97	140/97
Saw blade rotating speed	rpm	3000/4000/5000	3700
Squaring stroke	mm	3200 ÷ 3800	3200 ÷ 3800
Cutting width on rip fence	mm	1000 ÷ 1500	1000 ÷ 1500
Three-phase motors power starting from	kW/Hz	7 (8) / 50 (60)	7 (8) / 50 (60)
Find the complete technical specification at page 16			



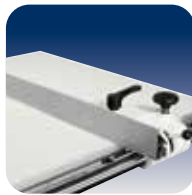
# manual circular saw nova si 400



**Saw Unit**  
sturdy structure



**Sliding Carriage**  
high cutting quality



**Rip Fence**  
rapidity and  
accuracy



**SCM  
Thundercut**  
Optimizer/  
Sequencer App

High construction quality for reliability  
and safe performance.



# manual circular saw nova si 300



		nova si 300	nova si 300s
Max. saw blade diameter <b>with installed scoring unit</b>	mm	315	315 ÷ 400
Max. saw blade projection from the table at 90°/45°	mm	100/70	100/70 (with 315 mm blade) 140/97 (with 400 mm blade)
Saw blade rotating speed	rpm	4000	4000 (with 315 mm blade) 3700 (with 400 mm blade)
Squaring stroke	mm	3200 ÷ 3800	1600
Cutting width on rip fence	mm	1000 ÷ 1500	1000 ÷ 1500
Three-phase motors power starting from	kW/Hz	5 (6) / 50 (60)	5 (6) / 50 (60) (with 315 mm blade) 7 (8) / 50 (60) (with 400 mm blade)

Find the complete technical specification at page 16

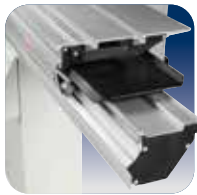




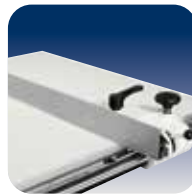
# manual circular saw nova si 300s



**Saw Unit**  
sturdy structure



**Sliding Carriage**  
high cutting quality



**Rip Fence**  
rapidity and  
accuracy



**SCM  
Thundercut  
Optimizer/  
Sequencer App**

Essential configuration with complete  
equipment to carry out professional machining.



# circular saws operating groups



## sturdy structure

### Saw Unit

The saw blade lifting is carried out by a strong cast-iron structure with sliding on ground round slideways which guarantee the **best accuracy**.

The unit tilting is carried out on cast-iron rotation sectors in a crescent shape to ensure reliability over time.

always user friendly and precise

### Handwheels on the machine front

Ease-of-use in every day operation due to the dedicated gear box (**SCM solution**), fully protected from dust, that provides a smooth and direct transmission.

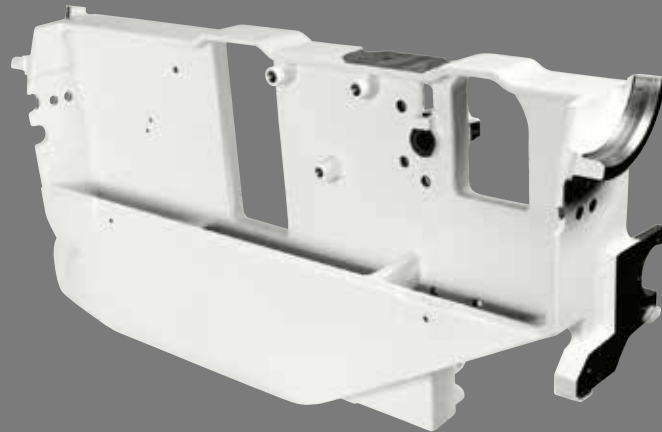
Every minimum hand-wheel movement corresponds to a precise blade adjustment.



## perfect cut

### Saw unit

Maximum torsional rigidity and the total absence of vibration through the closed loop structure of the saw unit which ensures **perfect alignment of the blades** during tilted and difficult cuts.



## simple and effective

### Scoring unit adjustment

Vertical and horizontal adjustments are carried out by user-friendly mechanical levers that operate directly making **precise and smooth movements**. The useful mechanical stops allow immediately finding of the set position. The positioning of the controls allows their use without moving from the front of the machine.





maximum cut quality guaranteed over time

#### Sliding carriage

The carriage will never require adjustment due to its closed reticular geometry with steel guides using an **exclusive method of mechanical fixing**.



reliability and technology without comparison  
10 years of SCM guarantee for the carriage sliding system.

smooth, rapid and  
precise positioning

#### Rip fence

Sliding of the rip fence support on round bar with micrometric adjustment.

The support can be also equipped with digital readout for fence position with detecting system on magnetic band (option). The fence can be easily excluded from the working area when it isn't used.



optimal support

#### Squaring frame and fence

Panel loading is easy on the large squaring frame with an idle roller at the end and the mobile cross beams offer an **optimal support** also to smaller panels. The telescopic squaring fence with the inclined metric scale and two reversible stops can be used to square panels measuring 3200x3800 mm and for tilted cuts at up to 45° on both sides of the frame.

# nova si 400ep

## electronic controls



the practical advantage for automatic control of the main positions

### Ready

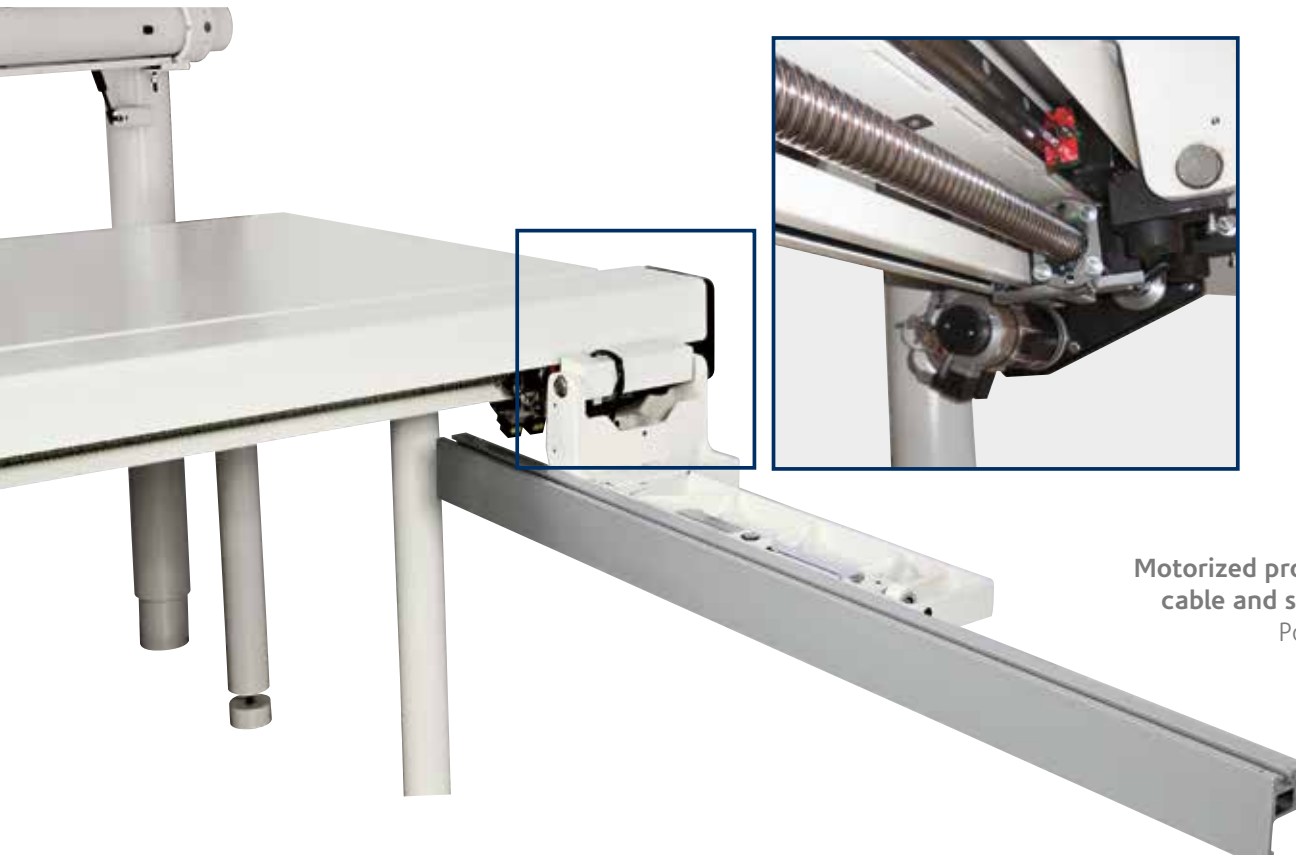
The **programming** of the work becomes **simple and effective** with the electronic control with a 4" LCD display.

- Working mode: manual, semi-automatic and automatic with a memory capacity of up to 99 programs
- Tool data setting with automatic height adjustment
- Calculator and hour counter

speed and accuracy

Motorised programmable rip fence mounted on a recirculating ball screw mechanism with sliding on linear guides.

*Only for Ready 3 UP Plus version*



Saw unit lifting



Saw unit tilting



Programmable rip fence (option)



Blade speed readout

practicality and safety

Motorized programmable rip fence with steel cable and sliding on sturdy round steel bar.

Position readout on magnetic band.

*Only for Ready 3 version*





# circular saws main optional devices

**Tablet holder on the  
sliding carriage**  
Compatible with  
tablets from  
8" to 11".



**Adjustable tablet  
holder positioned  
on the mobile  
control panel**  
Compatible with  
tablets from  
7" to 13".  
It is equipped with  
USB port for power  
supply positioned  
on the mobile  
control panel.

## Rip fence unit

The exclusive referencing system for the first trim cut  
allows the setting of trim quantity to be cut for every  
side **without any test cuts**.



## Angular cutting devices

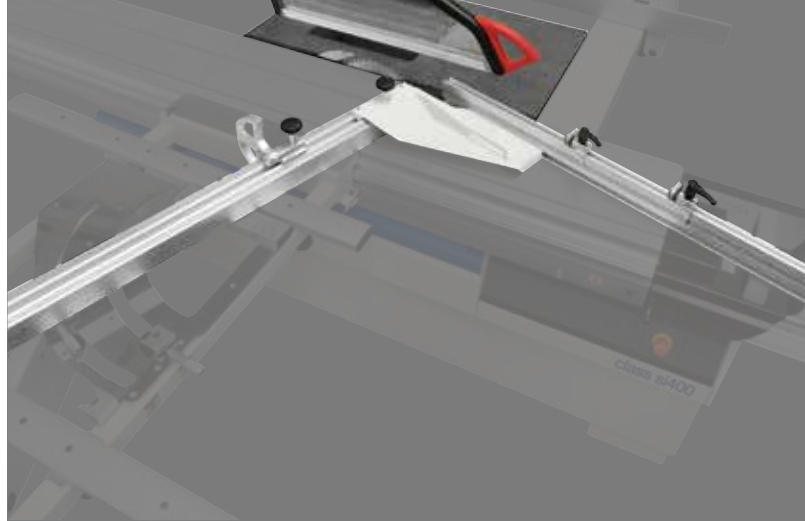
Available for the following versions

- a) traditional
- b) with automatic self-adjustment of the  
stops position in respect of the blade





# circular saws main optional devices



## Fence for complementary cutting

Device to be applied directly on the squaring rule that allows to quickly carry out cuts with angles complementary to the rule one.

**Squaring frame with "Compex" device** with automatic self-adjustment of stops position in respect of the blade and rule tilting angle. Furthermore, thanks to the dedicated frame structure, it is possible to carry out **tilted cuts keeping the squaring rule comfortably within the operator's reach**, both in acute cuts and in obtuse ones, without renouncing to a valid support of the piece.



## Mechanical preset for "DADO" machining

Possibility of using a tool (not included) to replace the main blade, with 203 mm maximum diameter and 20 mm maximum thickness.

## Electronic readouts on the squaring stops

The stops can be easily read even from distance.





#### Expandable scoring blade

Manually expandable with variable thickness from 2,8 to 3,6 mm. Blade diameter: 120 mm.



#### "LED indicating scoring unit in operation" device

When the scoring blade is working, the high efficiency LEDs clearly indicate the danger area, making the machine safer than ever.



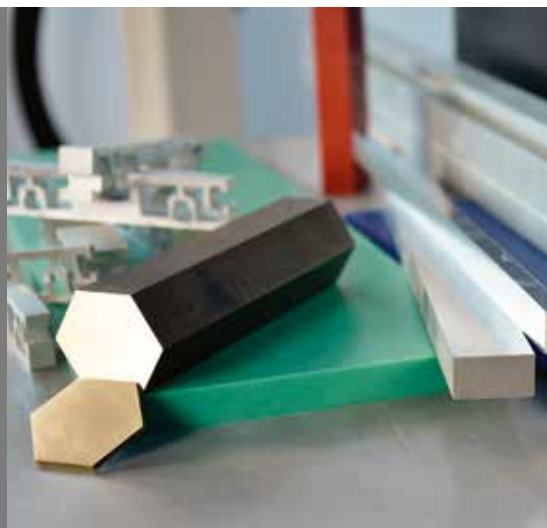
#### maximum practicality

##### Pushbuttons integrated in the sliding carriage

The possibility to start or stop the blades motors from the pushbuttons located at the ends of the carriage considerably helps when machining large dimensioned panels.



**Advanced materials machining**  
PVC and other plastic materials. Nylon, polycarbonate and other synthetic materials. Corian and other composite materials. Aluminium, brass and other light metals.

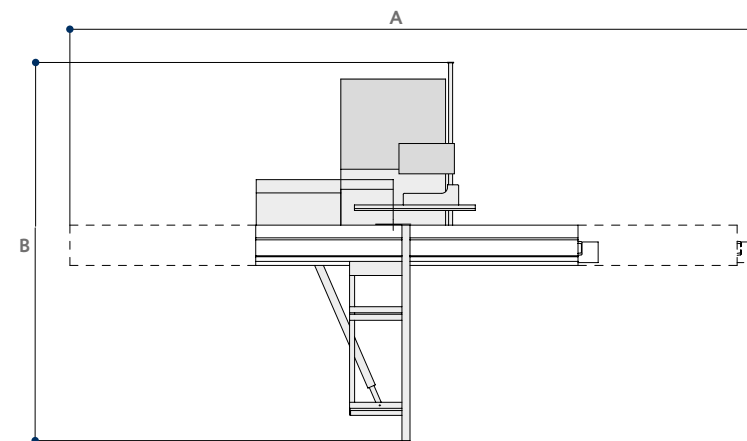


##### Device for the blade micro-lubrication

Compulsory for the machining of light alloys, extremely useful with particular plastic materials.

# circular saws technical data

S Standard  
O Option



TECHNICAL DATA		nova si 400ep	nova si 400	nova si 300	nova si 300s
Cast-iron saw table dimensions	mm	1040 x 630	1040 x 630	900 x 550	900 x 550
Blades tilting		90° ÷ 45°	90° ÷ 45°	90° ÷ 45°	90° ÷ 45°
Max. saw blade diameter <b>with installed scoring unit</b>	mm	400	400	315	315 ÷ 400
Max. saw blade projection from the table at 90°/45°	mm	140/70	140/97	100/97	100/70 (with 315 mm blade) 140/97 (with 400 mm blade)
Saw blade rotating speed	rpm	3000/4000/5000	3700	4000	4000 (with 315 mm blade) 3700 (with 400 mm blade)
Squaring stroke	mm	3200 ÷ 3800	3200 ÷ 3800	3200 ÷ 3800	1600
Cutting width on rip fence	mm	1000 ÷ 1500	1000 ÷ 1500	1000 ÷ 1500	1000 ÷ 1500
<b>other technical features</b>					
Three-phase motors 5 kW (6,6 hp) 50 Hz - 6 kW (8 hp) 60 Hz		-	-	S	S
Three-phase motors 7 kW (9,5 hp) 50 Hz - 8 kW (11 hp) 60 Hz		S	S	O	O
Three-phase motors 9 kW (12 hp) 50 Hz - 11 kW (15 hp) 60 Hz		O	O	-	-
Three-phase motors 14 kW (19 hp) 50 Hz - 14 kW (19 hp) 60 Hz		-	-	-	-
Exhaus hoods diameter:					
- at the base	mm	120	120	120	120
- on overhead protection	mm	80	80	80	80
- on riving knife	mm	-	60	60	60

OVERALL DIMENSIONS		nova si 400ep	nova si 400	nova si 300	nova si 300s
A with 1600 mm carriage	mm	-	-	-	3760
A with 3200 mm carriage	mm	7100	7100	7100	-
A with 3800 mm carriage	mm	8140	8140	8140	-
B with 1000 mm cutting width on rip fence	mm	4870	4870	4870	3115
B with 1270 mm cutting width on rip fence	mm	5155	5155	5155	3400
B with 1500 mm cutting width on rip fence	mm	5370	5370	5370	3615

MAIN OPTIONAL DEVICES	nova si 400ep	nova si 400	nova si 300	nova si 300s
"Ready 3" version	O	-	-	-
"Ready 3 UP" version	O	-	-	-
"Ready 3 UP Plus" version	O	-	-	-
"CUT 140" version	-	-	-	O
"SCM Thundercut" Optimizer/Sequencer App	S	S	S	S
Expandable scoring blade	O	O	O	O
Pushbuttons integrated in the sliding carriage	O	O	O	-
Squaring fence with LCD readouts for stops position	O	O	O	-
Fence for angular cutting on the sliding carriage	O	O	O	O
Fence for angular cutting with self-adjustment	O	O	O	O
Squaring frame with "Compex" device	O	O	O	-
Fence for complementary cutting	O	O	O	-
Fence for rip cutting on the sliding carriage	O	O	O	O
Electronic readout of parallel fence position	O	O	O	O
Adjustable tablet holder positioned on the mobile control panel	O	-	-	-
Tablet holder on the sliding carriage	O	O	O	O
"LED indicating scoring unit in operation" device	O	-	-	-
"DADO" machining	O	O	O	O
Machine configuration for advanced materials machining	O	O	O	O
Device for the blade micro-lubrication for the machining of plastic materials and light alloy	O	O	O	O
Overhead blades protection	S	S*	O	O

\* Standard for CE and USA-Canada versions; Option for NO CE version





# programmable circular saw nova si x

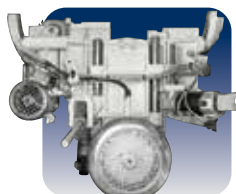


±46° double tilting blade.

		nova si x	nova si 40	nova si 30
Max. saw blade diameter <b>with installed scoring unit</b>	mm	400	400	315
Max. saw blade projection from the table at 90°/+45°/-45°	mm	136/97/60	136/97/-	90/70/-
Saw blade rotating speed	rpm	4000	4000	4000
Squaring stroke	mm	2600 ÷ 3200	2600 ÷ 3200	2600 ÷ 3200
Cutting width on rip fence	mm	1270	1270	1270
Three-phase motors power starting from	kW/Hz	7	5	5
<i>Find the complete technical specification at page 26</i>				



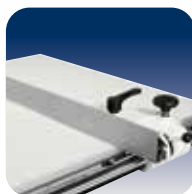
# manual circular saws nova si 40 nova si 30



**Saw Unit**  
sturdy structure



**Sliding Carriage**  
unrivalled cutting  
finishing



**Rip Fence**  
rapidity and  
accuracy



**SCM  
Thundercut**  
Optimizer/  
Sequencer App

Professional circular saws for  
uncompromising quality.

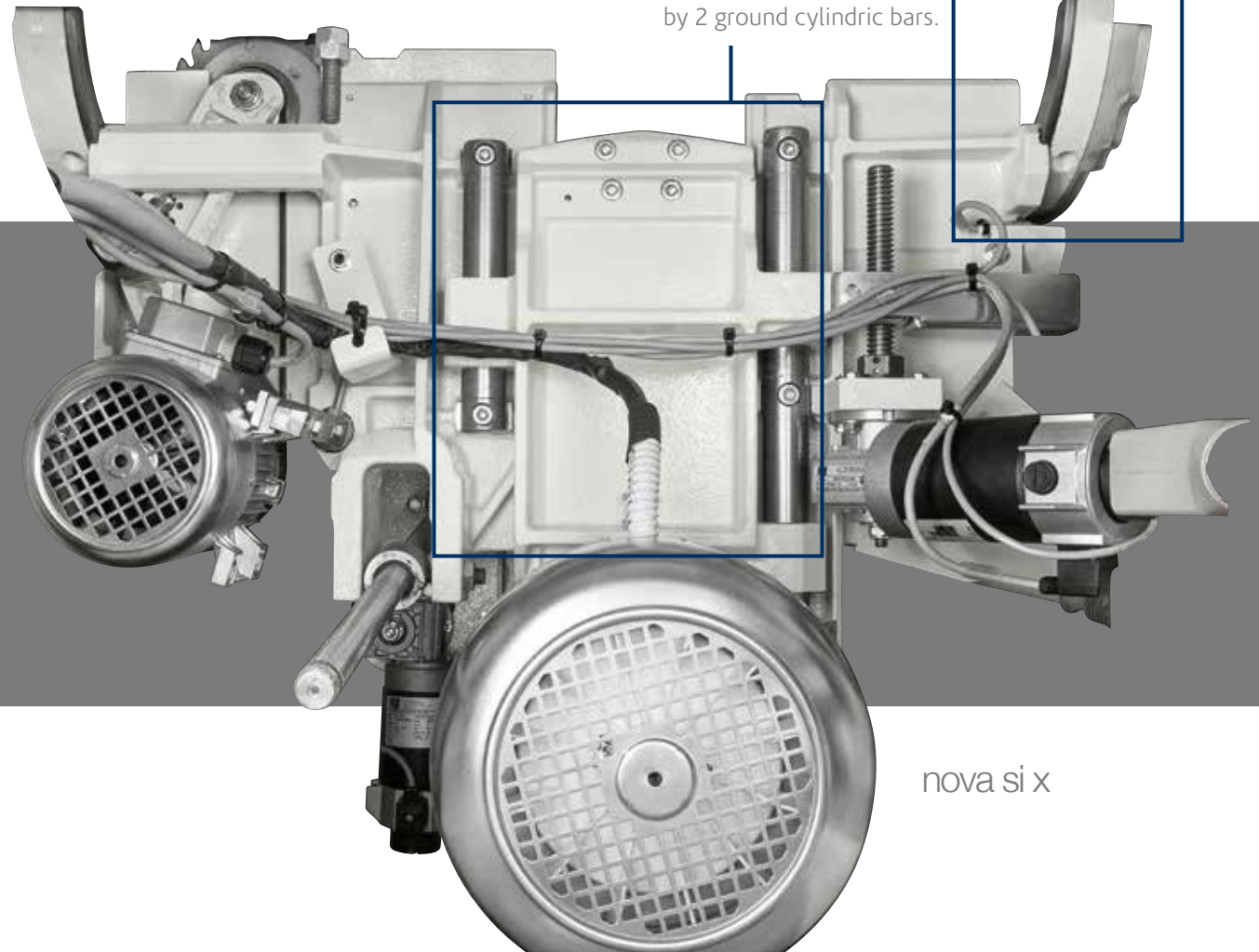
# circular saws operating groups



double tilting at  
everybody's reach

The  $\pm 46^\circ$  tilting of the  
unit is done by 2 wide  
semi-circular fences.

For *nova si x* the lifting  
of the blade unit is done  
by 2 ground cylindric bars.



sturdy structure

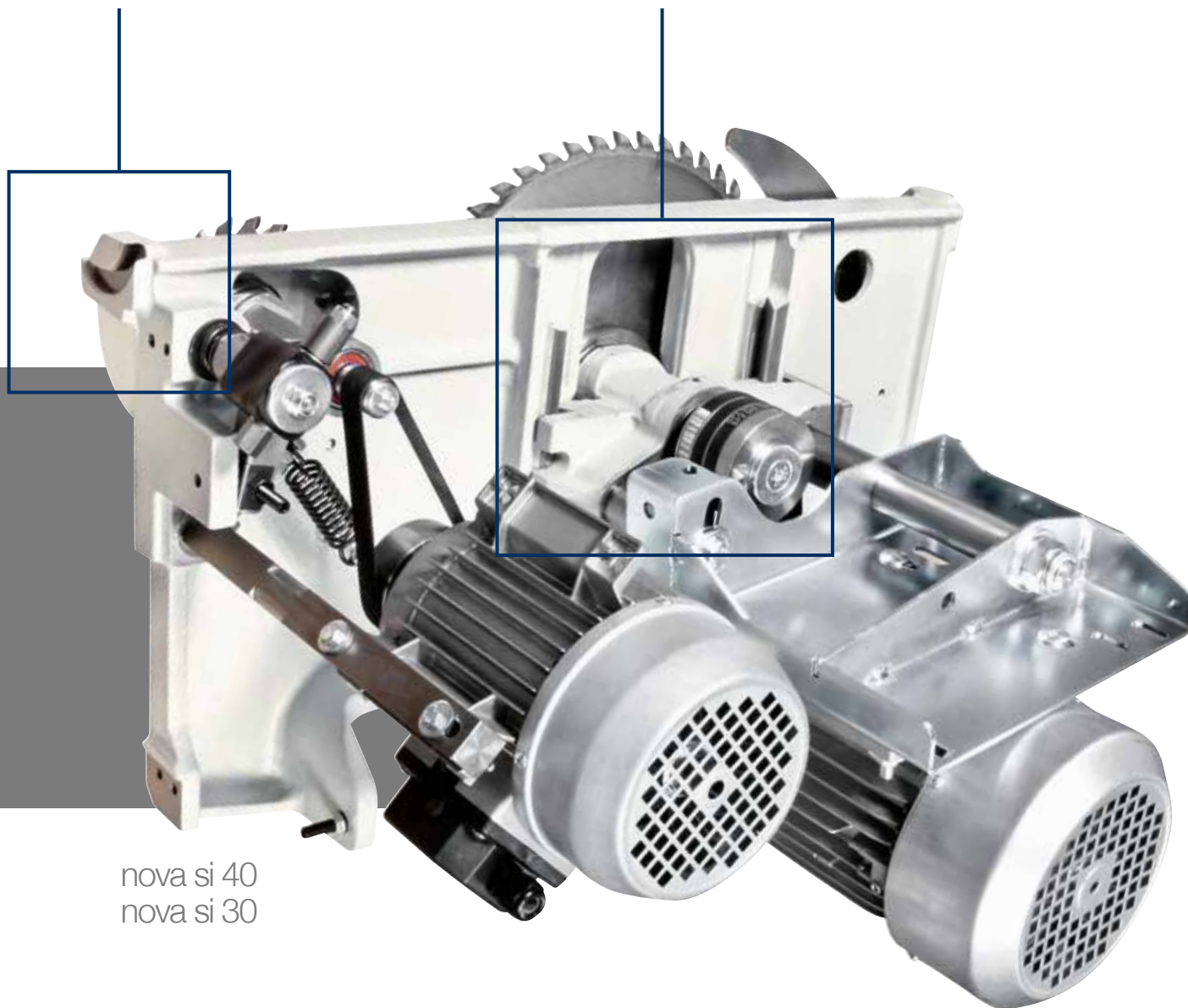
## Saw Unit

Saw units with a stiff cast-iron structure which can accommodate a blade of 400 mm diameter (315 mm for *nova si 30*) **with scoring blade installed**. They ensure a perfect and easy cutting of veneer panels and solid wood material with very high thickness. The saw blade uses 100% of the motor power, thanks to the scoring blade with an independent motor as standard.

nova si x

The rotation fulcrums of the saw unit have a 120 mm diameter and stand on steady crescent shaped rests that separate it from the base: a rigid reliable solution.

For *nova si 40* and *nova si 30*, the lifting of the blade unit is done by a robust cast iron structure with dovetail system.



nova si 40  
nova si 30



The scoring blade is adjustable from the outside without tools and allows fast and accurate positioning with no play.



# circular saws operating groups



unrivalled cutting finishing

## Sliding Carriage

Optimal support also to larger pieces, with the **new sliding table, 360 mm wide**.



Exceptional accuracy and smoothness to secure the guides it is not used glue, since the thickness could affect sliding. They are secured with a **procedure of aluminum riveting**.

reliability and technology without comparison  
10 years of SCM guarantee for the carriage sliding system.



**Two positions overhead blade protection**, for totally safe machining.  
(nova si x)

smooth, rapid and  
precise positioning

## Rip fence

Sliding of the rip fence support on round bar with micrometric adjustment.

The support can be also equipped with digital readout for fence position with detecting system on magnetic band (option). The fence can be easily excluded from the working area when it isn't used.



immediate control

## Squaring frame and fence

Panel loading is easy on the large squaring frame with an idle roller at the end.

**The telescopic squaring fence with the inclined metric scale and two reversible stops** can be used to square panels measuring 3200x3200 mm and for tilted cuts at up to 45° on both sides of the frame.

# circular saws optional electronic controls

simple and quick

## Programmed movement

The "Ready" control manages the powered and programmed movement of the saw blade unit increasing productivity and working quality.  
(standard for nova si x)



## Ready 3 / Ready 3 UP

**Automatic positioning of the parallel fence,** from "Ready" control (3 axes). Programmed or manual fence movement with a hold-down drive for the maximum versatility.

**In addition, the Ready 3 UP version has the control on the mobile control panel.**



**Powered handling of the operating groups with digital readouts**  
For the best accuracy and easy to use.



maximum practicality

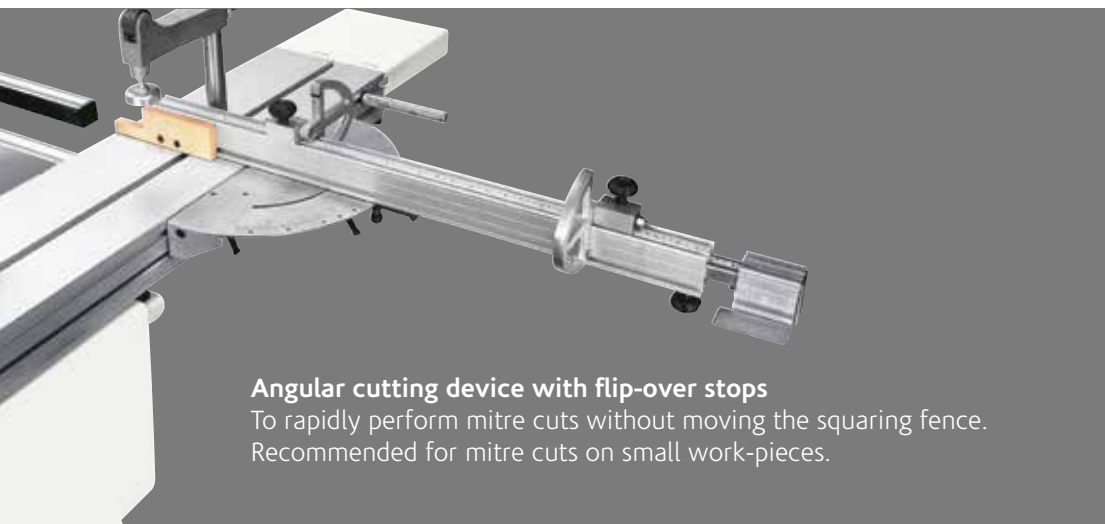
## Pushbuttons integrated in the sliding carriage

The possibility to start or stop the blades motors from the pushbuttons located at the ends of the carriage **considerably helps when machining large dimensioned panels.**



# circular saws main optional devices

**Squaring frame with "Compex" device**  
with automatic self-adjustment of stops position  
in respect of the blade and rule tilting angle.  
Furthermore, thanks to the dedicated frame structure,  
it is possible to carry out **tilted cuts keeping the  
squaring rule comfortably within the operator's  
reach**, both in acute cuts and in obtuse ones, without  
renouncing to a valid support of the piece.



**Angular cutting device with flip-over stops**  
To rapidly perform mitre cuts without moving the squaring fence.  
Recommended for mitre cuts on small work-pieces.



**Electronic readouts on  
the squaring stops**  
The stops can be easily read  
even from distance.

**Pre-set angular cutting  
device directly positioned  
on squaring frame**  
To find rapidly the most  
common angles with the  
squaring fence. Useful for  
large work-pieces.



**Additional table on the sliding carriage**  
For the support of large dimensioned panels.





**Digital readout for the fence position on the parallel fence**  
It allows precise positioning with the magnetic strip sensor.



**Mechanical preset for "DADO" machining**  
Possibility of using a tool (not included) to replace the main blade.



**Expandable scoring blade**  
Manually expandable with variable thickness:  
- from 3,5 to 4,5 mm (blade diameter: 160 mm) *nova si x*  
- from 2,8 to 3,6 mm (blade diameter: 120 mm) *nova si 40* and *nova si 30*



**Device for the blade micro-lubrication**  
Compulsory for the machining of light alloys, extremely useful with particular plastic materials.



**Tablet holder on the sliding carriage**  
Compatible with tablets from 8" to 11".

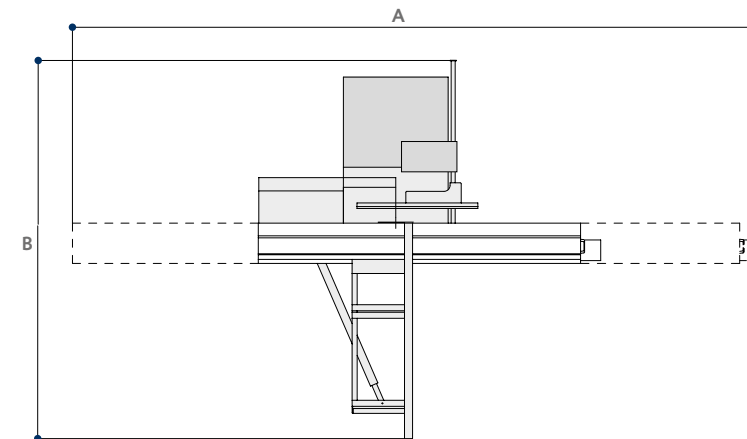


**Adjustable tablet holder positioned on the mobile control panel**  
Compatible with tablets from 7" to 13".  
It is equipped with USB port for power supply positioned on the mobile control panel.



# circular saws technical data

S Standard  
O Option



TECHNICAL DATA		nova si x	nova si 40	nova si 30
Cast-iron saw table dimensions	mm	1000 x 685	940 x 560	940 x 560
Blades tilting		-46° ÷ +46°	90° ÷ 45°	90° ÷ 45°
Max. saw blade diameter <b>with installed scoring unit</b>	mm	400	400	315
Max. saw blade projection from the table at 90°/+45°/-45°	mm	136/97/60	136/97/-	90/70/-
Saw blade rotating speed	rpm	4000	4000	4000
Squaring stroke	mm	2600 ÷ 3200	2600 ÷ 3200	2600 ÷ 3200
Cutting width on rip fence	mm	1270	1270	1270
<b>other technical features</b>				
Three-phase motors 5 kW (6,6 hp) 50 Hz - 6 kW (8 hp) 60 Hz		-	S	S
Three-phase motors 7 kW (9,5 hp) 50 Hz - 8 kW (11 hp) 60 Hz		S	O	O
Exhaus hoods diameter:				
- at the base	mm	120	120	120
- on overhead protection	mm	80	80	80
- on riving knife	mm	-	60	60

OVERALL DIMENSIONS		nova si x	nova si 40	nova si 30
A with 2600 mm carriage	mm	5860	5860	5860
A with 3200 mm carriage	mm	7060	7060	7060
B with manual rip fence	mm	3650	3650	3650
B with automatic rip fence	mm	4820	4820	4820

MAIN OPTIONAL DEVICES		nova si x	nova si 40	nova si 30
"Ready 3" version / Programmed parallel fence		O	O	-
"Ready 3 UP" version		O	O	-
"SCM Thundercut" Optimizer/Sequencer App		S	S	S
Powered handling of the operating groups with digital readouts		-	O	O
Pushbuttons integrated in the sliding carriage		O	O	O
N.2 sawblades speeds (3500/5000 rpm)		O	O	-
Electronic readouts on the squaring stops		O	O	O
Angular cutting device with flip-over stops		O	O	O
Pre-set angular cutting device directly positioned on squaring frame		O	O	O
Squaring frame with "Compex" device		O	O	O
Additional table on the sliding carriage		O	O	O
Digital readout for the fence position on the parallel fence		O	O	O
Adjustable tablet holder positioned on the mobile control panel		O	O	-
Tablet holder on the sliding carriage		O	O	O
Device for the blade micro-lubrication for the machining of plastic materials and light alloy		-	O	-
"DADO" machining		O	O	O**
Overhead blades protection		S	O*	O

\* Standard for CE and USA-Canada versions; Option for NO CE version

\*\* Not available for CE version

# PROMPT AND EXPERT TECHNICAL SUPPORT THROUGH A NETWORK OF 1000 TECHNICIANS AND AN INVENTORY OF 36,000 SPARE PARTS.

HIGHLY SPECIALISED TECHNICIANS, EFFICIENT  
MANAGEMENT AND 6 SPARE PARTS BRANCHES  
AROUND THE WORLD GUARANTEE A CLOSE,  
SAFE AND EFFECTIVE TECHNICAL SUPPORT.

## SERVICE

SCM provides a service that goes beyond the purchase, to guarantee the long term performance of your technological production system and peace of mind for your business.

### A COMPLETE RANGE OF AFTER-SALES SERVICES

- installation and start-up of machines, cells, lines and systems
- tailored training programs
- telephone support to reduce times and costs when machines are not working
- preventive maintenance programs to guarantee long term performance
- complete renovation of machines and plants to renew the added value of the investments
- custom upgrading to update machines and plants and meet new production requirements



## SPARE PARTS

SCM Group can count on 140 spare parts professionals worldwide to meet any request with real time shipments.



### 36,000 SPARE PARTS

Our spare parts inventory, with a value of 12 million euros, covers every single machine



### SPARE PARTS GUARANTEED

We guarantee also hard to find parts, with 3,5 million euros invested in "critical" spare parts.



### IMMEDIATE AVAILABILITY

Over 90% of orders received are carried out the same day thanks to the huge inventory available.



### 6 BRANCHES AROUND THE WORLD

The spare parts service can count on worldwide support (Rimini, Singapore, Shenzhen, Moscow, Atlanta, São Bento do Sul)



### 500 SHIPMENTS A DAY



# THE STRONGEST WOOD TECHNOLOGIES ARE IN OUR DNA

## SCM. A HERITAGE OF SKILLS IN A UNIQUE BRAND

Over 65 years of success gives SCM the centre stage in woodworking technology. This heritage results from bringing together the best know-how in machining and systems for wood-based manufacturing. SCM is present all over the world, brought to you by the widest distribution network in the industry.

**65+** years history

**3** main production sites in Italy

**300.000** square metres of production space

**20.000** machines manufactured per year

**90%** export

**20** foreign branches

**400** agents and dealers

**500** support technicians

**500** registered patents

In SCM's DNA also strength and solidity of a great Group. The SCM Group is a world leader, manufacturing industrial equipment and components for machining the widest range of materials.

## SCM GROUP, A HIGHLY SKILLED TEAM EXPERT IN INDUSTRIAL MACHINES AND COMPONENTS

### INDUSTRIAL MACHINERY

Stand-alone machines, integrated systems and services dedicated to processing a wide range of materials.



WOODWORKING  
TECHNOLOGIES



TECHNOLOGIES FOR PROCESSING  
COMPOSITE MATERIALS, ALUMINIUM,  
PLASTIC, GLASS, STONE, METAL

### INDUSTRIAL COMPONENTS

Technological components for the Group's machines and systems, for those of third-parties and the machinery industry.



SPINDLES AND TECHNOLOGICAL  
COMPONENTS



ELECTRIC PANELS



METALWORK



CAST IRON





**SCM GROUP SPA**

via Casale 450 - 47826 Villa Verucchio, Rimini - Italy  
tel. +39 0541 674111 - fax +39 0541 674274  
scm@scmgroup.com  
www.scmwood.com



00L0592603G