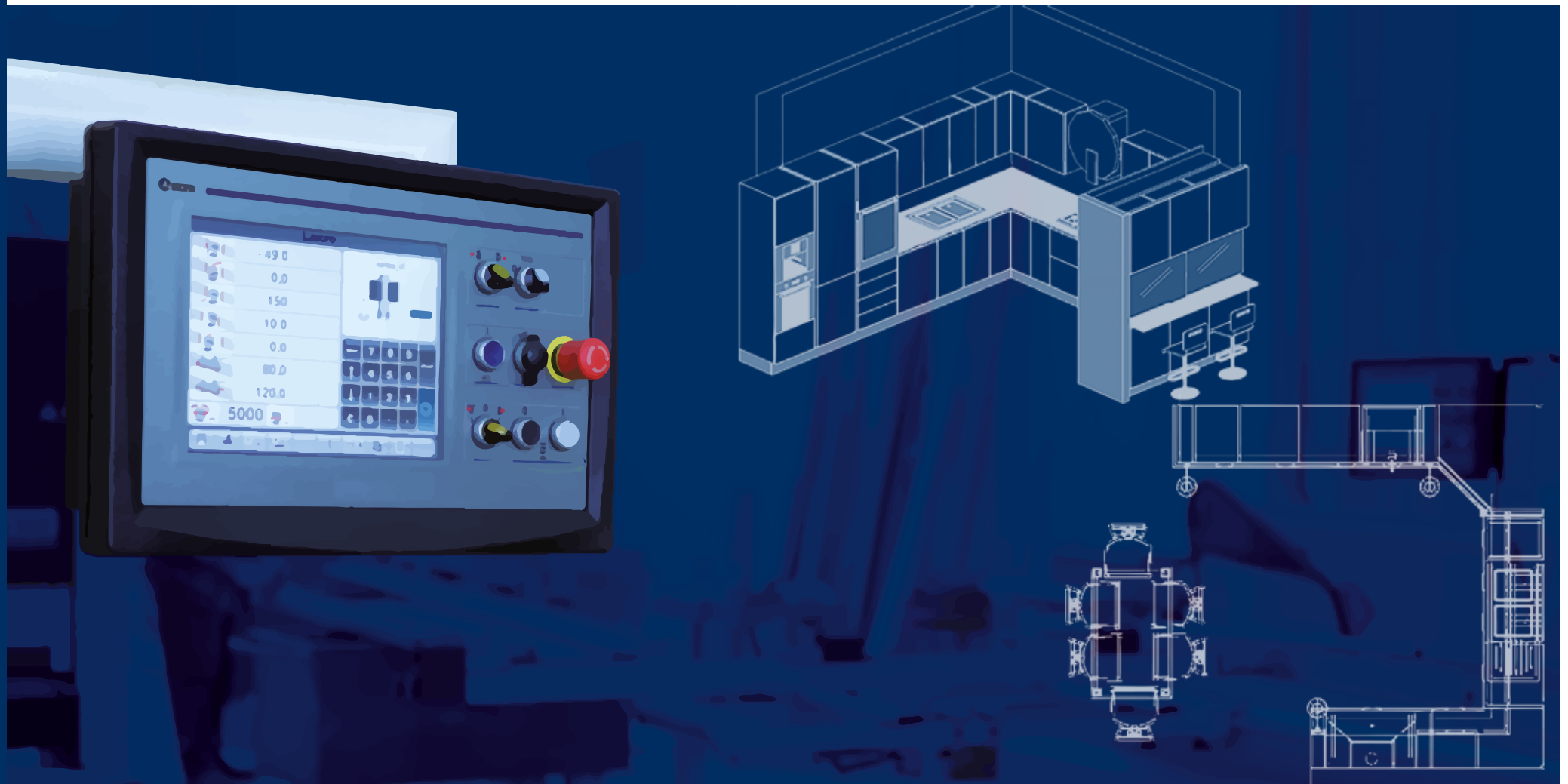
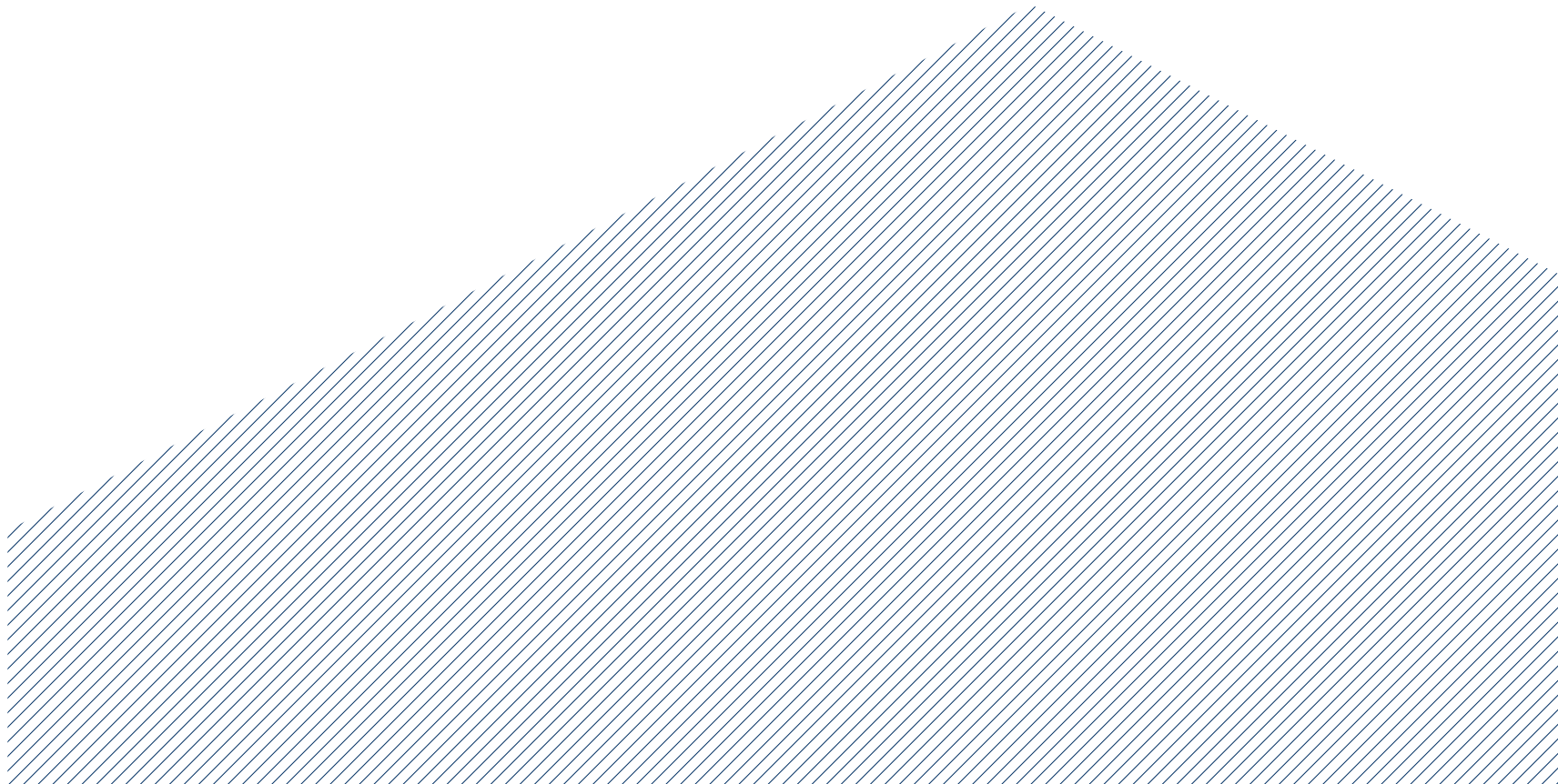


nova class profiset startech

Four complete machines lines for the advanced joinery









All "Made in SCM Italy"
From casting iron to finished product.

Come see our production plants and touch the quality of SCM
machines; you will be our guest.



nova class profiset startech lines

The widest range of machines
for the advanced joinery

SCM's objective is to guarantee customers high quality technologies which meet their requirements in such a way as to make SCM the partner for any needs.

surface
planers
class f 520
class f 410
nova f 520
nova f 410

thicknessing
planers
class s 630
class s 520
nova s 630
nova s 520

surfacing-thicknessing
planers
nova fs 520
nova fs 410

planers

The wide range of planers available
on the market.

class

The best solution
for every application.

nova

Guaranteed quality
at your fingertips.

surface planers

class f 520

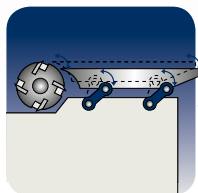
class f 410

nova f 520

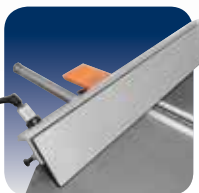
nova f 410



		class f 520	class f 410	nova f 520	nova f 410
Working width	mm	520	410	520	410
Cutterblock diameter (standard knives)	mm/no.	120/4	120/4	120/4	120/4
Max. stock removal	mm	8	8	8	8
Total work tables length	mm	2750	2610	2750	2610
Three-phase motors starting from	kW/Hz	5 (6) / 50 (60)	5 (6) / 50 (60)	5 (6) / 50 (60)	5 (6) / 50 (60)
<i>Find the complete technical specification at page 36</i>					



**Feeding
on Connecting Rods**
constant precision



Surface Fence
high rigidity



Integrated Protection
ergonomics and safety

Perfect surfaces, practical
and safe, ergonomics.

thicknessing planers

class s 630

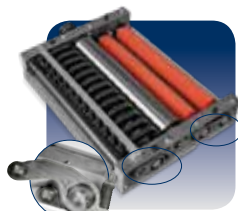
class s 520

nova s 630

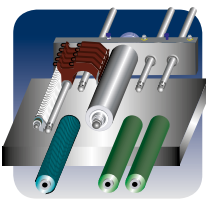
nova s 520



		class s 630	class s 520	nova s 630	nova s 520
Working width	mm	630	520	630	520
Cutterblock diameter (standard knives)	mm/no.	120/4	120/4	120/4	120/4
Max. stock removal	mm	8	8	8	8
Feed speed on thicknesser	m/min	4 ÷ 20	4 ÷ 20	5/8/12/18	5/8/12/18
Min. ÷ max. working height on thicknesser	mm	3,5 ÷ 300	3,5 ÷ 300	3,5 ÷ 300	3,5 ÷ 300
Three-phase motors starting from	kW/Hz	7 (8) / 50 (60)	7 (8) / 50 (60)	7 (8) / 50 (60)	7 (8) / 50 (60)
<i>Find the complete technical specification at page 36</i>					



**Rollers on
Connecting Rods**
perfect finish



**Interchangeable
Rollers**
for every
requirement



SCM Spindle
simple and rapid

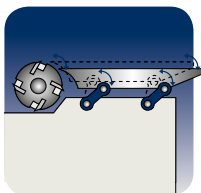
Easy to use and precise, stylish with practical design, a wider range of applications.

surfacing-thicknessing planers

nova fs 520
nova fs 410



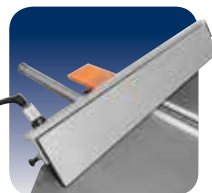
		nova fs 520	nova fs 410
Working width	mm	520	410
Cutterblock diameter (standard knives)	mm/no.	120/4	95/4
Total work tables length	mm	2250	2200
Min. ÷ max. working height on thicknesser	mm	3,5 ÷ 240	3,5 ÷ 240
Three-phase motors starting from	kW/Hz	7 (8) / 50 (60)	5 (6) / 50 (60)
<i>Find the complete technical specification at page 36</i>			



**Feeding
on Connecting Rods**
constant precision



Thickening Table
rigidity and
precision



Surface Fence
high rigidity

Easy and rapid to use with great performance
in a limited space.

planers operating units

absolute rigidity

Surface fence

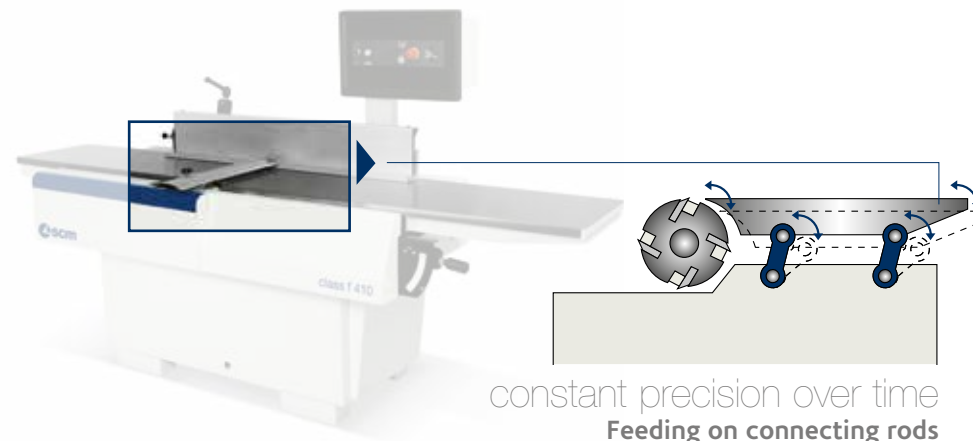
High rigid fence with a smooth movement thanks to the **central locking on round bar**. The graduated scale facilitates the operator in positioning the guide to the required tilting.



a guarantee of
perfect planarity

Simultaneous raising of the work tables

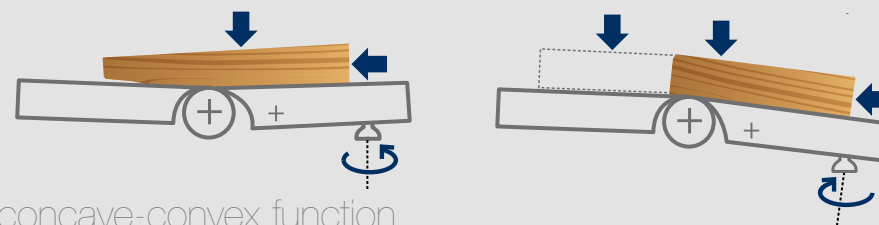
The system allows the **changeover from planer to thicknesser** with a single movement ensuring working rapidity and precision.



constant precision over time

Feeding on connecting rods

Very accurate machining with the movement of the infeed table by means of a parallelogram **kinetic mechanism** which **always gives the same distance between the cutterblock and the table**. The system operating directly on the connecting rods avoids any exertion to the table assuring constant planarity over time.



concave-convex function

Perfect joints every time

The available settings allow **perfect bonding** of the components giving excellent coupling and eliminating any joint line. (class)



perfect finish

Feeding rollers on connecting rods

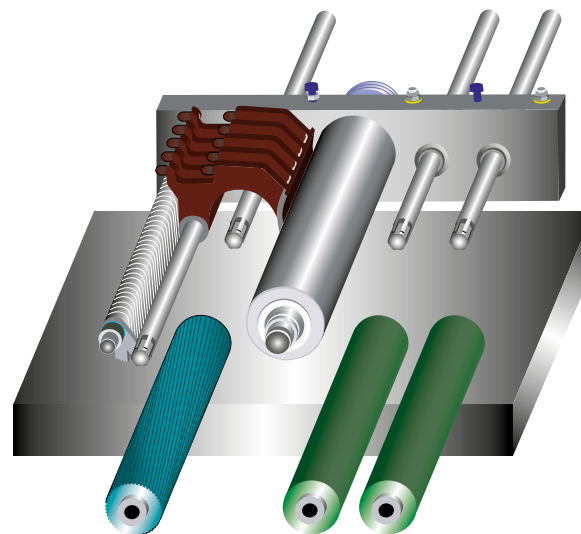
The stopping of the work piece and the presence of notches on its surface are eliminated due to the movement system on all three rollers, that allows their vertical displacement by rotation and the **best linear feeding**. Perfect surfaces and high feeding performance with the standard rubber rollers.



Easy and rapid in use

SCM cutterblock

The cutter block is made from a single block of steel ensuring complete stability even under heavy dynamic loads.



one machine for every requirement

Interchangeable rollers

Perfect finish obtained by quick and easy changeover of the rollers that allows the operator to configure the machine drive function in case of special requirements, such as a minimum removal of fine wood and/or batches where multiple pieces of different thicknesses are processed.

(Third powered for nova thickening planers available as option).

Powered work table lifting with micrometric adjustment.
(With digital readout for class planers)

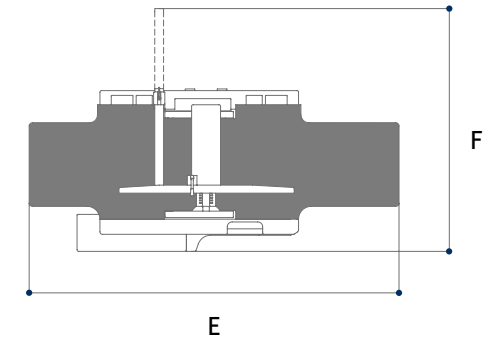
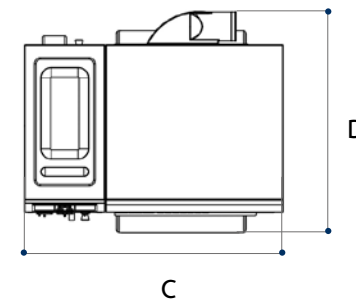
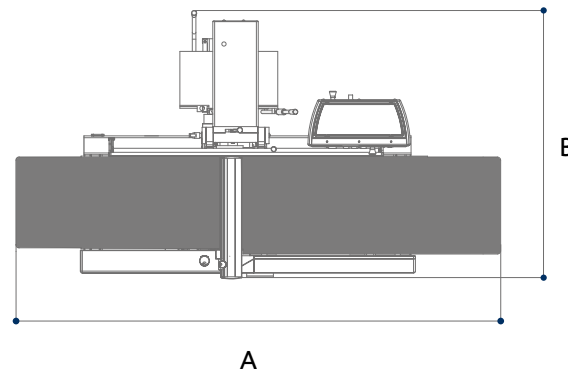
Feed speed controlled by inverter from control panel and dedicated warning light to indicate to higher speed.
(class)

The 4 screws with a large diameter combined with the 2 side linear guides ensure worktable stability. The integrated protections guarantee high precision and reliability over time.

Pneumatic load adjustment on the rollers for the best finish and effectiveness of the feeding of any material and in any working condition.
(Option for class thickening planers)



planers dimensions and technical data



		class f 520	class f 410	nova f 520
Working width	mm	520	410	520
Cutter-block diameter (standard knives)	mm/no.	120/4	120/4	120/4
Standard knives dimensions	mm	35 x 3 x 520	35 x 3 x 410	35 x 3 x 520
Maximum stock removal	mm	8	8	8
Total length of surface tables	mm	2750	2610	2750
Thickening table dimensions	mm	-	-	-
Feed speed on thickener	m/min	-	-	-
Min. ÷ max. working height on thickener	mm	-	-	-
other technical features				
Three-phase motors 5 kW (6,6 hp) 50 Hz - 6 kW (8 hp) 60 Hz		S	S	S
Three-phase motors 7 kW (9,5 hp) 50 Hz - 8 kW (11 hp) 60 Hz		O	O	O
Three-phase motors 9 kW (12 hp) 50 Hz - 11 kW (15 hp) 60 Hz		-	-	-
Exhaust hood diameter	mm	120	120	120

S Standard
O Option

		class f 520	class f 410	nova f 520	nova f 410	class s 630	class s 520	nova s 630	nova s 520	nova fs 520	nova fs 410
A	mm	2750	2610	2750	2610	-	-	-	-	-	-
B	mm	1416	1155	1415	1150	-	-	-	-	-	-
C	mm	-	-	-	-	1280	1130	1275	1140	-	-
D	mm	-	-	-	-	1095	1017	1080	1003	-	-
E	mm	-	-	-	-	-	-	-	-	2250	2200
F	mm	-	-	-	-	-	-	-	-	1510	1200

nova f 410	class s 630	class s 520	nova s 630	nova s 520	nova fs 520	nova fs 410
410	630	520	630	520	520	410
120/4	120/4	120/4	120/4	120/4	120/4	95/4
35 x 3 x 410	35 x 3 x 640	35 x 3 x 520	35 x 3 x 640	35 x 3 x 520	30 x 3 x 520	30 x 3 x 410
8	8	8	8	8	5	5
2610	-	-	-	-	2250	2200
-	640 x 1000	530 x 900	640 x 1000	530 x 900	520 x 850	410 x 775
-	4 ÷ 20	4 ÷ 20	5/8/12/18	5/8/12/18	5/8/12/18	6/12
-	3,5 ÷ 300	3,5 ÷ 300	3,5 ÷ 300	3,5 ÷ 300	3,5 ÷ 240	3,5 ÷ 240
S	-	-	-	-	-	S
O	S	S	S	S	S	O
-	O	O	O	O	O	-
120	150	150	150	150	120	120

planers main optional devices

"Xylent" spiralknife cutterblock

The 3 spiralknives give an exceptional finish. **Reduced noise** during machining provides a more comfortable working environment. It also improves the dust extraction due to the **production of very small chips**. Each cutter has 4 tips which can be rotated into the cutting position when worn. Therefore increasing the production life of the cutter block **before knives** require replacement.



Maintenance case for "Xylent" spiralknife

Complete with:

- 1 cleaning/degreasing liquid bottle for the resins cleaning
- 1 set dynamometric key
- 2 bit Torx
- 10 inserts
- 5 screws
- 1 brass bristle brush to clean the spindle with mounted in inserts
- 1 steel bristle brush to clean the inserts housings



Additional overturning fence

Integrated in the surface fence, it ensures perfect operator safety when machining small dimensioned work pieces.



"Tersa" monoblock cutterblock

The cutter block is made from a single block of steel ensuring complete stability even under heavy dynamic loads. Automatic knives clamping by means of the centrifugal force ensures safe and precise machining. The system, without fixing screws, makes knives substitution extremely fast.

"Smart Lifter" integrated protection

The protection system, **developed by SCM**, is perfectly integrated into the machine base for **maximum protection** while excluding any hindrance or obstruction in the work. The protection with automatic vertical, horizontal and tilted movements **provides complete coverage of the tool** before, during and after machining.





Cast-iron mortiser

Drilling holes and mortises are easily carried out. Complete with exhaust hood, 120 mm diameter and 16 mm chuck.

Outfeed rollers in sandblasted steel

For a perfect post-processing finish.



Special rollers

The sectioned steel roller (a) and the dual-density rubber roller (b) allow the simultaneous processing of different thicknesses giving great results even with minimum removal. With the dual-density rubber roller, the edges are not damaged even when the work pieces are not perfectly aligned. Suitable also for upgraded woods and/or thin thicknesses.



a



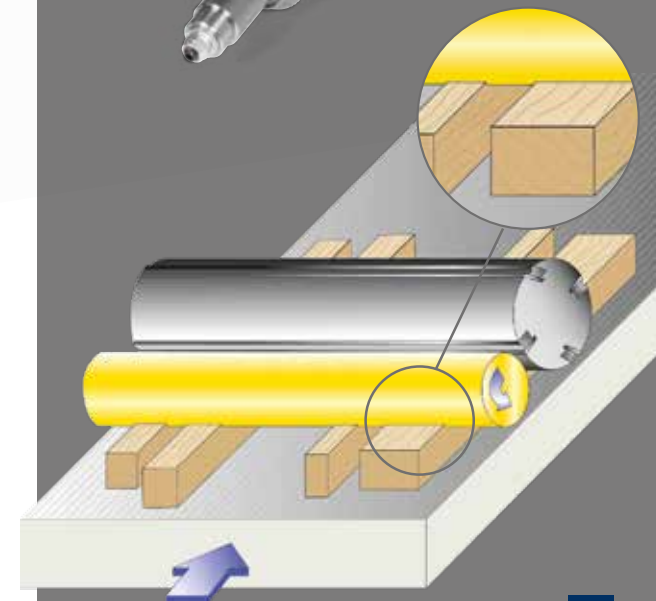
Work table extension

A single operator can easily move very long panels or introduce a second one without going to the outside to stop the first one.



Thickening table with idle rollers

It enables the feeding of moist and/or resinous wood. Particularly suitable for heavy duty woodworking operations and with rough work pieces.



b

S Standard
O Option

[illegible]





SERVICE

SCM provides a service that goes beyond the purchase, to guarantee the long term performance of your technological production system and peace of mind for your business.

A COMPLETE RANGE OF AFTER-SALES SERVICES

- installation and start-up of machines, cells, lines and systems
- tailored training programs
- telephone support to reduce times and costs when machines are not working
- preventive maintenance programs to guarantee long term performance
- complete renovation of machines and plants to renew the added value of the investments
- custom upgrading to update machines and plants and meet new production requirements



SPARE PARTS

SCM Group can count on 140 spare parts professionals worldwide to meet any request with real time shipments.



36,000 SPARE PARTS

Our spare parts inventory, with a value of 12 million euros, covers every single machine



SPARE PARTS GUARANTEED

We guarantee also hard to find parts, with 3,5 million euros invested in "critical" spare parts.



IMMEDIATE AVAILABILITY

Over 90% of orders received are carried out the same day thanks to the huge inventory available.



6 BRANCHES AROUND THE WORLD

The spare parts service can count on worldwide support (Rimini, Singapore, Shenzhen, Moscow, Atlanta, São Bento do Sul)



500 SHIPMENTS A DAY





THE STRONGEST WOOD TECHNOLOGIES ARE IN OUR DNA

SCM. A HERITAGE OF SKILLS IN A UNIQUE BRAND

Over 65 years of success gives SCM the centre stage in woodworking technology. This heritage results from bringing together the best know-how in machining and systems for wood-based manufacturing. SCM is present all over the world, brought to you by the widest distribution network in the industry.

65 years history

3 main production sites in Italy

300.000 square metres of production space

17.000 machines manufactured per year

90% export

20 foreign branches

350 agents and dealers

500 support technicians

500 registered patents

In SCM's DNA also strength and solidity of a great Group. The SCM Group is a world leader, manufacturing industrial equipment and components for machining the widest range of materials.

SCM GROUP, A HIGHLY SKILLED TEAM EXPERT IN INDUSTRIAL MACHINES AND COMPONENTS

INDUSTRIAL MACHINERY

Stand-alone machines, integrated systems and services dedicated to processing a wide range of materials.



WOODWORKING
TECHNOLOGIES



TECHNOLOGIES FOR PROCESSING
COMPOSITE MATERIALS, ALUMINIUM,
PLASTIC, GLASS, STONE, METAL

INDUSTRIAL COMPONENTS

Technological components for the Group's machines and systems, for those of third-parties and the machinery industry.



SPINDLES AND TECHNOLOGICAL
COMPONENTS



ELECTRIC PANELS



METALWORK



CAST IRON







SCM GROUP SPA

via Casale 450 - 47826 Villa Verucchio, Rimini - Italy
tel. +39 0541 674111 - fax +39 0541 674274
scm@scmgroup.com
www.scmwood.com



00L0440397E